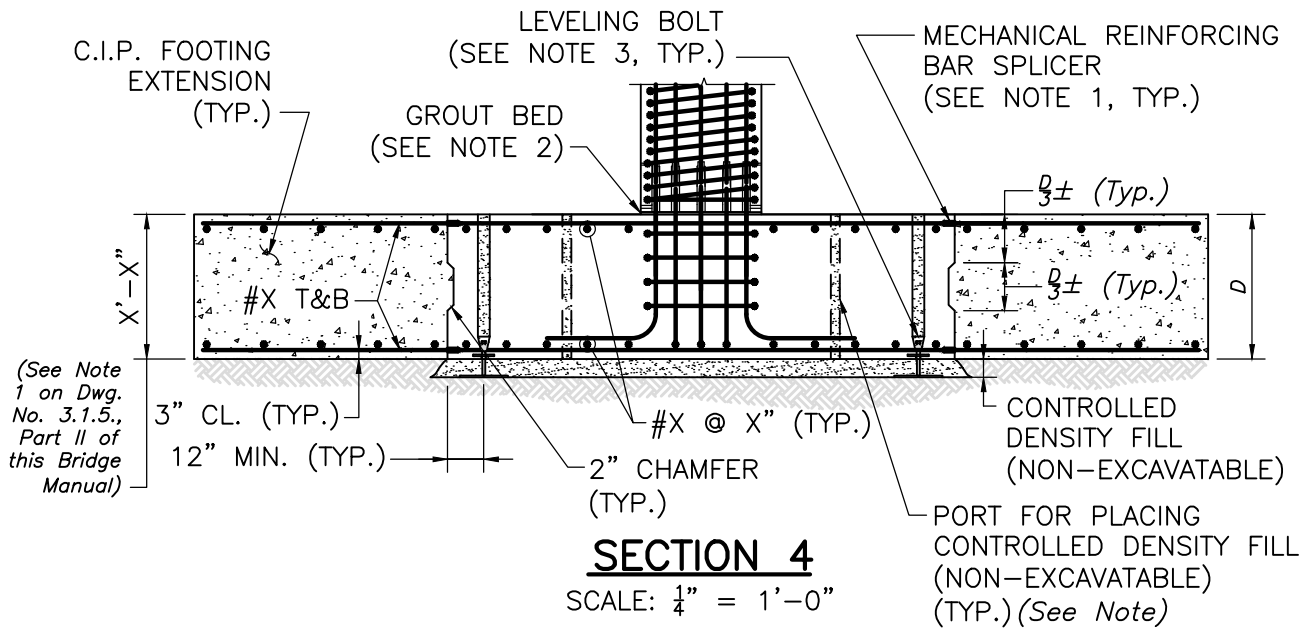


NOTE:
REINFORCEMENT NOT SHOWN FOR CLARITY.

PRECAST SPREAD FOOTING – PLAN

SCALE: $\frac{1}{4}'' = 1'-0''$



PRECAST FOOTING NOTES:

1. MECHANICAL REINFORCING BAR SPLICERS MAY BE SUBSTITUTED WITH LAP SPLICES.
2. PRE-BED SEAT WITH NON-SHRINK GROUT WITH THICKNESS SLIGHTLY MORE THAN SHIM STACK.
3. LEVELING BOLTS SHOWN. CONTRACTOR MAY USE OTHER MEANS OF SETTING GRADE.
4. SPACE PORTS FOR CONTROLLED DENSITY FILL (NON-EXCAVATABLE) AT APPROXIMATELY 4'-0" ON CENTER.

NOTE:

For large footings, consider details on Dwg. No. 4.1.10.



LRFD BRIDGE

MANUAL, PART III

PRECAST SPREAD FOOTING PLAN AND SECTION

PRECAST PIERS

DATE OF ISSUE
JUNE 2013

DRAWING NUMBER

4.1.7