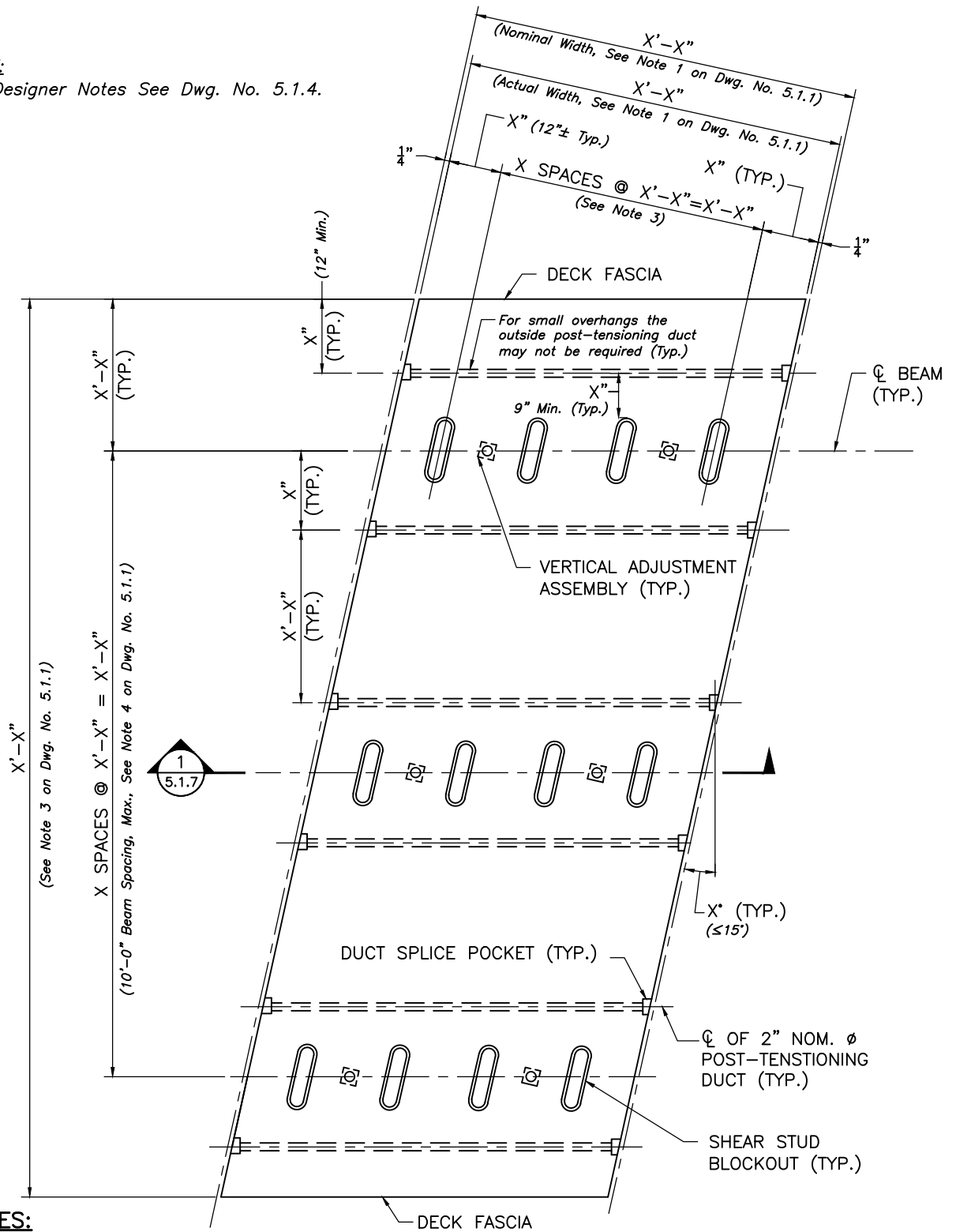


NOTE:
For Designer Notes See Dwg. No. 5.1.4.



NOTES:

- FABRICATOR SHALL DESIGN THE LIFTING DEVICES AND SHALL DETERMINE THEIR REQUIRED NUMBER AND LOCATIONS, WHICH SHALL BE PROVIDED ON THE SHOP DRAWINGS. DESIGN CALCULATIONS OF THE LIFTING DEVICES WITH ALL SUPPORTING DESIGN INFORMATION (CHARTS, TABLES, ETC.) SHALL BE SUBMITTED TO THE ENGINEER FOR APPROVAL.
- A MINIMUM OF 2 VERTICAL ADJUSTMENT ASSEMBLIES ARE REQUIRED AT CENTERLINE OF EACH BEAM.

TYPICAL PRECAST PANEL

SCALE: $\frac{1}{2}'' = 1'-0''$



LRFD BRIDGE

MANUAL, PART III

TYPICAL PRECAST PANEL
(SKEW $\leq 15^\circ$)
PRECAST CONCRETE DECK PANELS

DATE OF ISSUE
JUNE 2013

DRAWING NUMBER

5.1.5