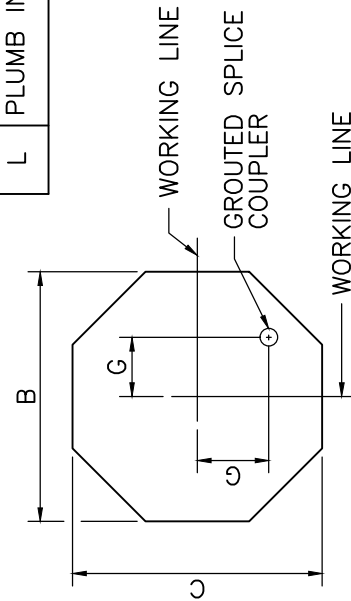
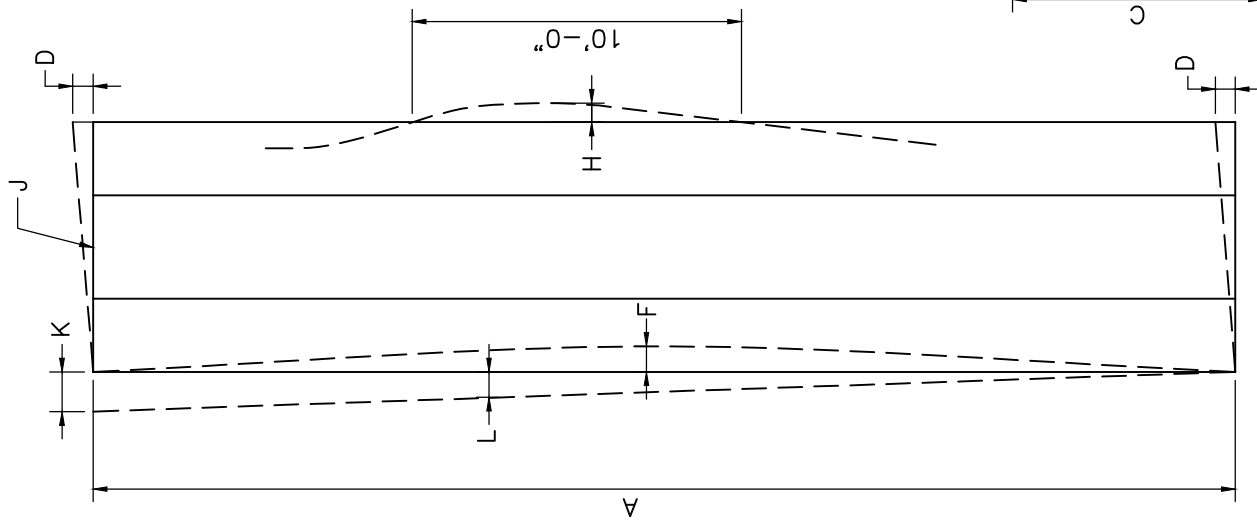


COLUMN FABRICATION TOLERANCES

A	LENGTH (OVERALL)	$\pm \frac{1}{2}$ "
B	WIDTH (OVERALL)	$\pm \frac{1}{4}$ "
C	DEPTH (OVERALL)	$\pm \frac{1}{4}$ "
D	VARIATION FROM SPECIFIED END SQUARENESS OR SKEW	$\pm \frac{1}{8}$ " PER 12 INCH WIDTH $\pm \frac{3}{8}$ " MAXIMUM
F	SWEEP FOR MEMBER LENGTH	$\pm \frac{1}{8}$ " PER 10 FEET $\pm \frac{1}{2}$ " MAXIMUM
G	LOCATION OF GROUTED SPLICE COUPLER MEASURED FROM A WORKING LINE	$\pm \frac{1}{4}$ "
H	LOCAL SMOOTHNESS OF ANY SURFACE	$\pm \frac{1}{4}$ " IN 10 FEET

COLUMN ELEVATION ERECTION TOLERANCES

J	TOP ELEVATION FROM NOMINAL TOP ELEVATION	$\pm \frac{1}{4}$ "
K	MAXIMUM PLUMB VARIATION OVER LENGTH OF COLUMN	$\pm \frac{1}{2}$ "
L	PLUMB IN ANY 10 FEET OF COLUMN LENGTH	$\pm \frac{1}{4}$ "



ELEVATION
NOT TO SCALE

SECTION
NOT TO SCALE



LRFD BRIDGE

MANUAL, PART III

COLUMN FABRICATION AND ERECTION TOLERANCES

PRECAST TOLERANCES

DATE OF ISSUE
JUNE 2013

DRAWING NUMBER

6.1.3