

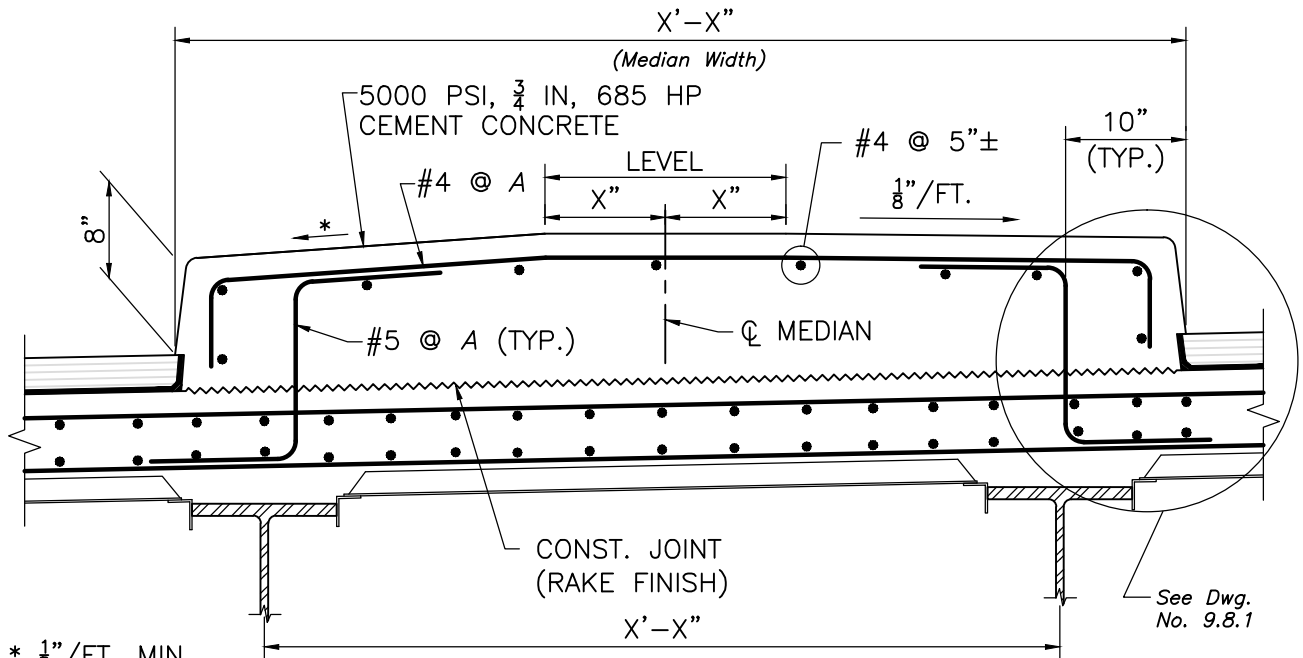
NOTES:

1. Bearings shall be designed to provide for transverse movement.
2. Dimension X" is equal to the Amount of Thermal Expansion + 1".

* 1"/8 FT. MIN., SLOPE TO SUIT

WITH LONGITUDINAL JOINT

(To be used only where total width of bridge exceeds 72'±)



* 1"/8 FT. MIN., SLOPE TO SUIT

See Dwg. No. 9.8.1

WITHOUT LONGITUDINAL JOINT

MEDIAN DETAILS

SCALE: 1" = 1'-0"

NOTES:

1. A = same spacing as deck slab reinforcement.
2. If a median rail or barrier is required, consult Director of Bridges and Structures for appropriate Crash Tested System. Omit level surface on bridges without median rail or barrier.
3. Details for separated precast beams are similar.



LRFD BRIDGE
MANUAL, PART II

MEDIAN DETAILS WITH
APPROACH CURB
GENERAL DECK DETAILS

DATE OF ISSUE
JUNE 2013

DRAWING NUMBER

7.1.14