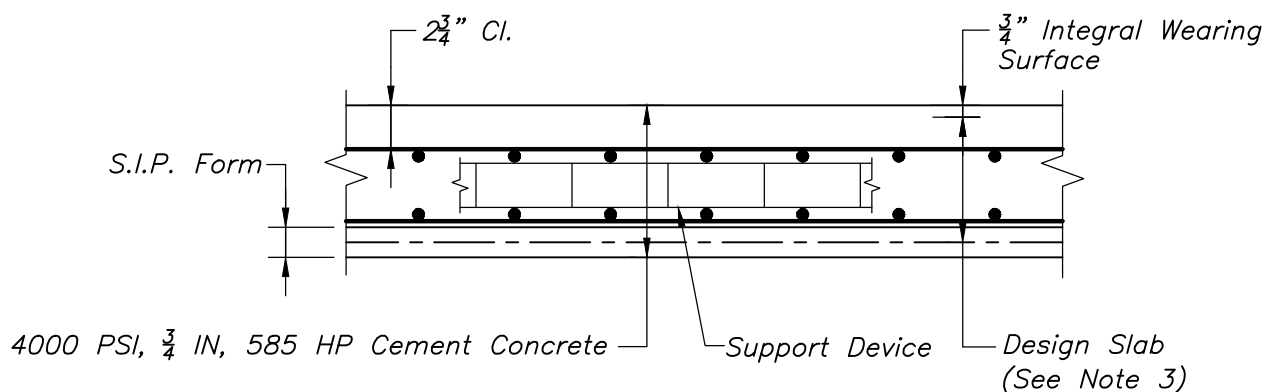


HOT MIX ASPHALT (HMA) WEARING SURFACE



EXPOSED DECK

NOTES:

1. HMA wearing surface shall be placed on all bridges when the profile slope on the bridge is less than or equal to 4%.
2. When the profile slope on the bridge is greater than 4% or when special conditions may warrant the Designer shall select exposed deck option.
3. For curved girders, the form valleys will be filled with expanded polystyrene (EPS) and the bottom of the design slab will be at the peaks of the forms.



LRFD BRIDGE
MANUAL, PART II

BRIDGE DECK WEARING SURFACES

GENERAL DECK DETAILS

DATE OF ISSUE
JUNE 2013

DRAWING NUMBER

7.1.18