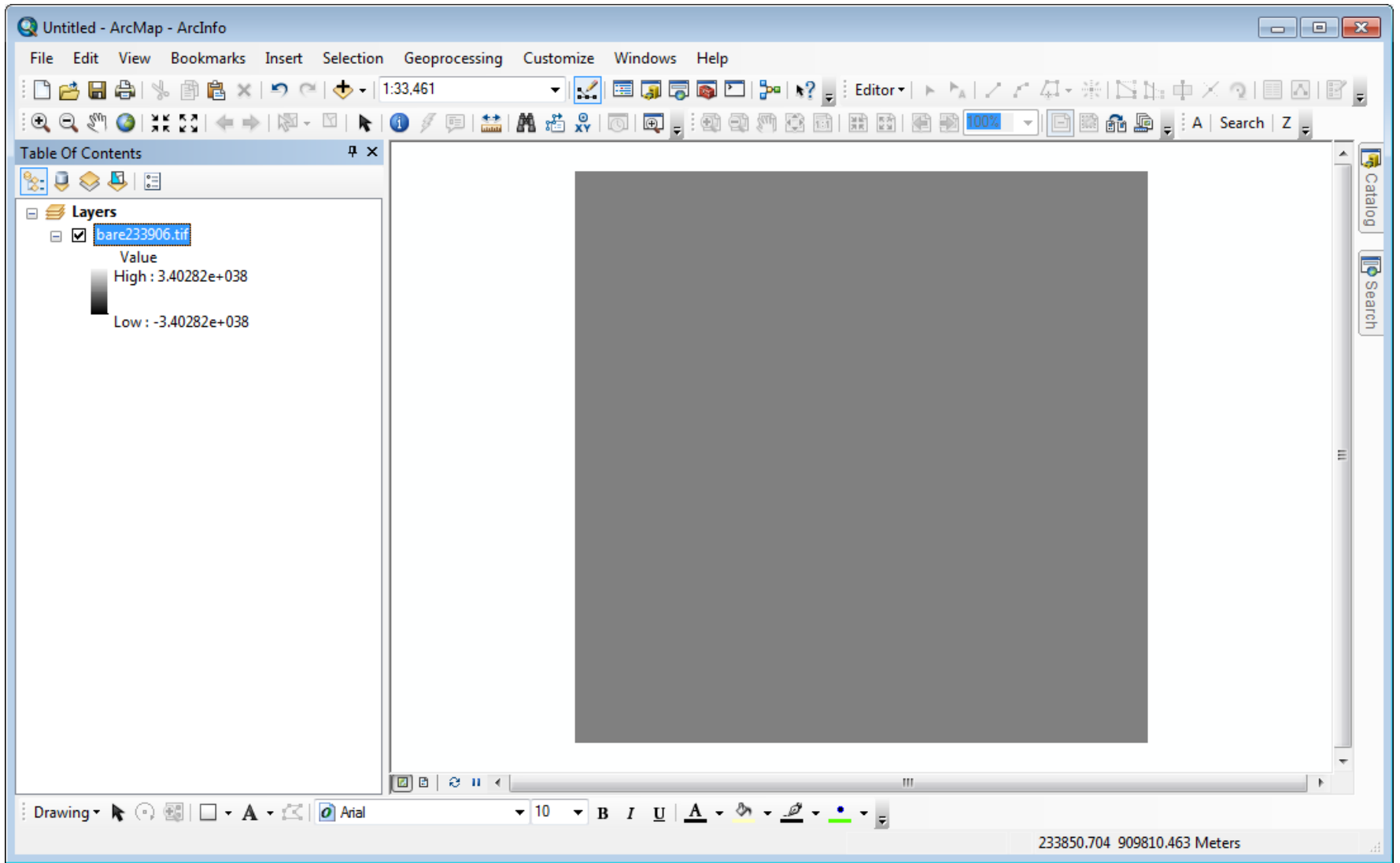
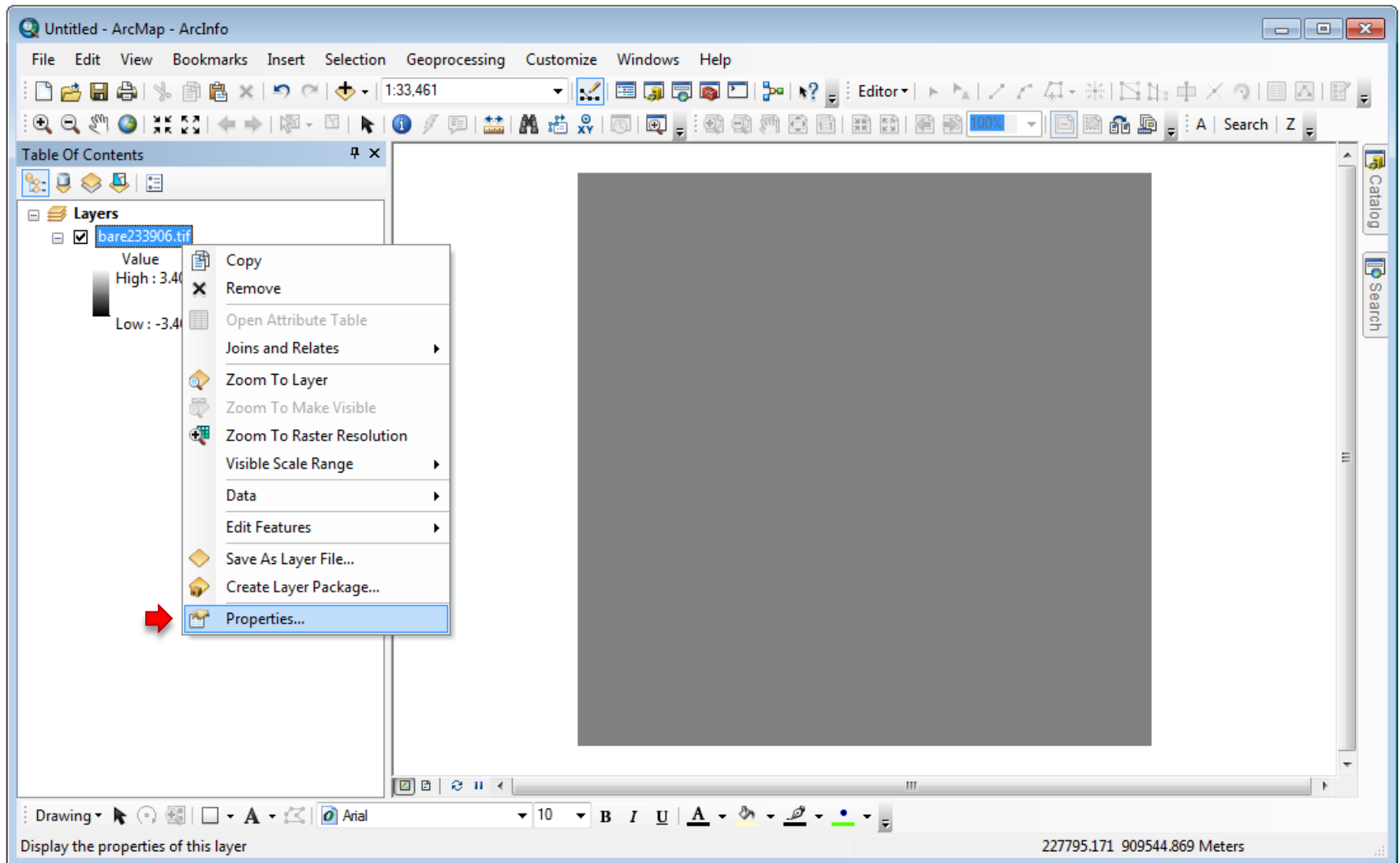


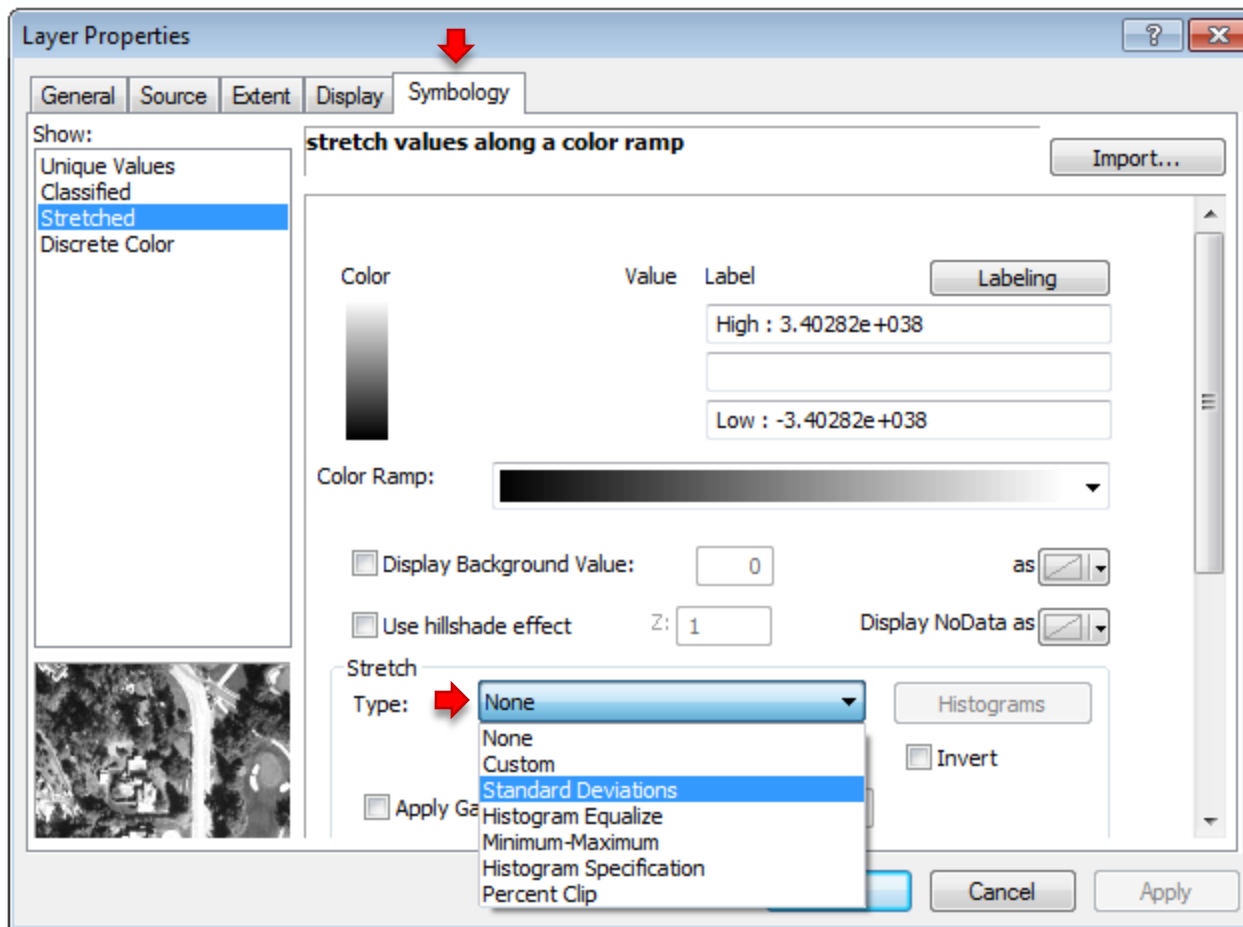
How to Stretch LiDAR GeoTiff DEMs Downloaded from MassGIS in ArcMap

The image does not contain statistics, so it will appear a single shade of gray.



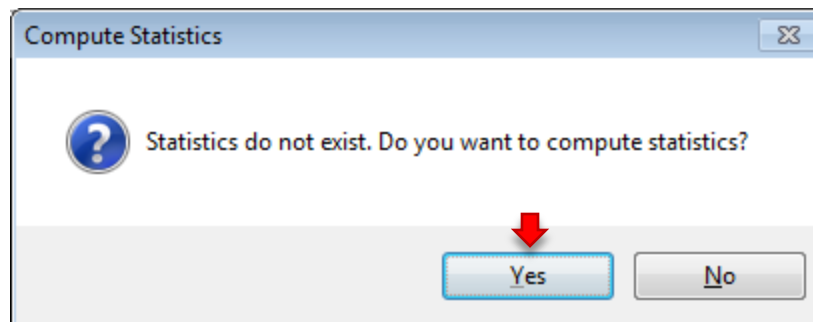
Right-click the image in the Table of Contents and choose **Properties**

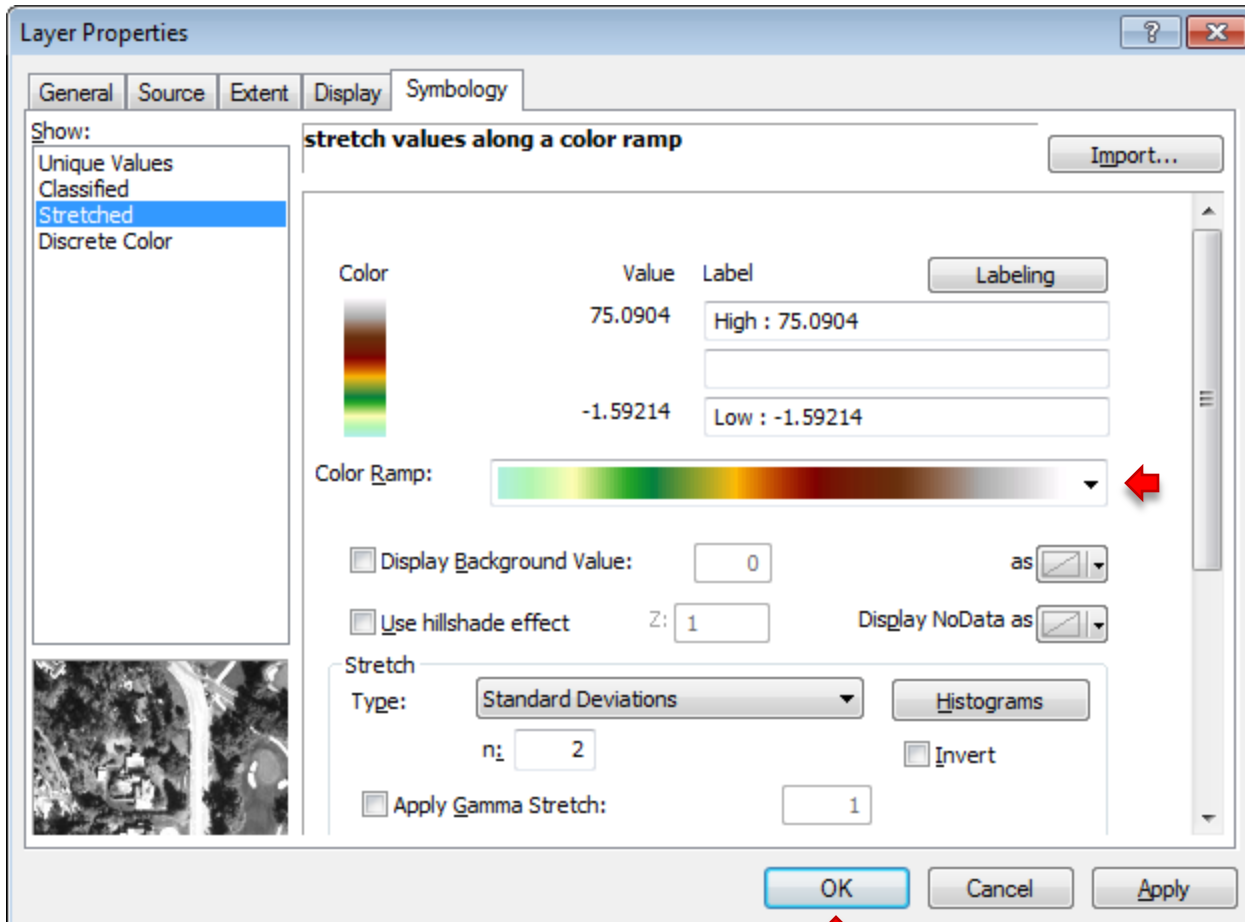




In the **Symbology** tab click the **Stretch Type dropdown** and choose a method.

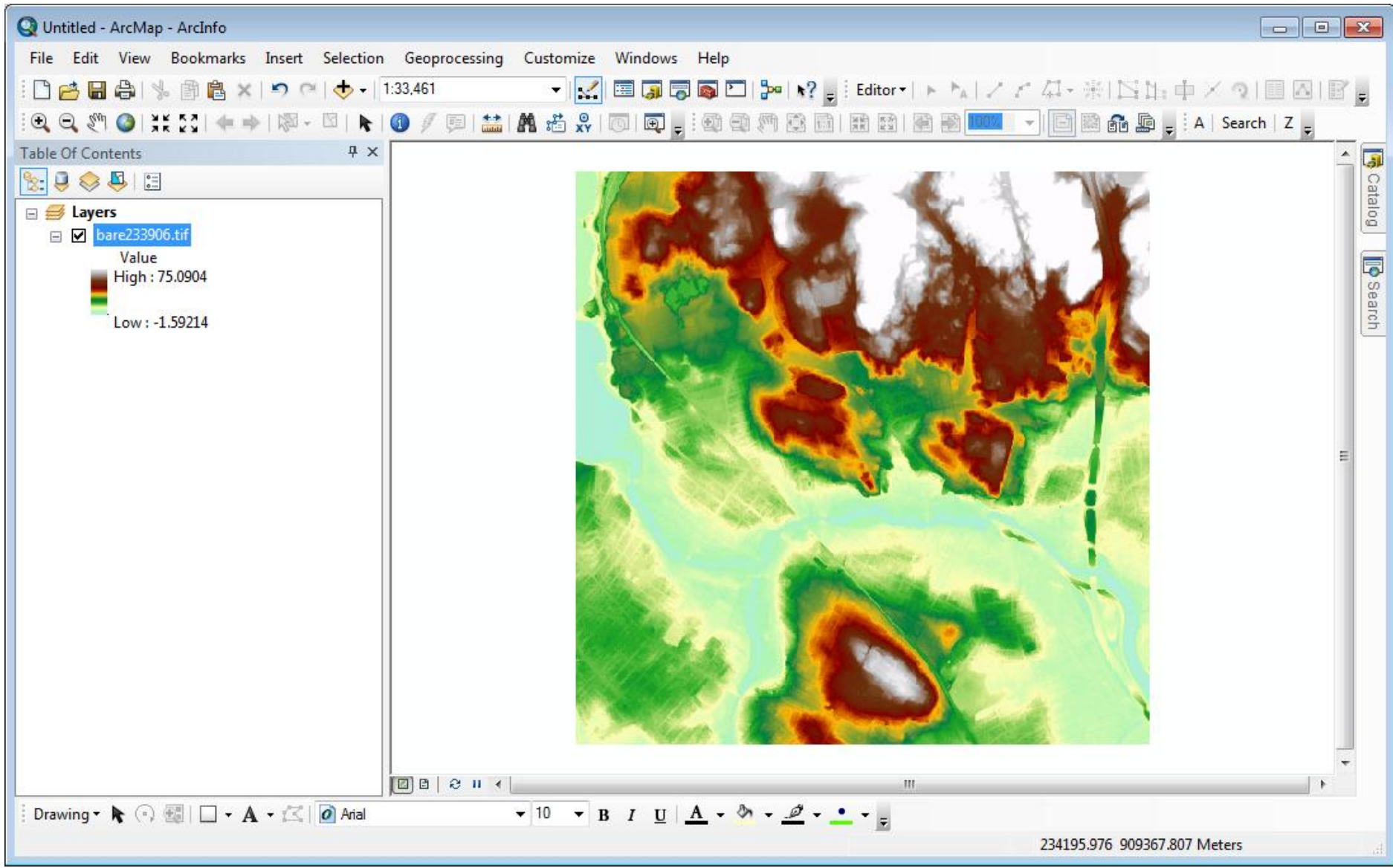
The Compute Statistics message box will appear. Click **Yes**.





Select a Color Ramp
if desired.

Click **OK**.



The image will then display properly.