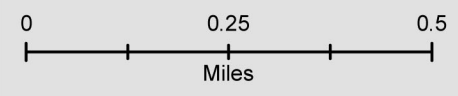


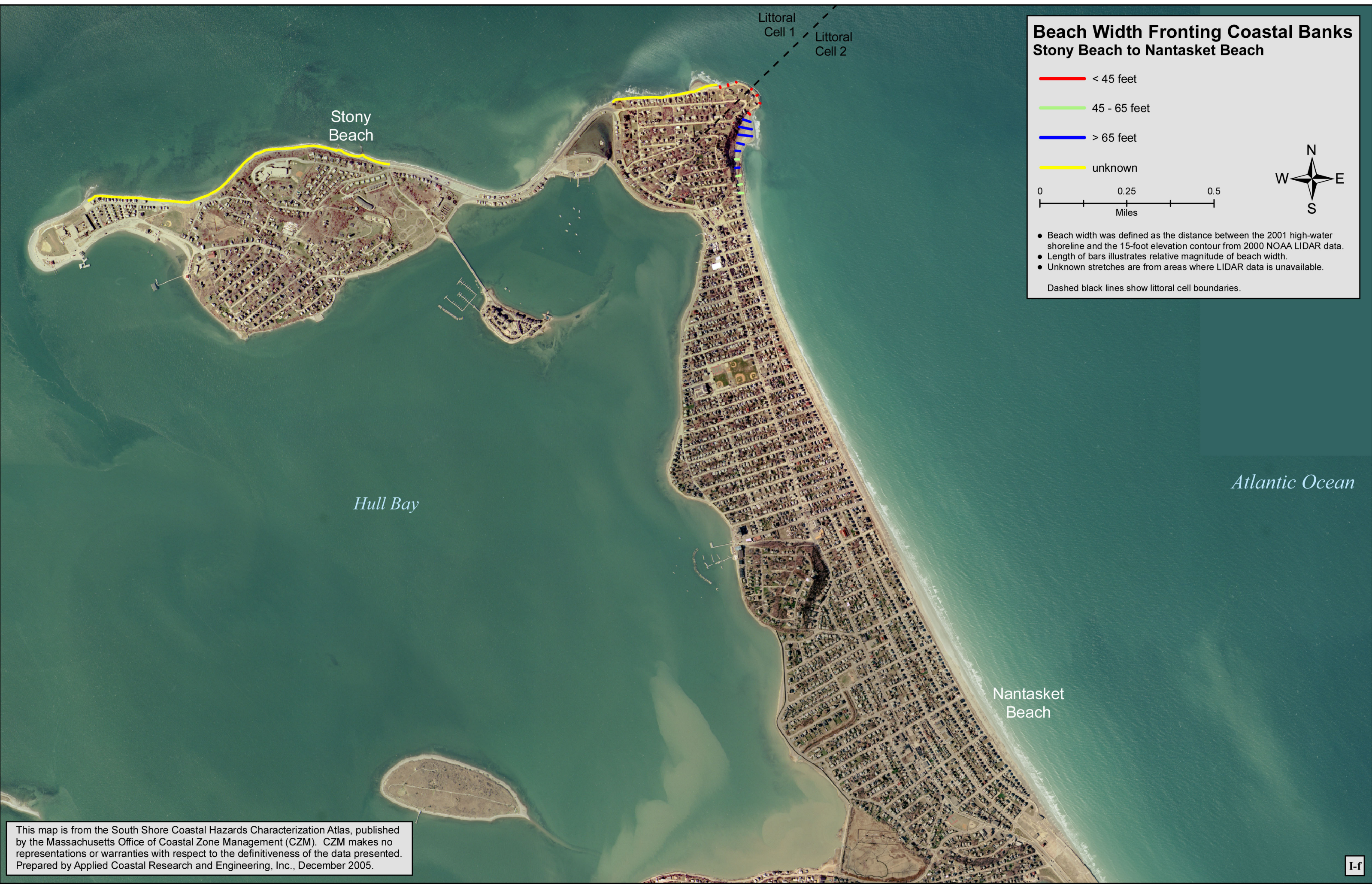
Beach Width Fronting Coastal Banks Stony Beach to Nantasket Beach

- < 45 feet
- 45 - 65 feet
- > 65 feet
- unknown



- Beach width was defined as the distance between the 2001 high-water shoreline and the 15-foot elevation contour from 2000 NOAA LIDAR data.
- Length of bars illustrates relative magnitude of beach width.
- Unknown stretches are from areas where LIDAR data is unavailable.

Dashed black lines show littoral cell boundaries.



Stony Beach

Littoral Cell 1

Littoral Cell 2

Hull Bay

Atlantic Ocean

Nantasket Beach

This map is from the South Shore Coastal Hazards Characterization Atlas, published by the Massachusetts Office of Coastal Zone Management (CZM). CZM makes no representations or warranties with respect to the definitiveness of the data presented. Prepared by Applied Coastal Research and Engineering, Inc., December 2005.