

Welcome to the Quincy Quarries Historic Site



The 22 acres surrounding Granite Railway Quarry create the centerpiece of this DCR historic site. In addition, the Department of Conservation and Recreation manage an adjoining 90 acres of quarry remains and historic resources preserved by the Commonwealth. The DCR Quincy Quarries Historic Site is adjacent to the scenic Blue Hills Reservation comprising the largest open space within 35 miles of Boston.

Taken for Granite

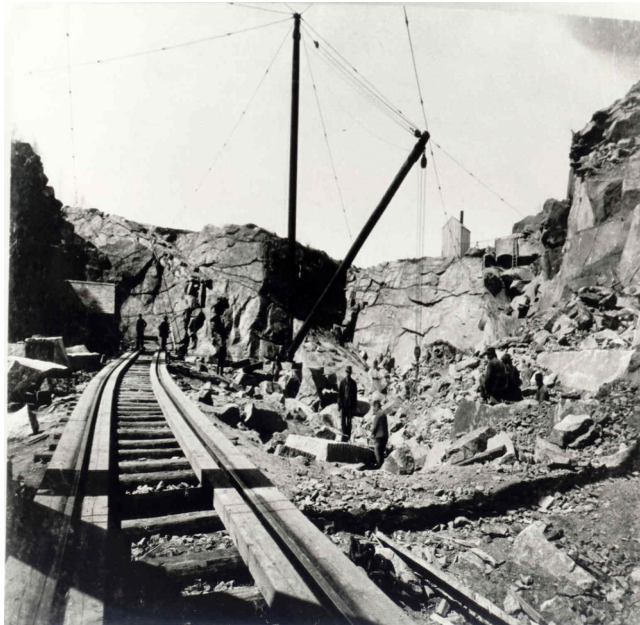
America's large scale granite quarrying industry was born in 1825 when, after an exhaustive search throughout New England, Solomon Willard selected West Quincy as the source of stone for the Bunker Hill Monument in Charlestown. Here, Mr. Willard earned the title, "Father of the Granite Industry", with his development of the revolutionary construction techniques that made hard Quincy granite a practical building stone.

To carry stone from the quarries, the Granite Railway was established in 1826. The Railway, a National Historic Civil Engineering Landmark, was a pioneer in the American railroad industry. Gridley Bryant engineered its design and construction, and many of his inventions are still in use today.

During the next 140 years, over fifty quarries operated in Quincy, which became known nationwide as "The Granite City". Quincy granite was valued for its extreme hardness, dark color and ability to take a high polish. Quincy granite was used in the construction of some of the most impressive granite buildings, monuments, sculptures and fortifications across the nation, including customs houses in Boston, Savannah, New Orleans and San Francisco. The last active quarry closed in 1963.

Granite Railway Quarry: Then and Now

In 1985 the Commonwealth of Massachusetts purchased 22 acres that include Granite Railway Quarry. Opened in 1830, this historic quarry was initially known as Pine Hill Ledge and granite from here was used to finish the Bunker Hill Monument. Granite Railway was actively quarried until the early 1940's. Since that time the quarry began to fill with water which seeped through the horizontal cracks and fissures characteristics of granite geology. Granite Railway and the quarries of West Quincy became famous, or infamous for swimming and diving. In 1999, it was decided that the near 300 foot depths of the Granite Railway Quarry posed a public safety threat and the quarry was drained and filled. The newly landscaped Granite Railway Quarry was reopened to the public in 2003, sparking a renewed interest in rock climbing, hiking, picnicking and scenic viewing. Today the Quincy Quarries Historic Site preserves a rich industrial landscape while providing a unique open space for recreation and discovery.



Rules and Regulations

For your safety, the following are prohibited:

- Swimming or diving
- Alcoholic beverages
- Motorized vehicles
- Dumping or littering
- Destruction, removal and injury of vegetation, animals, structures or artifacts
- Hunting, trapping and the possession of any firearms, bow and arrow or explosive devices
- Open fires

All visitors must follow the direction of Park personnel or Police. Any violation of these regulations may result in arrest and/or fine per order of MGLC 92, S.37 CMR 350 2.01

Directions

MBTA:

Red Line to Quincy Center, take MBTA bus #215 to Copeland and Willard Streets, turn left on Willard, cross under the Expressway and take the first right onto Ricciuti Drive. The Quarries are ¼ mile on the right.

By car:

From the south: Take Route 93 to Furnace brook parkway (Exit 8) follow signs to Willard Street and cross under Route 93. Take the first right onto Ricciuti Drive at Men's Warehouse and a large "Quarry Hills" sign. The Quarries are ¼ mile on the right.

From the North: Take Route 93 to Furnace Brook Parkway (Exit 8) turn right on Ricciuti Drive, between Men's Warehouse and a large "Quarry Hills" sign: The Quarries are ¼ mile on the right.

For more information contact:
DCR South Region Headquarters
695 Hillside Street
Milton, MA 02186
617-698-1802

Visit the DCR at www.mass.gov/dcr



Quincy Quarries Historic Site

Blue Hills Reservation





QUINCY QUARRIES HISTORIC SITE

LEGEND

-  Quarry
-  Filled Quarry
-  Blue Hills Reservation Boundary
-  Trail
-  Former Route of Granite Railway
-  4229 Intersection Marker
-  Parking

