

Walden Pond
Reservation Hdqtrs.

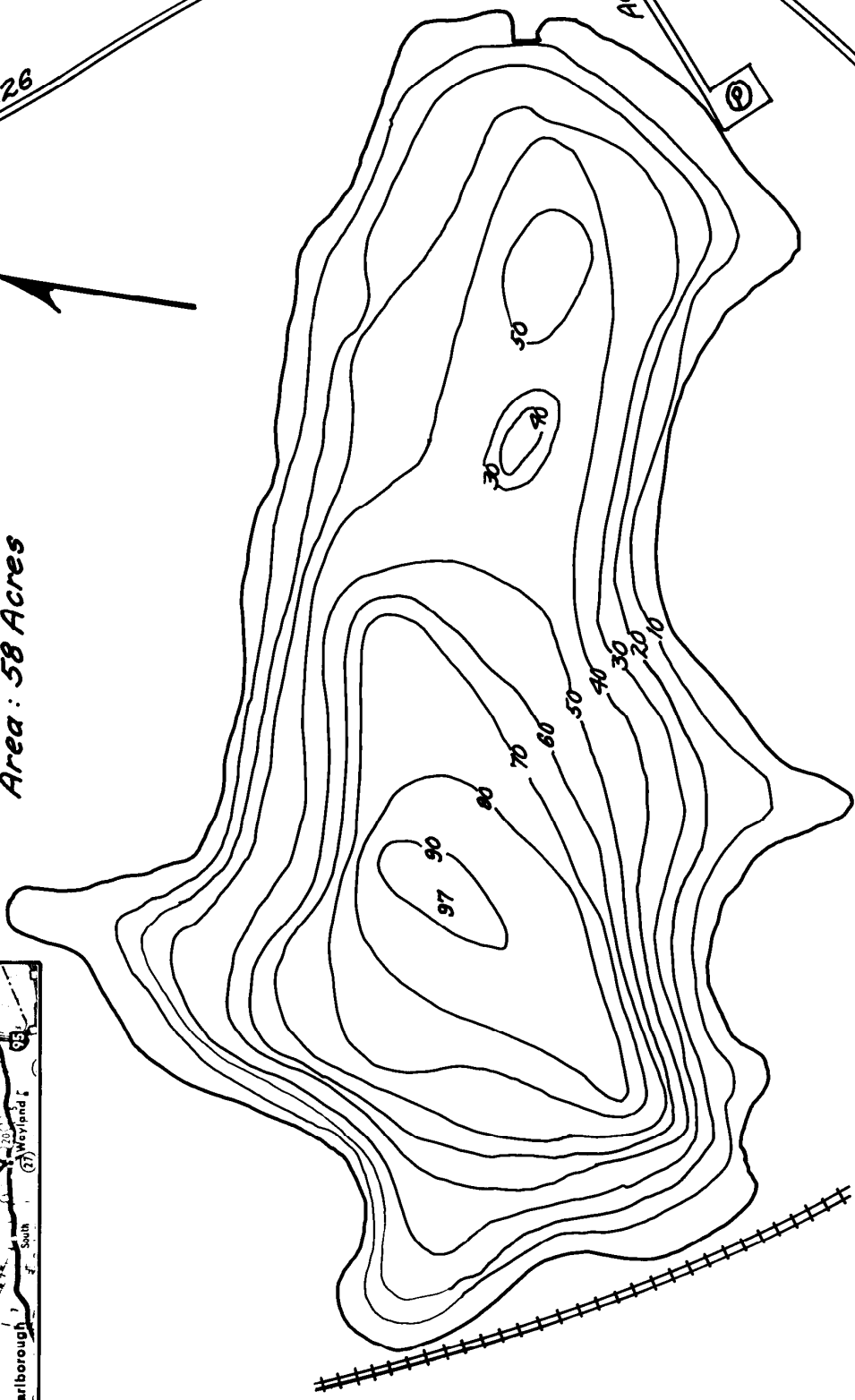
Parking

Access

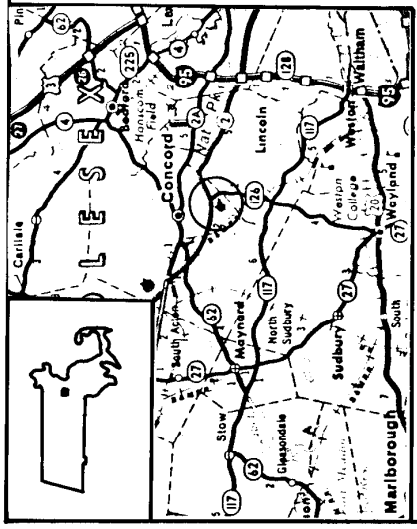
Rt. 126

Rt. 2

WALDEN POND CONCORD Area: 58 Acres



NOT TO BE USED FOR NAVIGATIONAL PURPOSES



WALDEN POND (Concord)

General Information:

This 58-acre natural great pond is located a little to the southeast of the junction of Routes 2 and 126 in Concord. Maximum depth is 97 feet; average depth is approximately 40 feet. Transparency is excellent, extending to at least 18 feet. Aquatic vegetation is negligible and confined to the few shallow cove areas. The shoreline is virtually undeveloped, and much of it falls within the Department of Environmental Management's Walden Pond Reservation.

Access is provided by an excellent gravel ramp maintained by the Division of Forests and Parks. It is located just off Route 128. There is a \$5 fee to use this ramp (seasonal passes are available) and the gate is closed every night. The parking lot can only accommodate approximately 10 vehicles with trailers, but there is a much larger parking area just across the street. **No gas-powered motors are allowed** on the pond, but electric motors are permitted. Almost the entire pond is open to shore fishing, so a boat or canoe is not a requirement to enjoy some good fishing action.

Fish Populations:

This pond supports populations of smallmouth bass, largemouth bass, pumpkinseed, bluegill, chain pickerel and brown bullhead in the limited warm water habitat. The cold water habitat supports a population of rainbow smelt, which serve as forage for the large numbers of trout that are stocked here every spring and fall.

Fishing:

The warm water fish populations in Walden Pond are too small and slow growing to offer more than an incidental attraction in terms of sport fishing action. Trout are the name of the game here, and not only recent stockies, but also holdover fish, which sometimes grow to trophy size. Over the years, this pond has produced a number of the top annual sport fishing awards in the rainbow and brown trout categories. Most trout are taken by standard still-fishing techniques on worms, small shiners, doughbaits and salmon eggs; others on cast or trolled spoons, spinners or streamers. Many of the largest trout are taken through the ice.

This pond tends to be heavily crowded during the peak stocking seasons and on winter weekends, so go on a weekday if possible. Action in the winter can be extremely slow: only one or two fish caught over the entire pond in a whole day. The few trout caught at such times are often lunkers, however, and many anglers are willing to put in the time in an attempt to catch one of these rare trophies.

April 1993