



MASSACHUSETTS DEPARTMENT OF
CONSERVATION AND RECREATION

Improving the Arborway



DCR Public Meeting

Wednesday, October 14th, 2015 - 6:30 p.m. – 8:30 p.m.
Arboretum Visitors Center, 125 Arborway, Boston



Commonwealth of Massachusetts

Governor

Charles D. Baker

Lieutenant Governor

Karyn E. Polito

Energy and Environmental Secretary

Matthew A. Beaton

Department of Conservation and Recreation Commissioner

Carol I. Sanchez



DCR Mission Statement

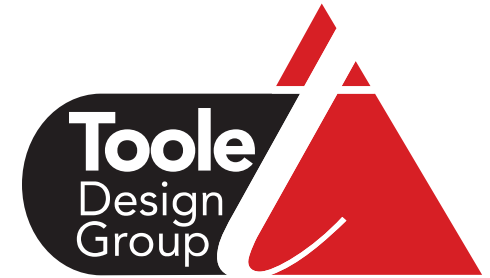
*To protect, promote and enhance our common wealth
of natural, cultural and recreational resources for
the well-being of all.*



Purpose of Meeting

- Update since previous meetings
- Present revised concept
- Present modifications in revised concept
- Present traffic analysis

Toole Design Group's Mission Statement



*Safe streets for people of all ages and
abilities*



Agenda

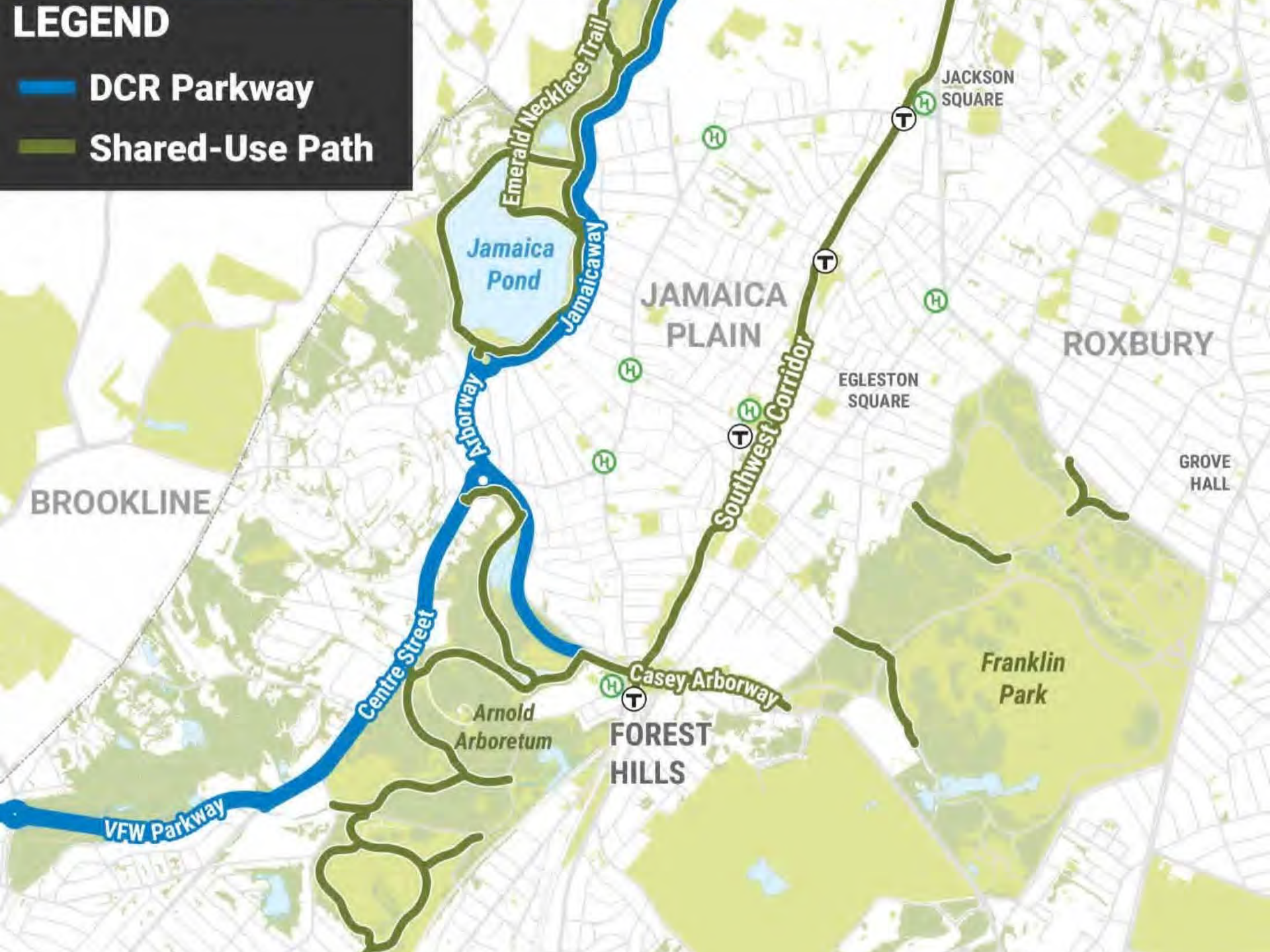
- Summary of Past Meetings
 - Stakeholder/Public Meetings
 - Starter Idea
- Comments Received
- Revised Concept
- Traffic Analysis
- Anticipated Schedule



LEGEND

 DCR Parkway

 Shared-Use Path



Improving the Arborway



What we heard

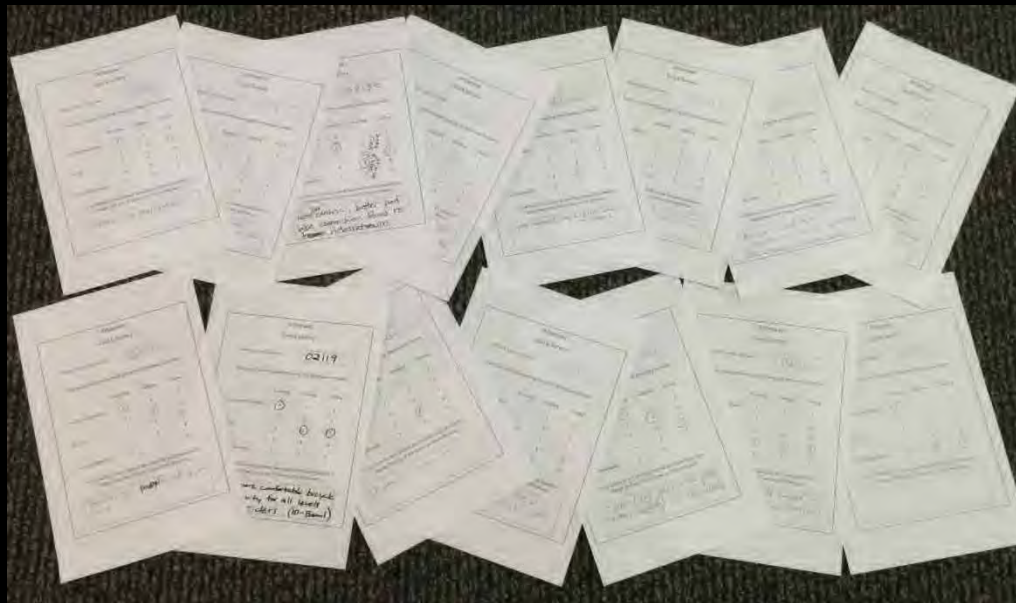


**CYCLETRACKS!
CYCLETRACKS!**



**“Speeding is a
serious concern.”**

**PROTECTED
BIKE LANE!**



“Less car centric.”

**“Design for
people not for
cars.”**

“Ability to cross traffic circles on foot or bicycle.”

- **Preserve trees**

What we heard



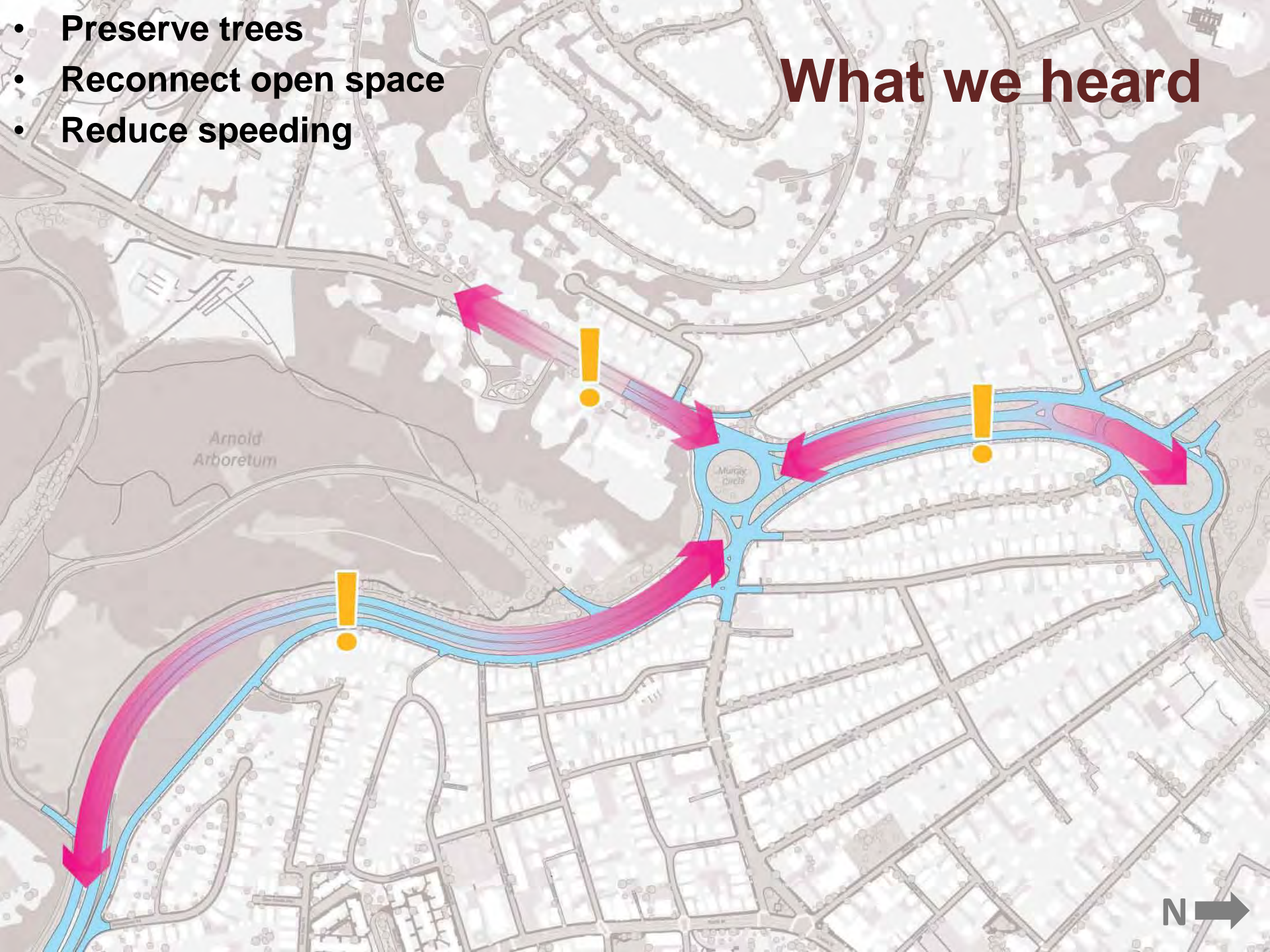
- **Preserve trees**
- **Reconnect open space**

What we heard



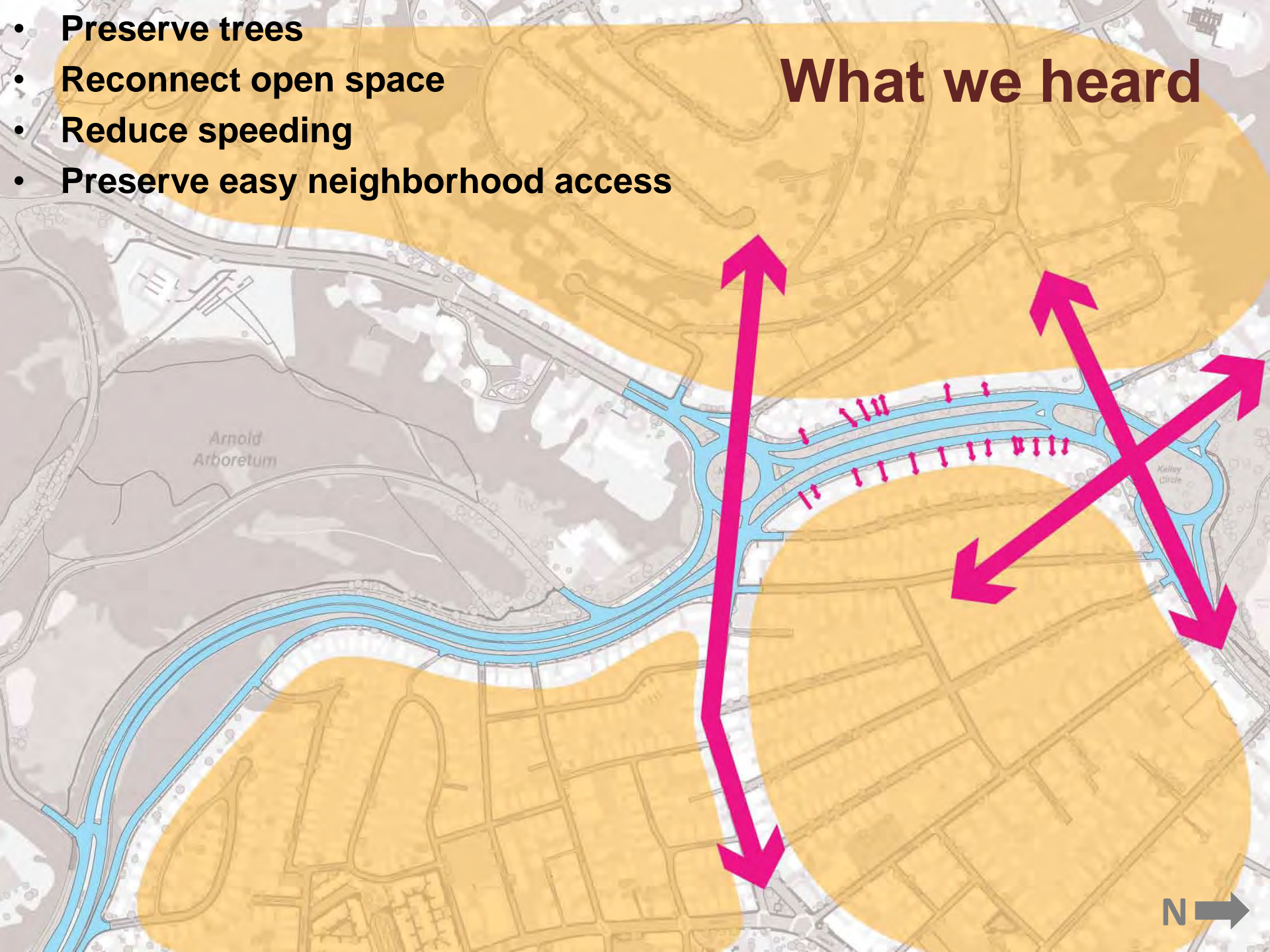
- Preserve trees
- Reconnect open space
- Reduce speeding

What we heard



- **Preserve trees**
- **Reconnect open space**
- **Reduce speeding**
- **Preserve easy neighborhood access**

What we heard



- **Preserve trees**
- **Reconnect open space**
- **Reduce speeding**
- **Preserve easy neighborhood access**
- **Make navigation easier**

What we heard



- **Preserve trees**
- **Reconnect open space**
- **Reduce speeding**
- **Preserve easy neighborhood access**
- **Make navigation easier**
- **Reduce weaving in circles**

What we heard



- **Preserve trees**
- **Reconnect open space**
- **Reduce speeding**
- **Preserve easy neighborhood access**
- **Make navigation easier**
- **Reduce weaving in circles**
- **Improve yielding at crosswalks**

What we heard



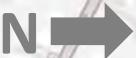
- **Preserve trees**
- **Reconnect open space**
- **Reduce speeding**
- **Preserve easy neighborhood access**
- **Make navigation easier**
- **Reduce weaving in circles**
- **Improve yielding at crosswalks**
- **Provide continuous bike connection**

What we heard



- **Preserve trees**
- **Reconnect open space**
- **Reduce speeding**
- **Preserve easy neighborhood access**
- **Make navigation easier**
- **Reduce weaving in circles**
- **Improve yielding at crosswalks**
- **Provide continuous bike connection**
- **Make carriageway comfortable for all**

What we heard



- **Preserve trees**
- **Reconnect open space**
- **Reduce speeding**
- **Preserve easy neighborhood access**
- **Make navigation easier**
- **Reduce weaving in circles**
- **Improve yielding at crosswalks**
- **Provide continuous bike connection**
- **Make carriageway comfortable for all**
- **Direct regional traffic to mainline**

What we heard



Starter Idea



Starter Idea

- Replaces traffic circles with modern roundabouts
- Reverses carriageway direction
- Removes 3 traffic signals
- New pedestrian crossing opportunities
- Continuous separated bike facilities
- Raised crossings
- Maintains neighborhood access



Starter Idea

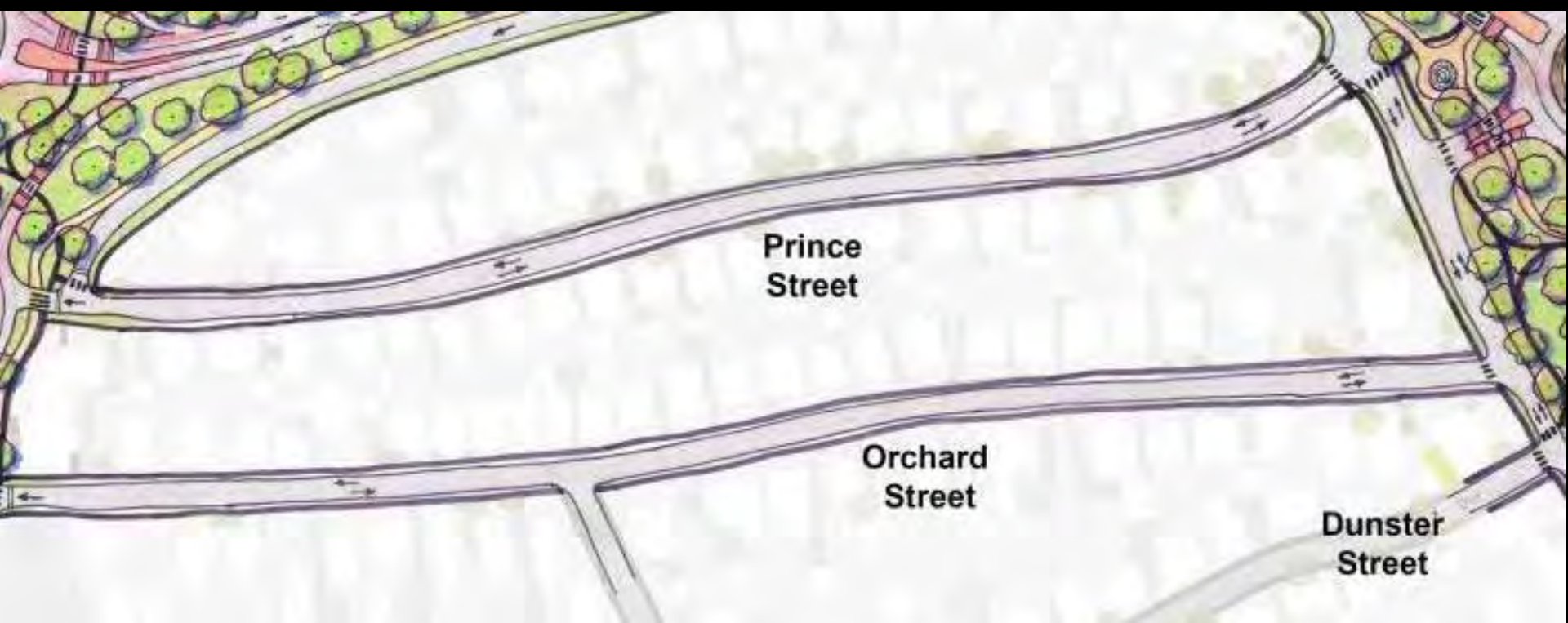
Opened Starter Idea to public comment!

Received approx. 125 comments!!



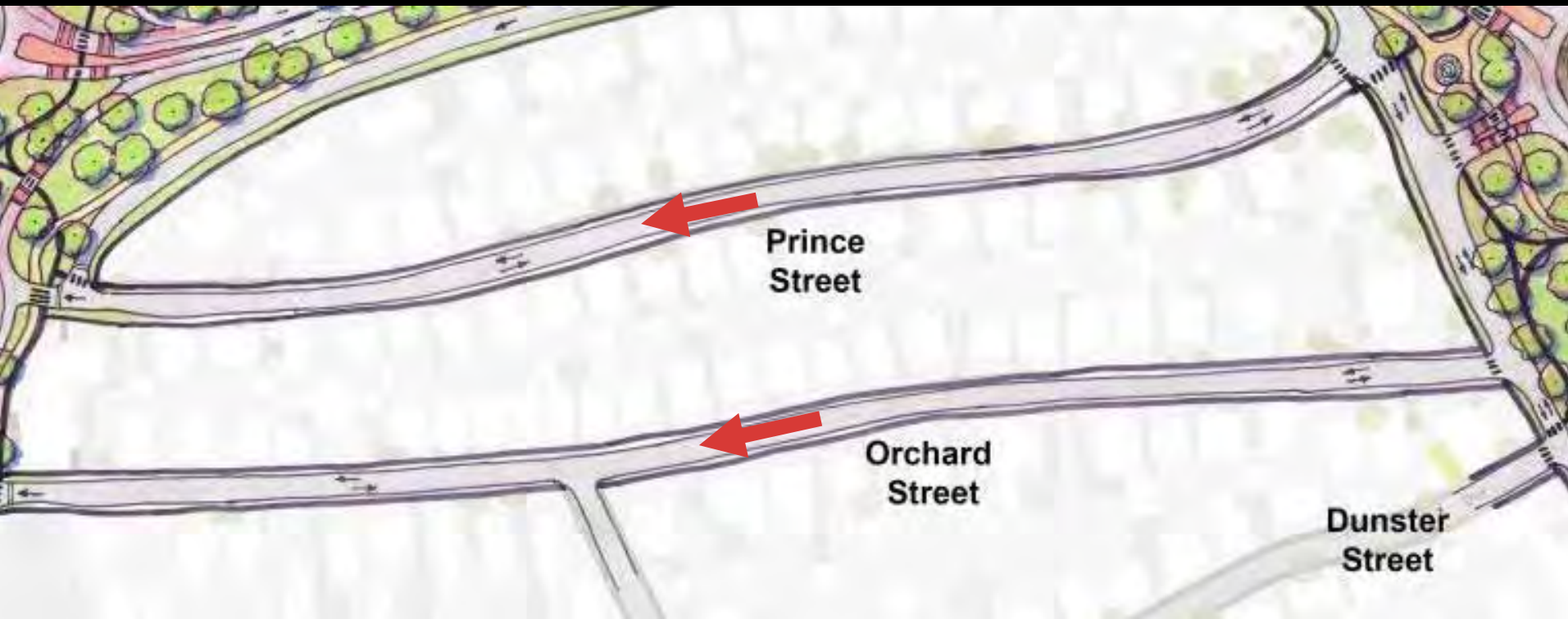
What we heard

- **Maintain Prince/Orchard as one-way streets**



What we heard

- ✓ **Maintain Prince/Orchard as one-way streets**



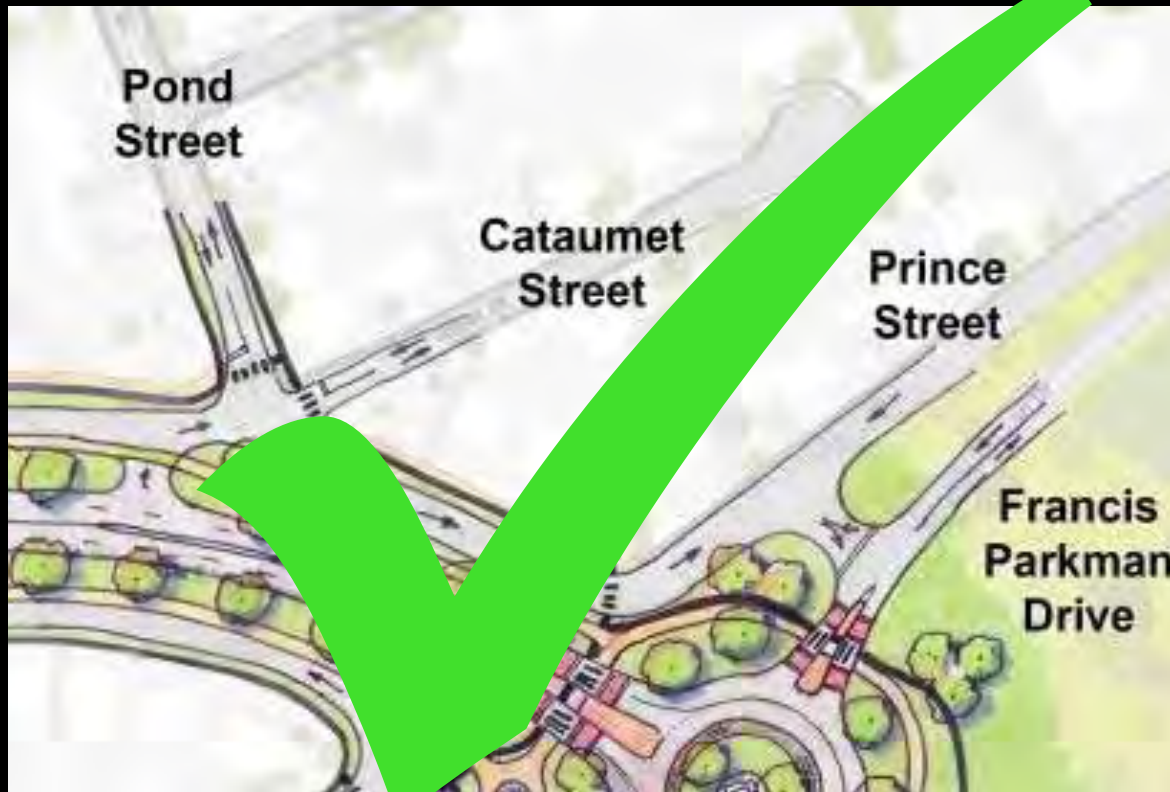
What we heard

- ✓ **Maintain Prince/Orchard as one-way streets**
- **Reevaluate Pond/Prince/Parkman connection**
- **Retain existing historic wall along Prince Street**



What we heard

- ✓ **Maintain Prince/Orchard as one-way streets**
- ✓ **Reevaluate Pond/Prince/Parkman connection**
- ✓ **Retain existing historic wall along Prince Street**



What we heard

- ✓ **Maintain Prince/Orchard as one-way streets**
- ✓ **Reevaluate Pond/Prince/Parkman connection**
- ✓ **Retain existing historic wall along Prince Street**
- **Determine tree impacts**

What we heard

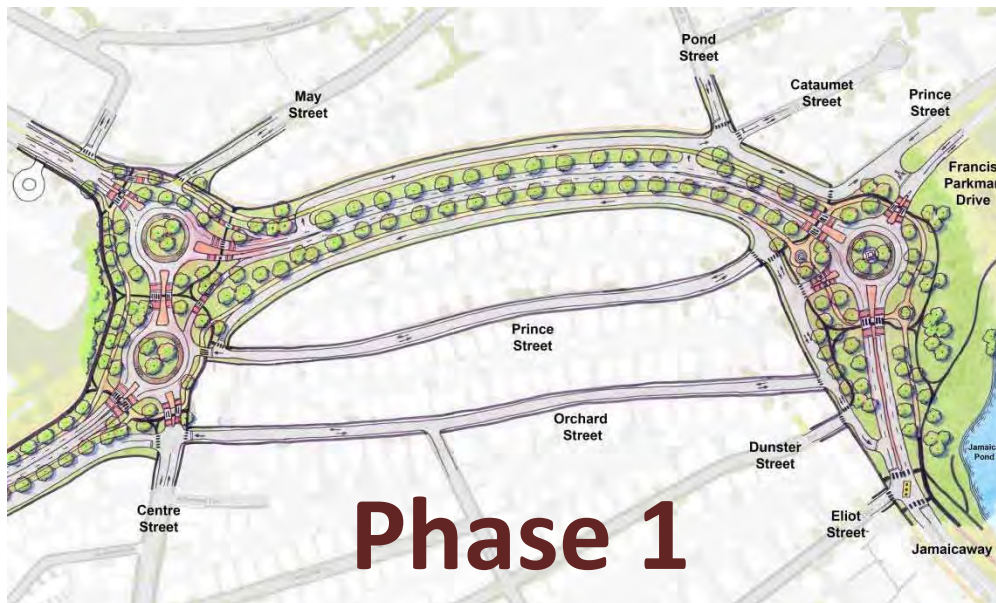
- ✓ **Maintain Prince/Orchard as one-way streets**
- ✓ **Reevaluate Pond/Prince/Parkman connection**
- ✓ **Retain existing historic wall along Prince Street**
- **Determine tree impacts**
- **Carriageways necessary to maintain traffic flow**
- **Maintain Centre Street pedestrian signal**
- **Other traffic concerns**

Phased Implementation

- Separating project into 2 phases

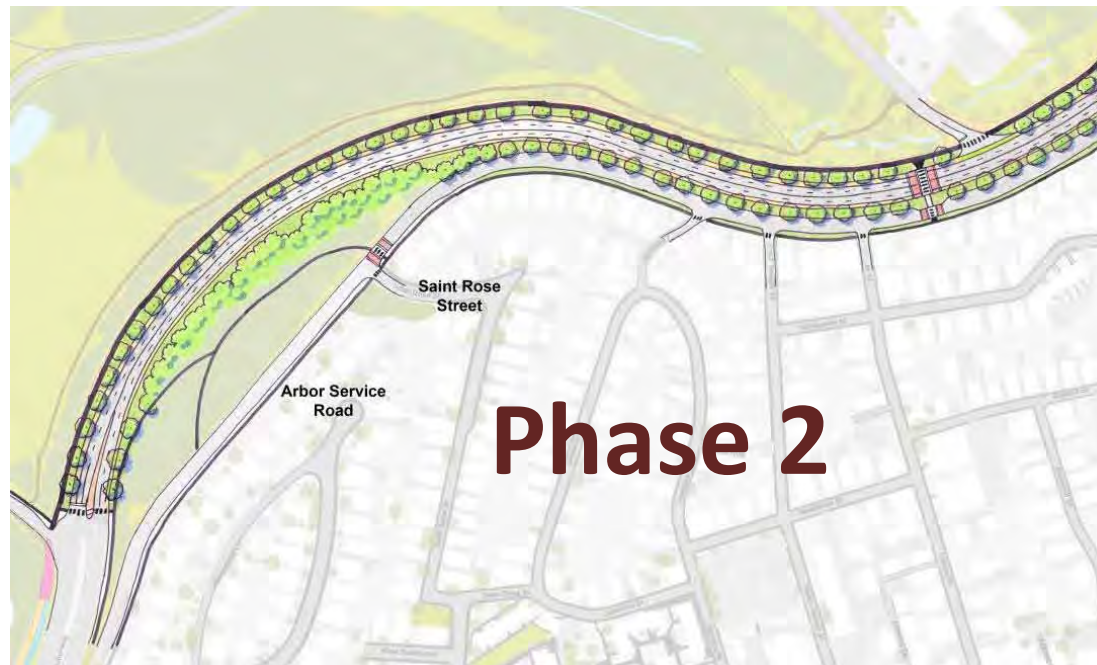
Phased Implementation

- Phase 1: Murray Circle to Kelley Circle
 - Complex traffic patterns
 - Increase comfort for pedestrians and bicyclists
 - Focus on tonight



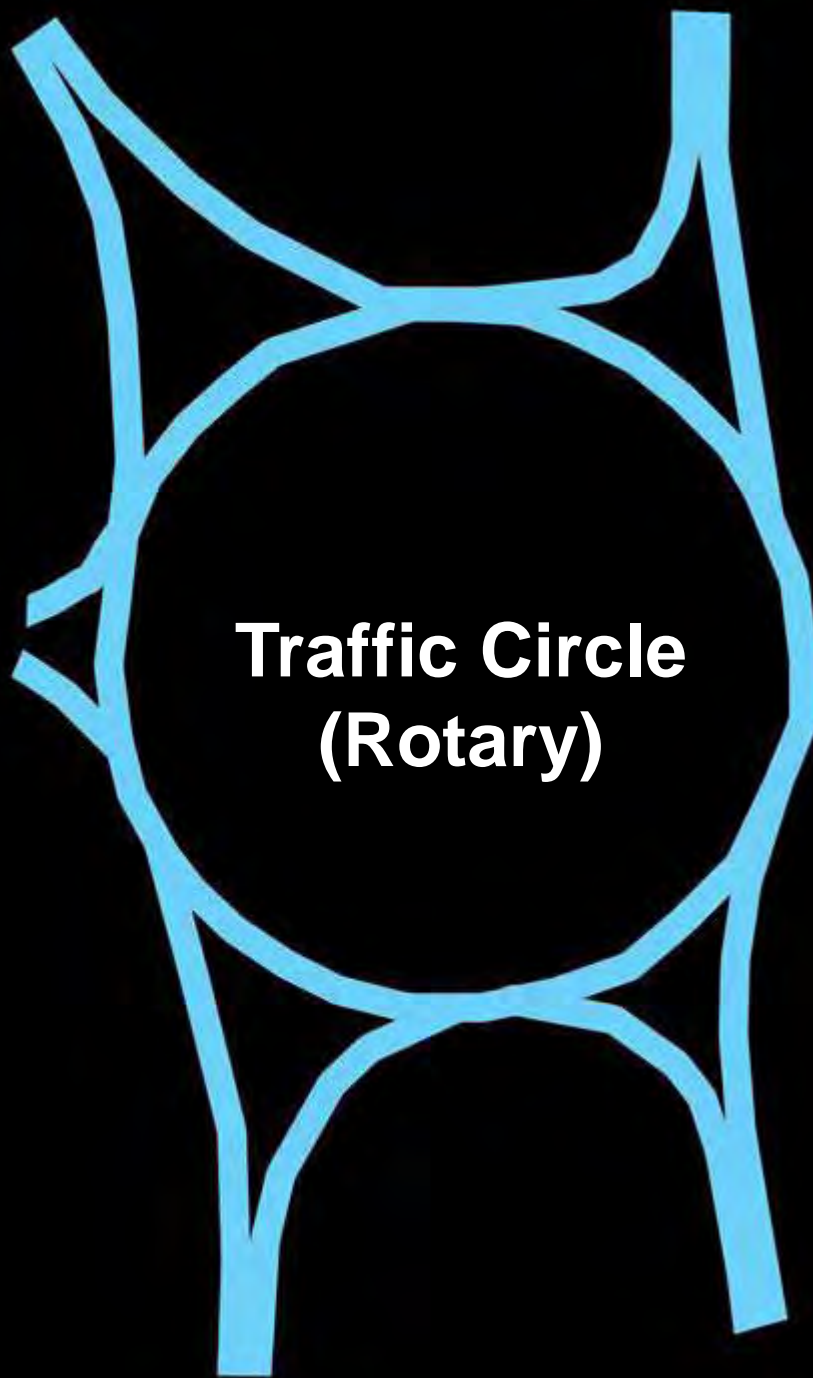
Phased Implementation

- Phase 2: Casey Arborway to Murray Circle
 - Grading challenges with hill
 - Interim connectivity with existing path



Revised Concept





**Modern
Roundabout**





Before:

Rotary



After:

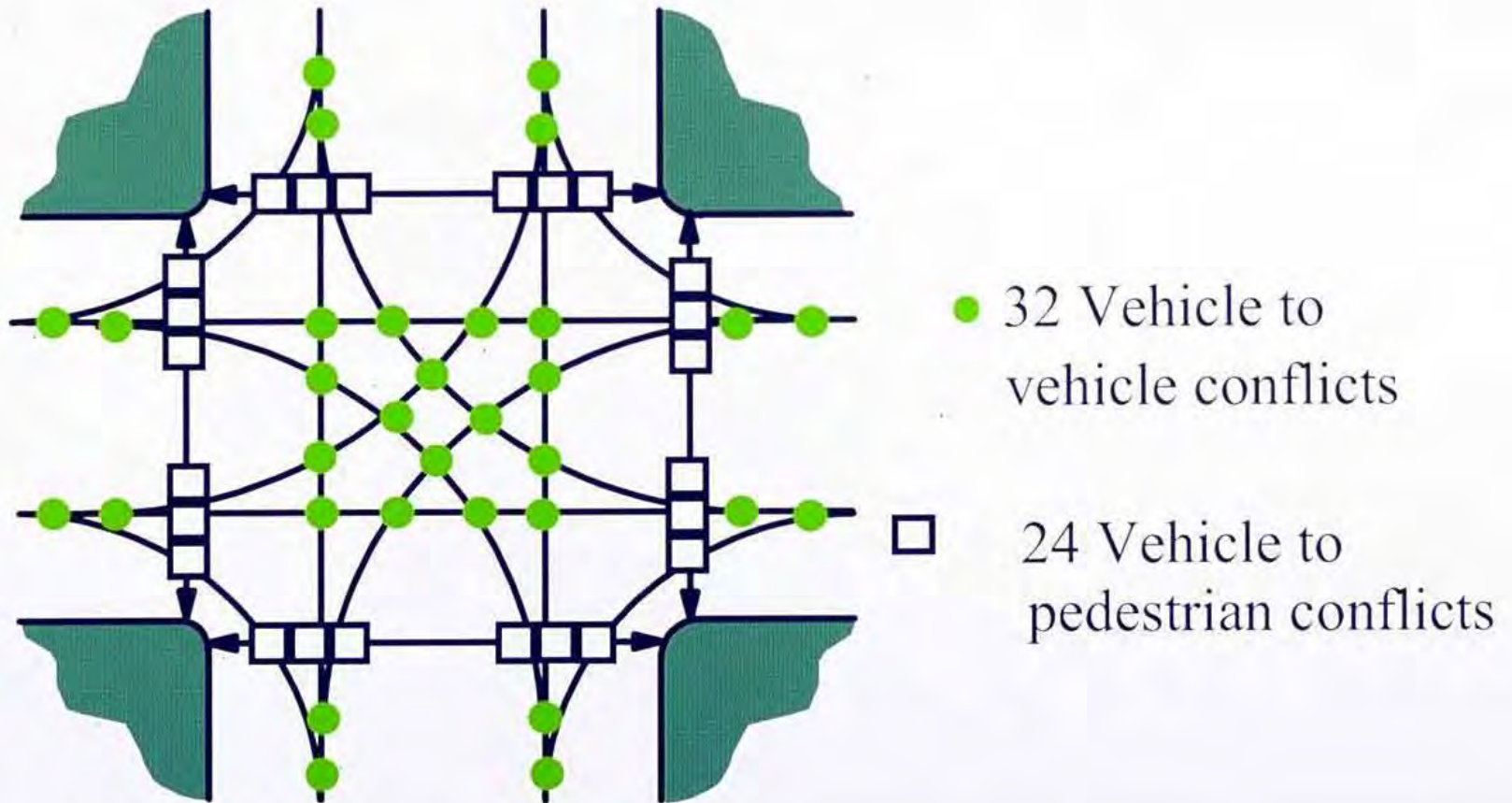
Roundabout

Worcester, MA

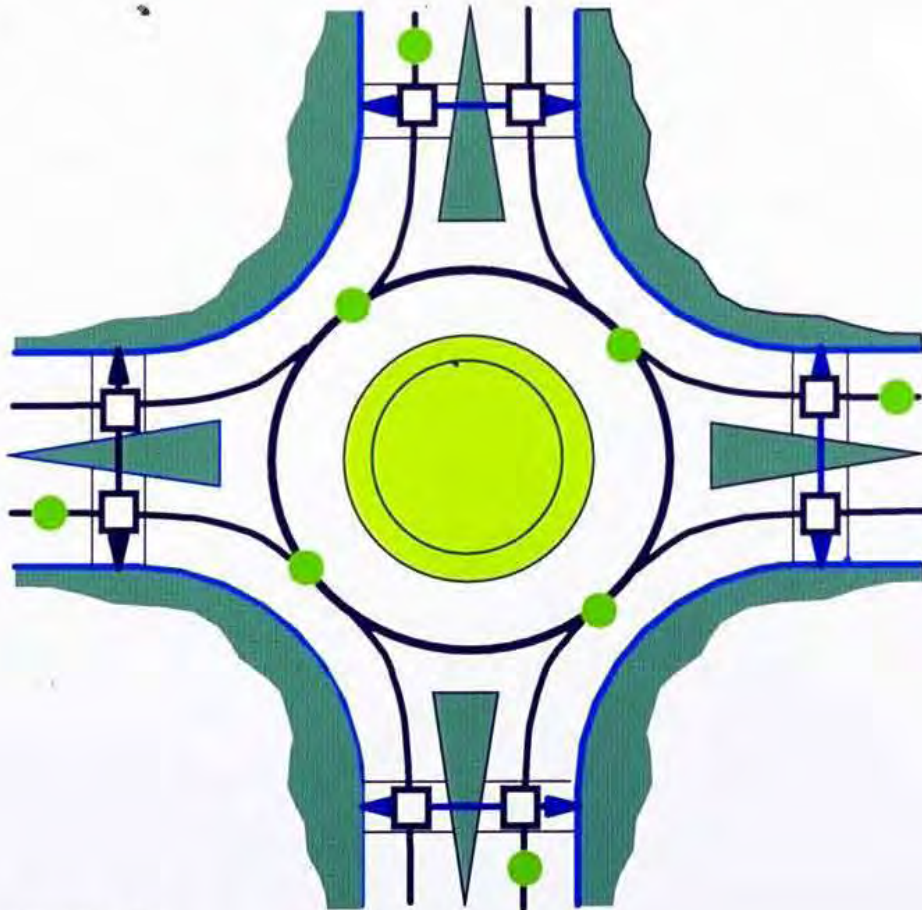
Revised Concept – Modern Roundabouts



Conflicts At a Four-Way Intersection



Conflicts At Roundabouts

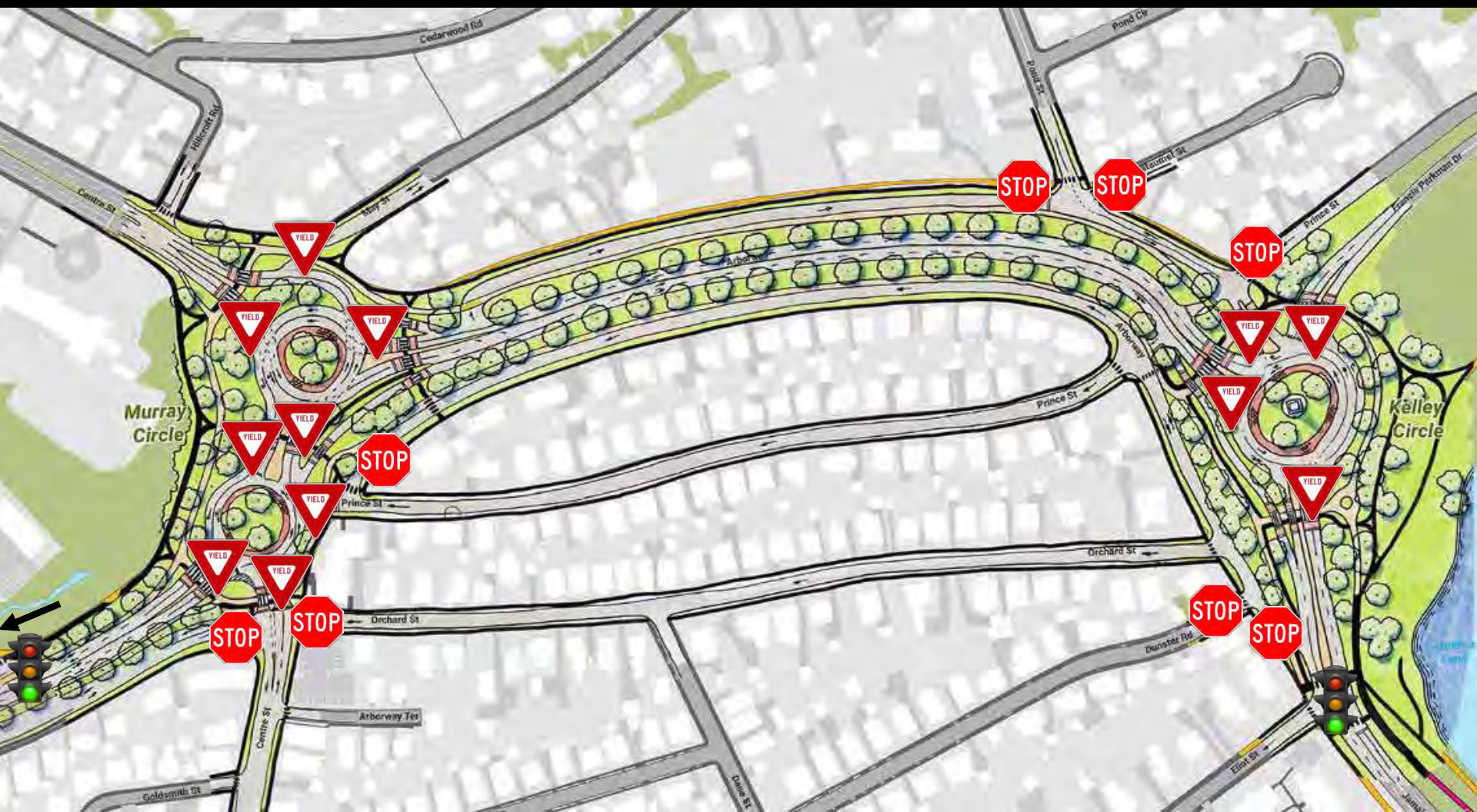


- 8 Vehicle to vehicle conflicts
- 8 Vehicle to pedestrian conflicts

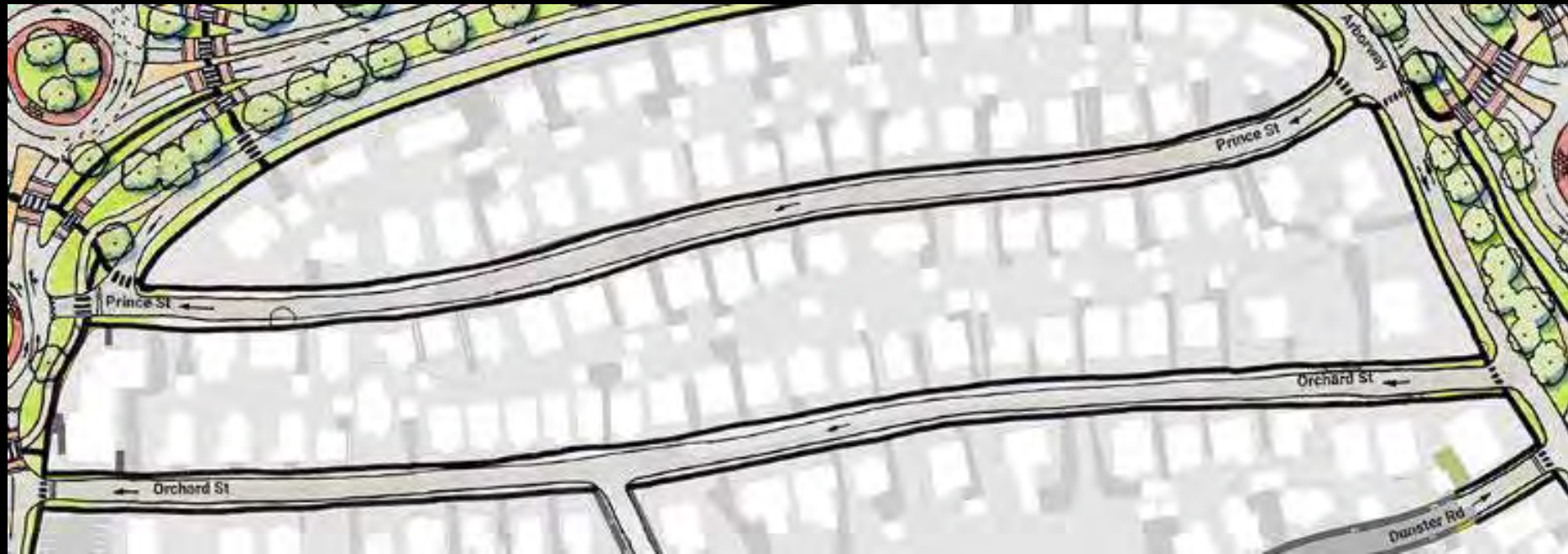




Revised Concept – Traffic Controls



Revised Concept – Prince/Orchard



Revised Concept – Carriageways





Existing

4.5' 13' 12.5' 1.5'

Shoulder
Travel Lane
Travel Lane
Shoulder

Existing

2.5' 13' 13.5' 2'

Shoulder
Travel Lane
Travel Lane
Shoulder

Existing



Existing

Existing

Existing

7' 11' 3' 10'

10' 3' 11' 7'

Parking

Travel Lane

Buffer

Bike Lane

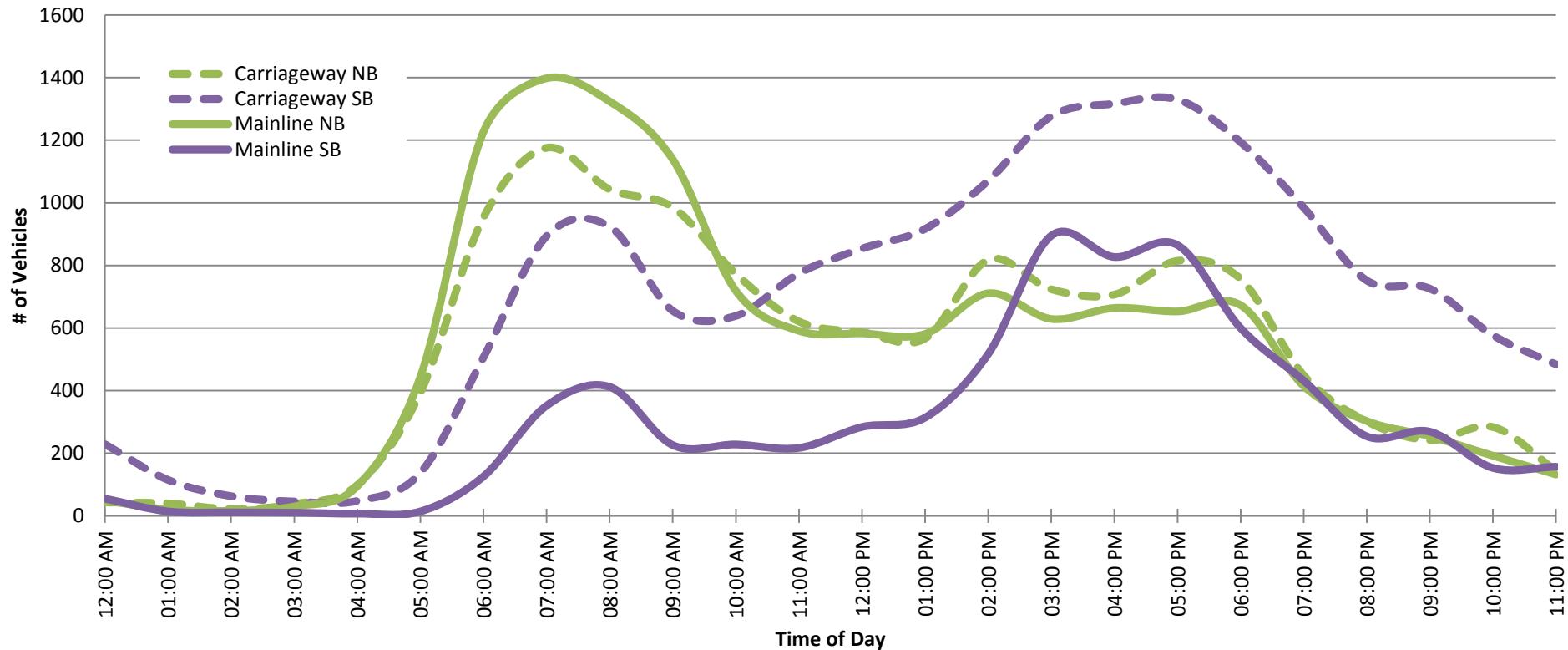
Bike Lane

Buffer

Travel Lane

Parking

Traffic Data: Arborway



Average Daily Traffic ~ 49,200 vehicles per day

AM Peak – 3,820 vehicles per hour

PM Peak – 3,660 vehicles per hour

Revised Concept



Traffic Model

AM Peak Hour Video at Real-Time Speed Facing West – 10/8/2015

PM Peak Hour Video at Real-Time Speed Facing West – 10/8/2015

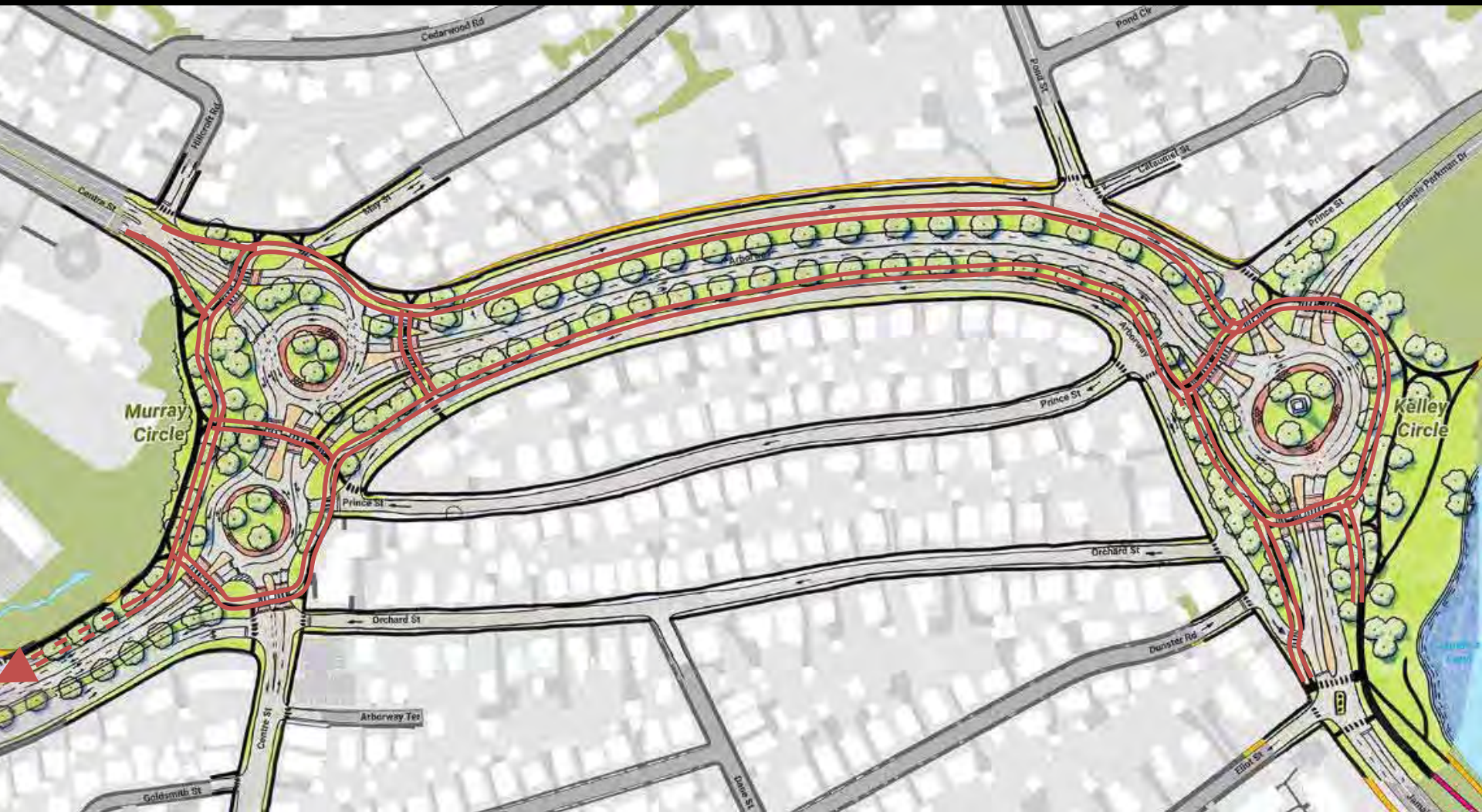
Revised Concept – Pedestrian Paths



Revised Concept – Pedestrian Paths



Revised Concept – Bicycle Facilities



Revised Concept – Historic Walls



Revised Concept – Trees



Revised Concept – Trees



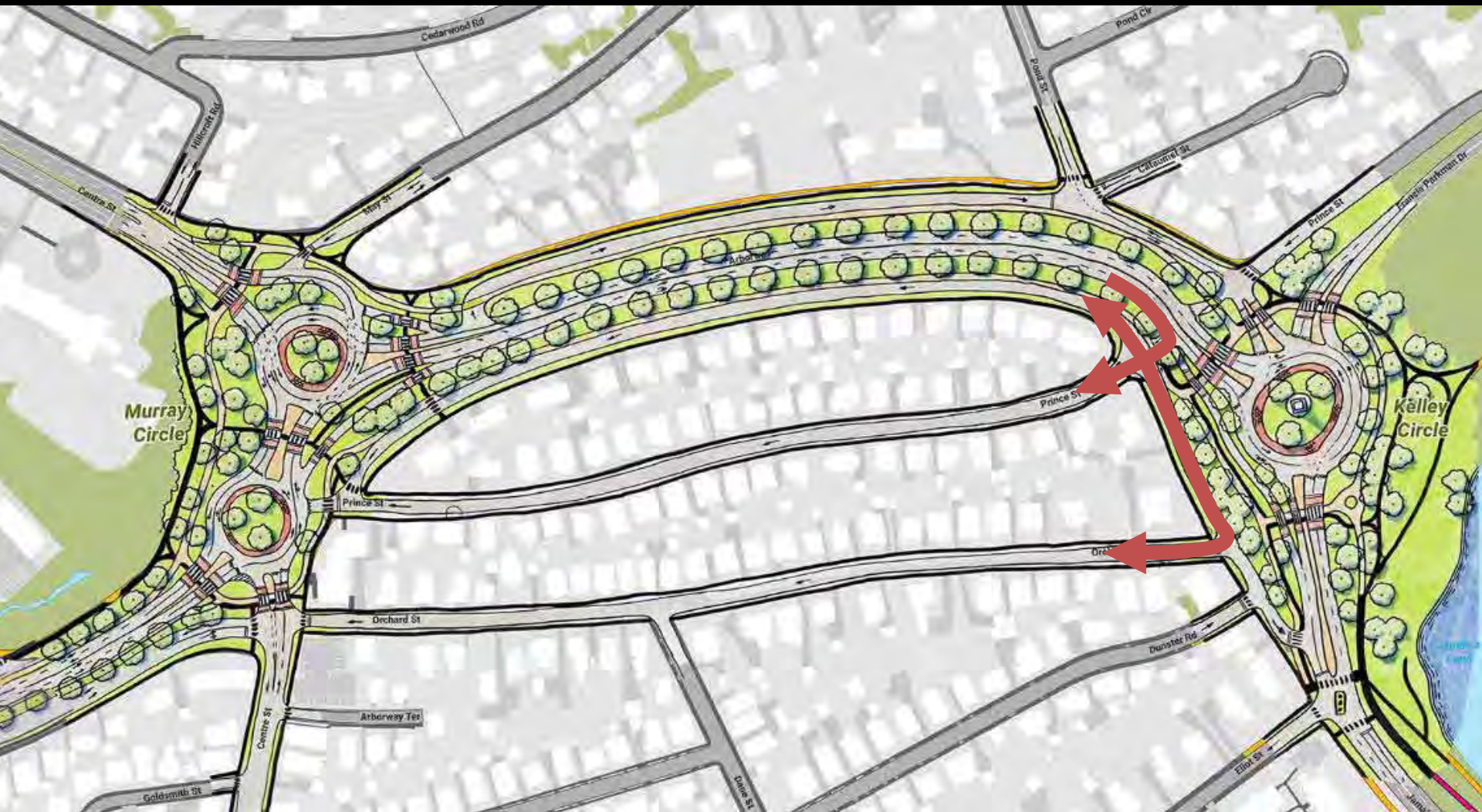
Revised Concept – Open Space



Revised Concept – Neighborhood Access



Revised Concept – Neighborhood Access



Anticipated Schedule

- Fall 2015
 - Obtain feedback
 - Initiate land survey for Phase 1
- Winter/Spring 2016
 - Develop 25% design plans for Phase 1
 - 25% Public Meeting
- Summer 2016 to Fall 2017
 - Finalize design plans + permitting for Phase 1
- Fall 2017
 - Construction for Phase 1
 - Reevaluate concepts for Phase 2

Upcoming DCR Public Meetings

Metro Boston DCR Parkways Study

Thursday, October 27th, 2015

6:30 – 8:00 pm

Shriners Hospital for Children Auditorium

51 Blossom Street

Boston, MA



Additional Information

For more information:

<http://www.mass.gov/eea/agencies/dcr/public-outreach/public-meetings/>

If you have comments:

Submit Online: <http://www.mass.gov/eea/agencies/dcr/public-outreach/submit-public-comments/>

Write: Department of Conservation and Recreation
Office of Public Outreach
251 Causeway Street, Suite 600
Boston, MA 02114

Deadline: Thursday, November 5, 2015

Note: Public comments submitted to DCR may be posted on the DCR website in their entirety.

If you have other questions or concerns, or wish to subscribe to a DCR general information or project-specific listserv: contact DCR's Office of Community Relations at 617-626-4973 or Mass.Parks@state.ma.us.