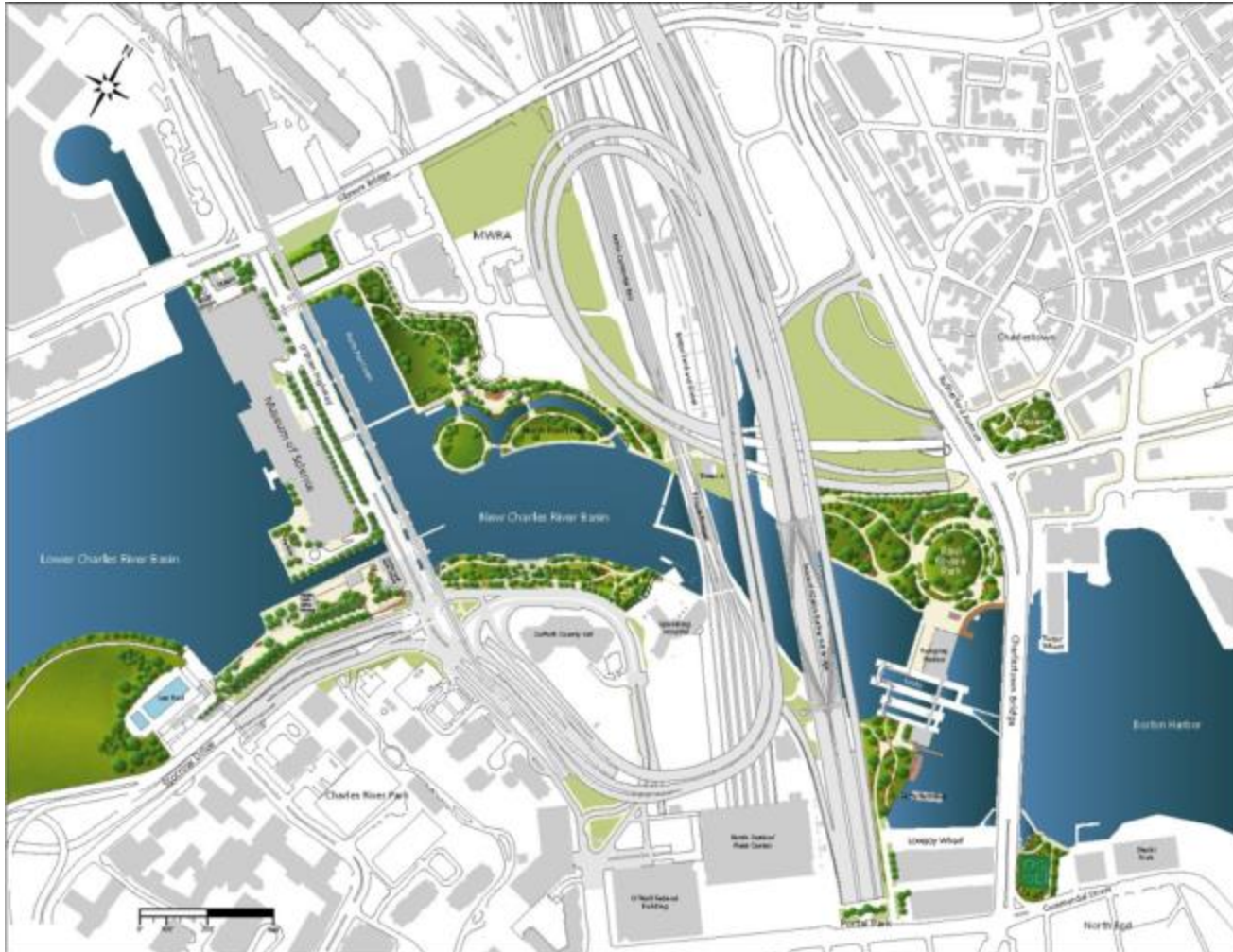


New Charles River Basin



Mitigation Background

- Mitigation for the Big Dig Charles River crossing included \$99.1 million for park improvements in the Charles River Basin.
- The \$30.5 million remaining balance from that amount has been transferred to DCR under an executed ISA to complete five projects
- MassDOT completed the North Bank Bridge and associated landscaping in 2012 through the American Recovery and Reinvestment Act of 2009
- The Lovejoy Wharf walkway has been completed by the developer of 160 North Washington Street
- The Lynch Family Skate Park has been completed by the Charles River Conservancy and opened on November 14, 2015

Lovejoy Wharf, February 2013



Lovejoy Wharf, January 2017



DCR Mitigation Measures Status and Schedule

Mitigation Measure	Current Status	FY 2017	FY 2018	FY 2019	
Stockpile Remediation	Phasing, estimates complete	6/30/17 Update study following EF III review			\$3,200,000
Maintenance facility	Temporary facility completed Study 100%	6/30/15 Update study following EF III review			\$2,700,000
Historic Dam Restoration					
Stable	Complete				
Lower Lock Gate House	DCAMM study completed				
Upper Lock Gate House		9/1/16 Design start	6/30/17 Design 100%	12/31/18 Construction 100%	
Boat House		9/1/16 Design start	6/30/17 Design 100%	12/31/18 Construction 100%	\$5,200,000
Draw bridge Walkway	Design 60%	Complete MBTA study			\$3,250,000
South Bank Bridge	Under design	3/31/16 Design 15%	12/31/16 Design 100%	6/30/18 Construction 50%	\$15,900,000
					\$30,250,000

MassDOT and other New Basin Projects

If sufficient funding remains after the required mitigation measures are completed, some of these projects may be funded

	Current Status	FY 2017	FY 2018	FY 2019	FY 2021
North Bank Bridge	COMPLETED 2012				
EF Education II	COMPLETED 2014				
North Point Skate Park	COMPLETED 2015				
Lovejoy Wharf Walkway	COMPLETED 2016				
South Bank Park	Conceptual design complete	Design complete MassDOT funded	Construction start	Construction complete	
Leverett Circle pedestrian bridge	Conceptual design complete	25% Design	Construction start	Construction complete	
EF Education III	EF EDUCATION	Design complete	Construction start	Construction complete	
North Washington Street Bridge	Conceptual design complete	Design complete	Construction start Lovejoy Wharf walkway demolished		Lovejoy Wharf walkway replaced
North Point Inlet Pedestrian Bridge	MassDOT/ Cambridge MOA				





New Charles River Basin Citizens Advisory Committee, January 17, 2017

Upper Lock Gate House



Division of Capital Asset Management and Maintenance

LOWER BASIN BARRACKS MODERNIZATION

Massachusetts State Police



Project Purpose

- Massachusetts State Police require an upgraded barracks at current location to address public safety in the Charles River Lower Basin and patrol transportation infrastructure
- Current facility is in poor condition, undersized and dysfunctional
- Permanent presence of MassDOT drawbridge operator will be maintained
- Public access and recreation uses will be preserved

South Bank Bridge



View from the seawall walkway

Alignment 016d

South Bank Bridge



View from the Nashua Street Pier, looking west

Alignment 016d

South Bank Bridge



View from Nashua Street, fifth floor

Alignment 016d

Leverett Circle Pedestrian Bridge Boston, Massachusetts

RHP

Type: Curved Concrete Bridge
Services: Conceptual Design and Architectural Visualizations
Cost: \$3.7 Million (projected construction cost)
Completion Date: 2015

Client: MassDOT
10 Park Plaza
Boston, MA 02116
Amy Getchell, Project Manager

The new pedestrian bridge over Leverett Circle in Boston next to the Museum of Science will be a concrete circular bridge supported by slender Y-shaped steel columns. This bridge is contemporary and streamlined in appearance; with spans varying from 120' (36.5m) to 100' (30.5m). The bridge appears to be suspended over the busy interchange and connects directly to the Green Line train station. The simplicity and understatement of the bridge allows for uninterrupted views of the Charles River and adjacent historic buildings.



37 Newbury Street, 6th Floor, Boston, MA 02116

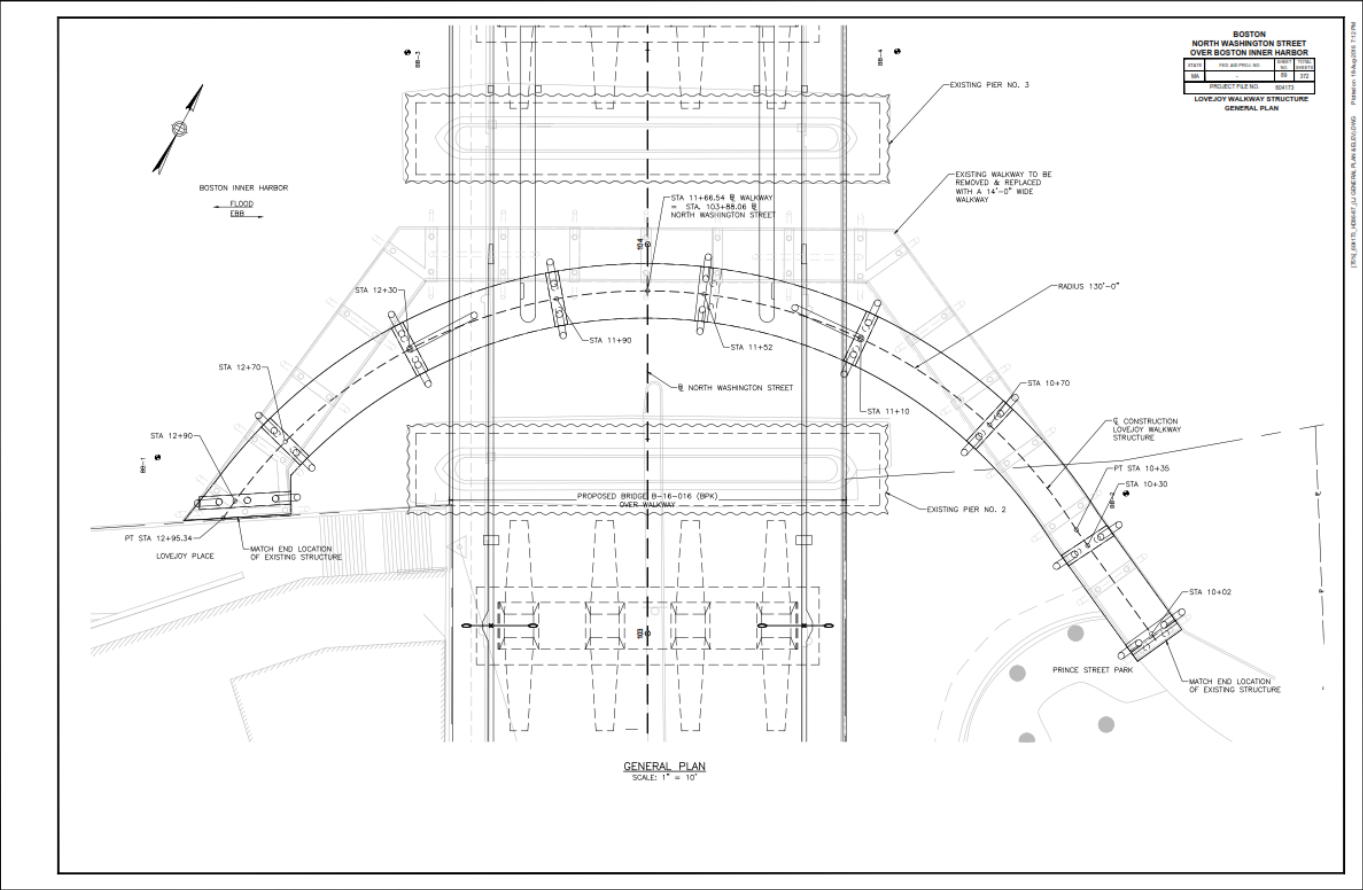
1.617.247.7499

1.617.247.7139

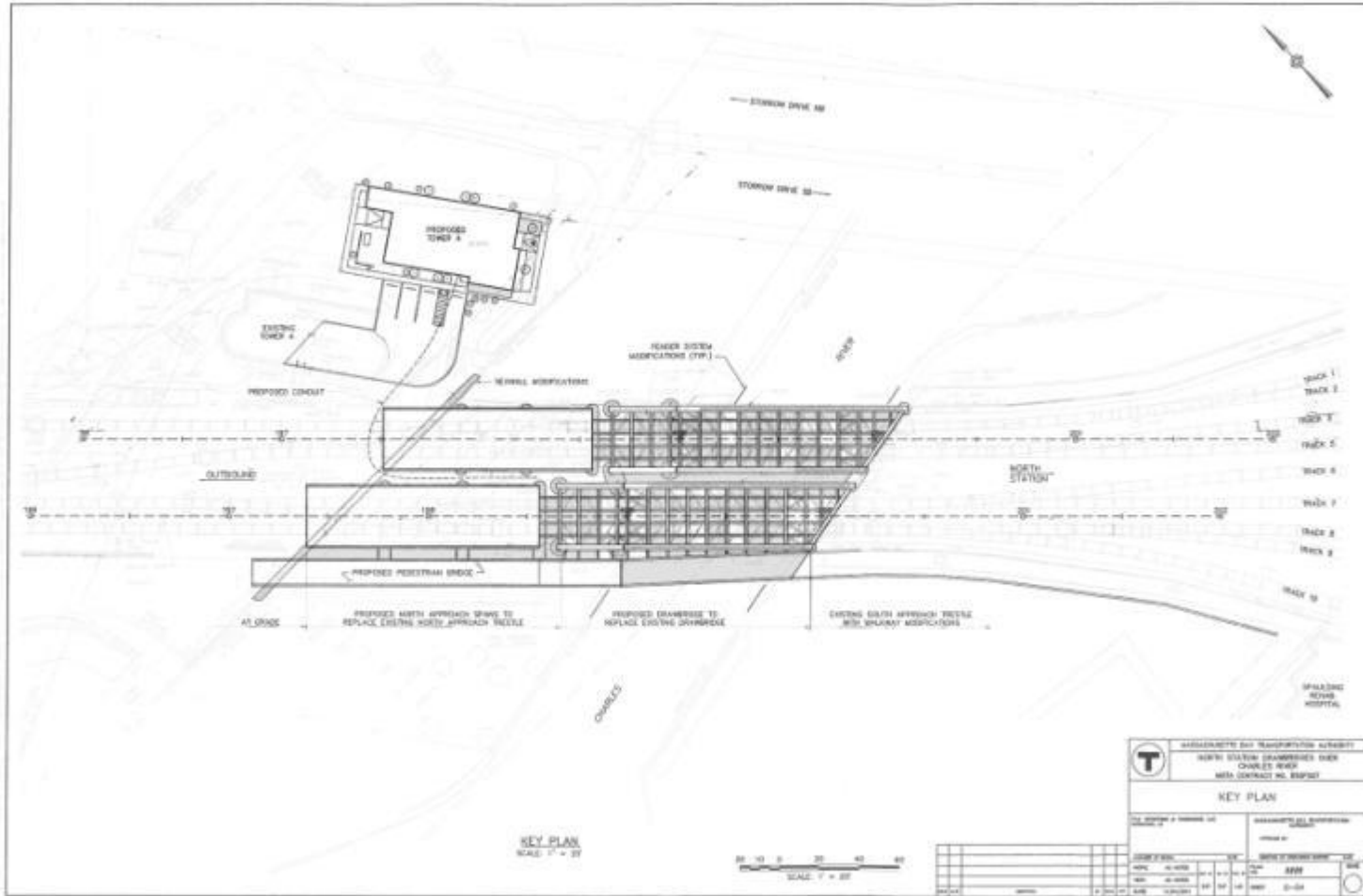
info@rosalespartners.com

www.rosalespartners.com

Lovejoy Wharf Walkway



Drawbridge Walkway



Drawbridge Walkway

