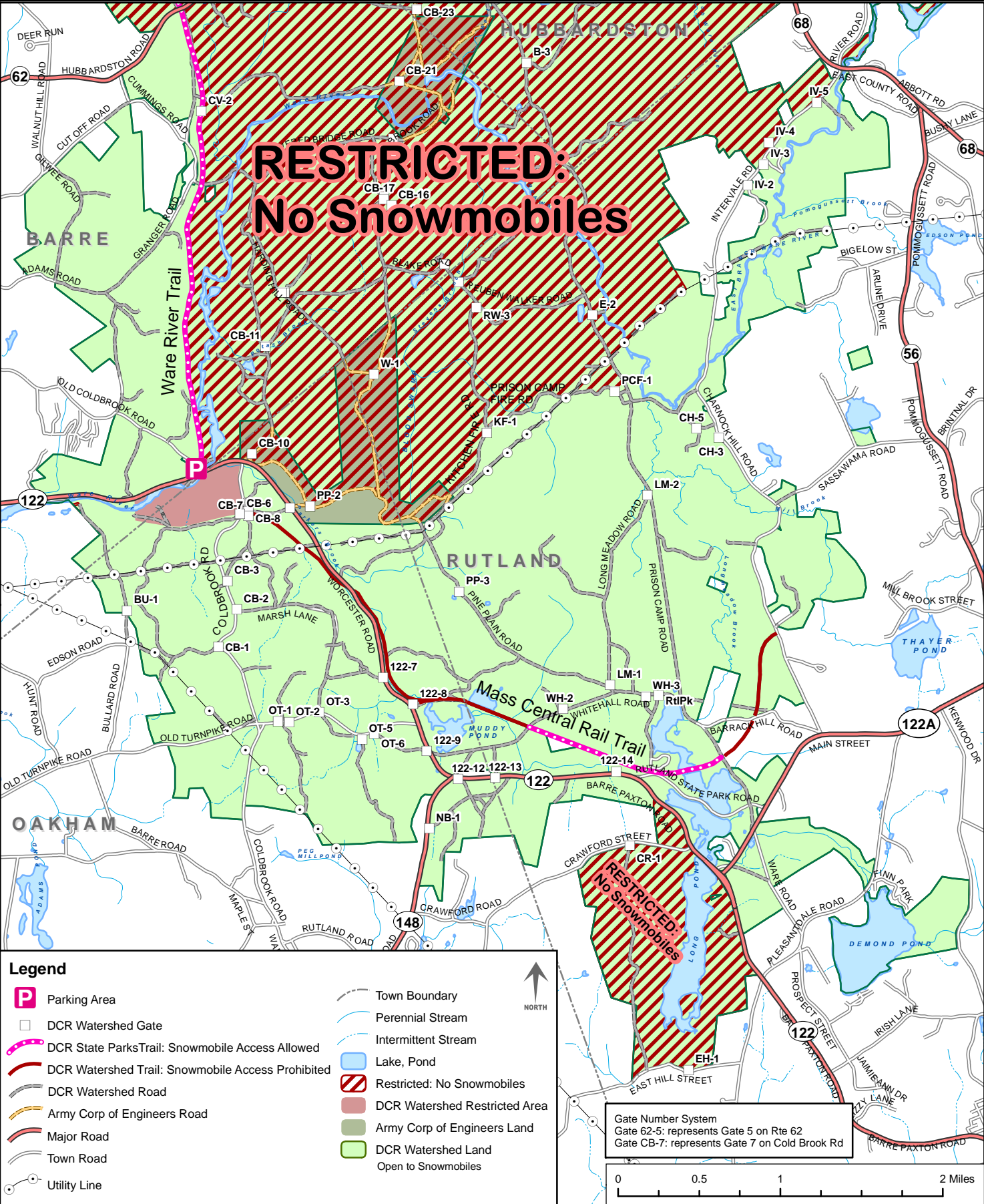




# Designated Snowmobile Access Map B

Division of Water Supply Protection - Office of Watershed Management  
Ware River Access Plan 2011



**Legend**

- Parking Area
- DCR Watershed Gate
- DCR State Parks Trail: Snowmobile Access Allowed
- DCR Watershed Trail: Snowmobile Access Prohibited
- DCR Watershed Road
- Army Corp of Engineers Road
- Major Road
- Town Road
- Utility Line
- Town Boundary
- Perennial Stream
- Intermittent Stream
- Lake, Pond
- Restricted: No Snowmobiles
- DCR Watershed Restricted Area
- Army Corp of Engineers Land
- DCR Watershed Land Open to Snowmobiles

NORTH

Gate Number System  
Gate 62-5: represents Gate 5 on Rte 62  
Gate CB-7: represents Gate 7 on Cold Brook Rd

0      0.5      1      2 Miles