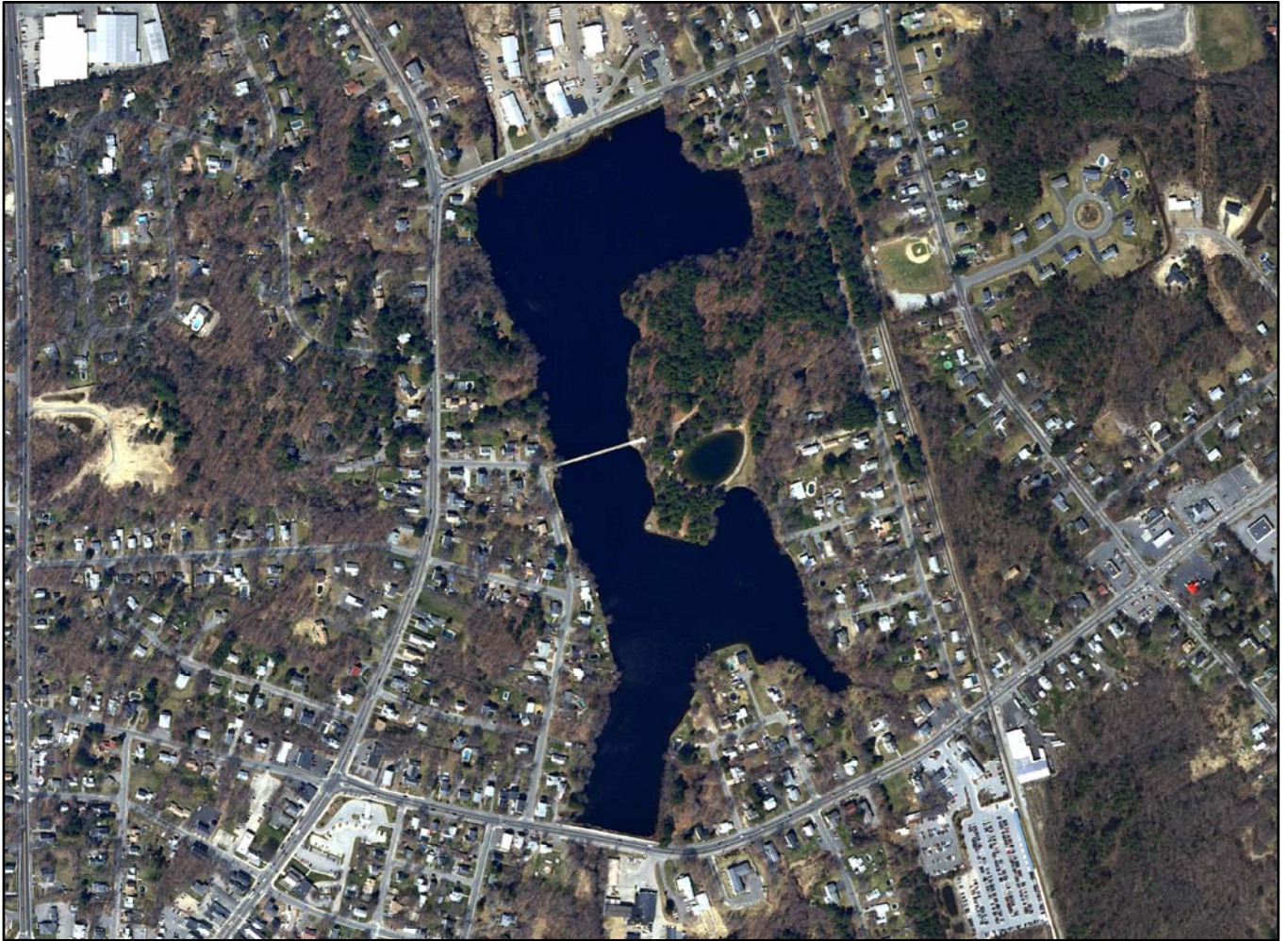
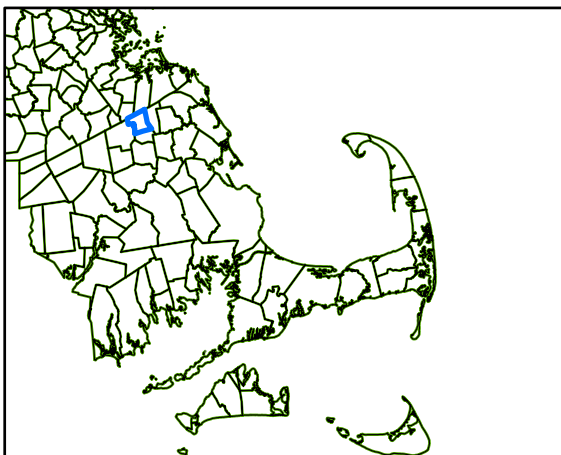
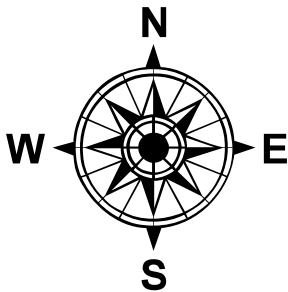


Island Grove Pond - Abington 38 Acres



0 350 700 1,400 Feet



Island Grove Pond Abington

Plymouth County

Taunton River Watershed

Latitude: 42.11094 N Longitude: 70.94083 W



38 Acres

Depth: 4.5 Feet Average
10 Feet Maximum

Primary Gamefish:
Largemouth Bass, Trout

www.mass.gov/masswildlife

General Information:

Island Grove Pond is a 38 acre artificial pond created in the 1700s by building a dam on the Shumatuscacant River. The impoundment created was used to power a sawmill. The 1.74 miles of shoreline has on the eastern shoreline the 11 acre town owned Island Grove park with picnic tables, a summer camp (Busy Beaver Summer Camp) and a town swimming pool; the rest of the shoreline is developed with road frontage and residences. The bottom is sand along the edges and muck in the deep areas. Aquatic vegetation is abundant.

Abington's Island Grove Park is often called the "Crown Jewel of Abington" and has long been a historic gathering spot. From 1846-1865, the park drew crowds of Abolitionists, this historic use was honored in 1909 at the spot where speakers once addressed the annual meetings. In 1902, the Civil War Memorial Arch and Bridge were constructed to honor the town's Civil War veterans for the town's bicentennial. In 2002, the park was added to the National Register of Historic Places.

Access:

Shoreline fishing is readily available from Island Grove Park with the main entrance off Park Street and access across the Memorial Bridge from Wilson Place. Small non motorized boats and canoes can be launched from the park.

Management History:

Prior to the 1950s, the pond had been stocked with chain pickerel, smallmouth bass, yellow perch, white perch and brown bullheads. It was spot checked with rotenone on July 7, 1955 and contained largemouth bass, yellow perch, pumpkinseeds, chain pickerel, brown bullheads, tessellated darters and black crappie. The dam was reported as being destroyed in an August 18, 1955 flood. The pond was completely drained in 1967 when vandals removed the final planks when the pond was lowered to construct the town's swimming area. It was stocked with 500 5-7" largemouth bass on October 24, 1957; 1,915 2.5-7" largemouth bass on October 5, 1973 and 6,400 fingerling and 900 larger sized largemouth bass from the Harold Parker Hatchery on October 8, 1974. Island Grove Pond was most recently sampled by electrofishing on July 20, 1973 and contained largemouth bass, yellow perch, golden shiner, pumpkinseed, and brown bullhead. A September 16, 1976, survey with gill nets captured largemouth bass, yellow perch and one chain pickerel.

Fish Populations:

Island Grove Pond was most recently sampled on October 7, 1982 and contained largemouth bass, bluegill, yellow perch, pumpkinseed, black crappie, golden shiner, and one large common carp.

Fishing:

Due to easy access the pond receives heavy fishing pressure for warmwater species such as largemouth bass and panfish such as bluegill, pumpkinseed and yellow perch. A trial stocking of rainbow trout was made in April 2009 and if the stocking is well received will continue in future years. Other nearby ponds include Studleys Pond in Rockland, Hobart Pond in Whitman, Cleveland Pond in Abington, and the ponds in D.W. Field park in Brockton.

For More Information: www.state.ma.us/masswildlife or contact Southeast District HQ, MassWildlife, 195 Bournedale Road, Buzzards Bay, MA 02532 (508) 759-3406