



# Lake Sabbatia, Taunton

## General Information

Lake Sabbatia or Scaddings Pond is a 248 acre great Pond located off Bay St. north of Taunton center. The average depth of Lake Sabbatia is 10 feet with a maximum of 35 feet and the water is tea colored and transparent to roughly 4 feet. The bottom is predominantly mud and aquatic vegetation can be found along the shoreline and in all of the coves, particularly within the northern end which is uniformly shallow. The shores of Lake Sabbatia are developed with year-round residences and contribute to heavy use of the lake during the summer months. Lake Sabbatia is subject to an annual drawdown thus use caution when navigating during fall and winter as depth varies seasonally.

## Recreational Access

The City of Taunton manages a concrete boat ramp and adjacent parking area (71°6'51.247"W 41°56'47.855"N) suitable for 17 trailers off of Bay Street on the lakes western shore. The shoreline may be accessed from the boat ramp, south along Bay Street through undeveloped land. Please contact the offices of the city of Taunton for additional information, and/or restrictions pertaining to public access of Lake Sabbatia.

## Fish Populations

The following fish species were found during MassWildlife surveys: Largemouth Bass, Chain Pickerel, Yellow Perch, White Perch, Black Crappie, Bluegill, Pumpkinseed, Brown Bullhead, Golden Shiner, Banded Killifish, Tessellated Darter, and American Eel.

## Fishing

Lake Sabbatia offers good fishing for an assortment of warm water fish. Largemouth Bass and Chain Pickerel are abundant with the occasional larger individual. Yellow Perch and Bluegill are also abundant and can be caught in good numbers along weedy shorelines and in coves. Lake Sabbatia has produced Largemouth Bass, Chain Pickerel, Yellow Perch, and sunfish that meet minimum sizes for recognition by the Freshwater Sportfishing Awards Program

## Useful Links:

[Get your Fishing License](#)

[Freshwater Fishing](#)

[Trout Stocking Information](#)

[Freshwater Sportfishing Awards Program](#)

## Learn more

[Mass.gov/MassWildlife](https://mass.gov/MassWildlife)

## Connect with us

[Facebook.com/MassWildlife](https://facebook.com/MassWildlife)

## Your local

### MassWildlife office

195 Bournedale Rd  
Buzzards Bay, 02532  
(508) 759-3406

## STOP AQUATIC HITCHIKERS!

Prevent the transport of nuisance species.  
Clean all recreational equipment.  
[ProtectYourWaters.net](https://ProtectYourWaters.net)

Updated: 2018



# Lake Sabbatia

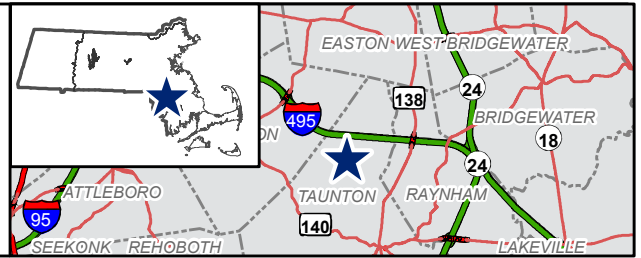
248 Acres

Taunton

Taunton River Watershed

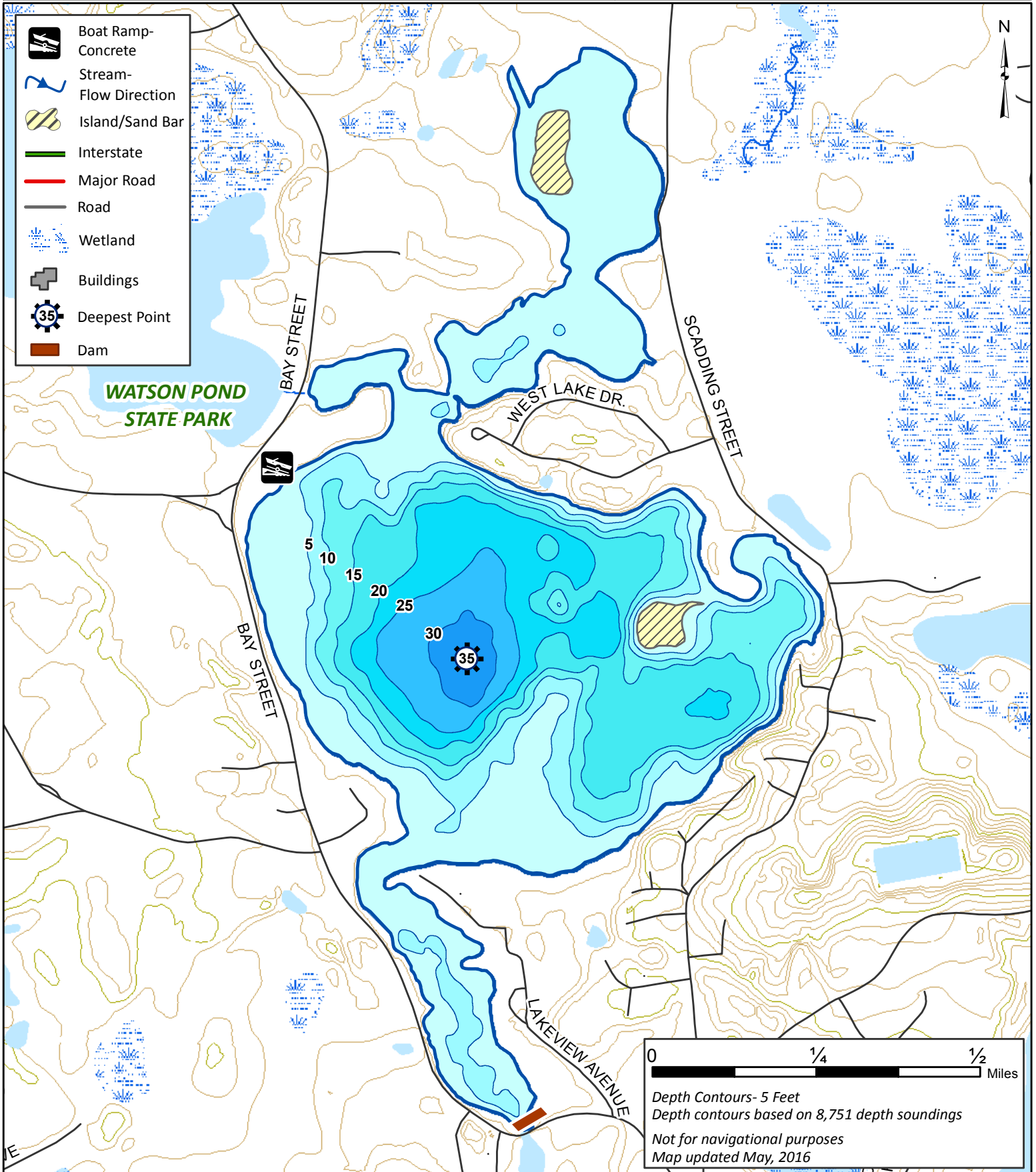
Coordinates: 71°06'51"W 41°56'47"N

USGS Quad: TAUNTON



- Boat Ramp- Concrete
- Stream- Flow Direction
- Island/Sand Bar
- Interstate
- Major Road
- Road
- Wetland
- Buildings
- Deepest Point
- Dam

WATSON POND  
STATE PARK



0 1/4 1/2 Miles

Depth Contours- 5 Feet  
Depth contours based on 8,751 depth soundings  
Not for navigational purposes  
Map updated May, 2016