

COMMONWEALTH OF MASSACHUSETTS

ENERGY FACILITIES SITING BOARD

**NOTICE OF ADJUDICATION
NOTICE OF PUBLIC COMMENT HEARING**

EFSB 18-01/D.P.U. 18-30

Colonial Gas Company
d/b/a National Grid

Notice is hereby given that on March 30, 2018, pursuant to G.L. c. 164, § 69J and G.L. c. 40A, § 3, Colonial Gas Company d/b/a National Grid (“Colonial” or the “Company”), located at 40 Sylvan Road, Waltham, Massachusetts 02451, filed petitions with the Energy Facilities Siting Board (the “Siting Board”) and the Department of Public Utilities (the “Department”) in connection with the Company’s proposed Lowell Area Gas Modernization Project (the “Project”) in the Towns of Tewksbury and Chelmsford, and the City of Lowell, Massachusetts. The Project would replace 2.40 miles of an existing 5.85-mile natural gas pipeline system with new, larger diameter pipeline between the Tewksbury Take Station in Tewksbury and the Wilbur Gas Regulator Station (“Wilbur GRS”) in Lowell. The Project would provide a standard pipeline diameter on the 5.85-mile system and would allow Colonial to use advanced inspection equipment that can travel through the pipeline. The Company also filed a petition pursuant to G.L. c. 40A, § 3, for several individual and a comprehensive exemption from the Town of Tewksbury Zoning Bylaw. Colonial’s petitions have been consolidated into one proceeding and will be heard by the Siting Board. The docket number for this proceeding is EFSB 18-01/D.P.U. 18-30.

Opportunity for Public Comment

The Siting Board will conduct a public comment hearing on the proposed Project:

**June 19, 2018, at 7 pm at the Sullivan Middle School
Auditorium, 150 Draper Street, Lowell MA 01852**

At the public comment hearing, the Company will present an overview of the proposed Project. Public officials and the public will then have an opportunity to ask questions and provide comments about the Project. Interpreters for Spanish-, Portuguese-, and Khmer-speaking attendees will be available.

Written comments may be submitted at the hearing, or filed with the Siting Board through July 3, 2018, at the address below:

Robert J. Shea, Esq.
Energy Facilities Siting Board
One South Station, 5th Floor
Boston, MA 02110
Robert.j.shea@state.ma.us

Siting Board Jurisdiction

Colonial's petitions have been consolidated into one proceeding for review by the Siting Board. The Siting Board will review the Company's filing to determine whether the proposed Project will provide a reliable energy supply with a minimum impact on the environment at the lowest possible cost pursuant to G.L. c. 164, §§ 69H, 69J. Pursuant to G.L. c. 40A, § 3, the Siting Board will also consider whether the upgrades to the Tewksbury Take Station are "reasonably necessary for the convenience or welfare of the public" and whether the requested zoning exemptions are warranted.

Preferred Route for the Pipeline Replacement

As part of the Project, Colonial proposes to replace portions of its existing Tewksbury Mainline and the Wilbur Lateral in its entirety. The Tewksbury Mainline passes through Tewksbury, Billerica, Chelmsford and Lowell and includes an approximately 0.4-mile crossing beneath Riverneck Road in Chelmsford and the Interstate-495/Lowell Connector interchange ("Highway Crossing"). West of the Highway Crossing, the Tewksbury Mainline branches into the Wilbur and Doane Laterals. The Project includes the following specific components: (1) replacement of the existing Highway Crossing with new 12-inch coated-steel pipeline to be installed via horizontal directional drilling ("HDD"); (2) replacement of the Wilbur Lateral with new 12-inch coated-steel pipeline within the Company's existing Wilbur right-of-way ("ROW"); (3) installation of a launcher and replacement of fittings at the Tewksbury Take Station; (4) replacement of a line elbow near Whipple Road in Tewksbury; (5) replacement of a line tee at Brick Kiln Road Gas Regulator Station ("Brick Kiln GRS") in Chelmsford; and (6) installation of a receiver at the Wilbur GRS.

Colonial has identified a Preferred Route for the proposed Project that largely follows the Company's existing Wilbur Lateral. The Preferred Route would replace the Highway Crossing and Wilbur Lateral primarily along the existing pipeline route. The Highway Crossing begins at 128/140 Riverneck Road in Chelmsford, crosses under Riverneck Road and the Interstate-495/Lowell Connector to 32 Reiss Avenue in Lowell. The Preferred Route continues on commercial properties north of Route 3 until it crosses Route 110, at which point it enters the existing Wilbur ROW. The existing Wilbur ROW continues through mostly undeveloped properties adjacent to Route 3 for about two miles to the Wilbur GRS, located at 61/63 Wilbur Street in Lowell.

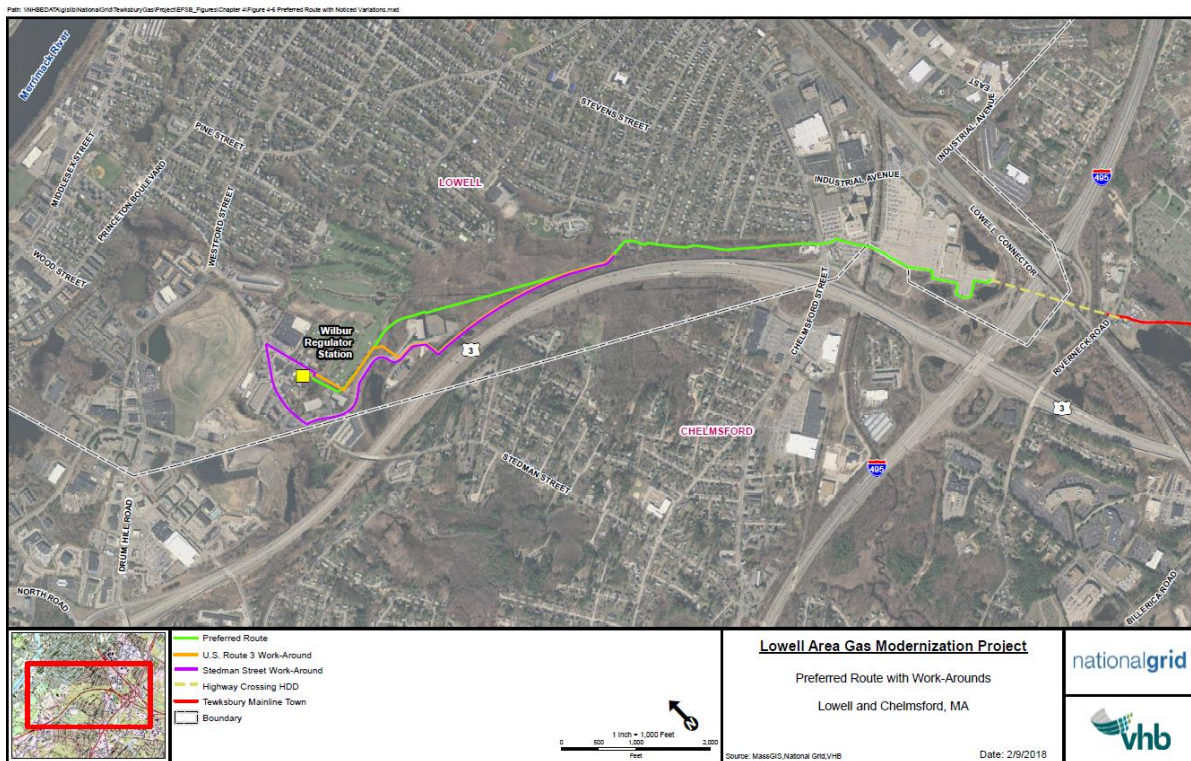
Variations The Company identified and evaluated two potential variations near the Wilbur GRS: the Route 3 Variation and the Stedman Street Variation. Either of the two variations would modify the Preferred Route.

Both variations diverge from the Preferred Route at the point where the pipeline crosses into the Route 3 highway corridor. The variations initially follow the Route 3 highway corridor until the property line between 175 and 180 Olde Canal Drive. The variations proceed along the driveway of 180 Olde Canal Drive to the cul-de-sac at the end of Olde Canal Drive. At this point, the Route 3 Variation diverges from the Stedman Street Variation.

The Route 3 Variation turns north just east of the Olde Canal Drive cul-de-sac, proceeding toward the Mount Pleasant Golf Club property. The route turns west and follows the southern edge of the Golf Club property. At the western edge of the Golf Club property, the route turns north, eventually entering the Wilbur Street roadway and turning into the Wilbur GRS.

In contrast, after the Olde Canal Drive cul-de-sac, the Stedman Street Variation continues westward along Olde Canal Drive to Stedman Street. At Stedman Street, the route turns north and runs along Stedman Street until it turns south onto Wilbur Street and turns into the Wilbur GRS at the end of this road.

Figure 1: Preferred Route with Variations



Launcher and Receiver Facilities

The facilities for inspection equipment that travels within the pipeline will be installed at the Tewksbury Take Station and the Wilbur GRS, respectively. Specifically, there will be installation of a launcher and replacement of fittings at the Tewksbury Take Station and the installation of a receiver at the Wilbur GRS.

Additional Location-Specific Work

To allow for the passage of inspection equipment through the pipeline past the Brick Kiln Road GRS, Colonial will remove and replace a pipeline tee near the intersection of the pipeline ROW with Brick Kiln Road in Chelmsford. To allow for the passage of inspection equipment through a pipeline elbow near Whipple Road in Tewksbury, Colonial will replace two short sections of existing underground pipe. Additionally, Colonial will inspect and remove an interconnect in this area.

Public Review of the Company's Petition

The general location, layout, dimensions and configuration of the Project are shown on maps and plans included in the Company's petitions. Copies of the Company's petitions and attachments are available for public inspection at the Energy Facilities Siting Board, One South Station, Boston, MA 02110 and at the Company's Office at 40 Sylvan Road, Waltham, MA 02451. Copies are also available at the following locations:

- Tewksbury Town Clerk, Town Hall, 1009 Main Street, Tewksbury, MA 01876;
- Tewksbury Public Library, 300 Chandler Street, Tewksbury, MA 01876;
- Chelmsford Town Clerk, 50 Billerica Road, Chelmsford, MA 01824;
- Chelmsford Public Library, 25 Boston Road, Chelmsford, MA 01824;
- Lowell City Clerk, Lowell City Hall, 375 Merrimack Street, Lowell, MA 01852;
- Pollard Memorial Library (Lowell Public Library, Main Branch), 401 Merrimack St, Lowell, MA 01852.

In addition, the Company's Petitions, including all attachments, are electronically available via the Department of Public Utilities' website at: <http://web1.env.state.ma.us/DPU/Fileroom/dockets/bynumber>. Enter "EFSB18-01" (with no spaces) into the search box. To request materials in accessible formats for people with disabilities (Braille, large print, electronic files, or audio format) contact the Department's ADA coordinator at DPU/ADACoordinator@state.ma.us or (617) 305-3500.

Intervention and Participation

Persons or groups who wish to be involved in the Siting Board proceeding beyond providing comments at the public comment hearing may seek either to intervene as a party or to participate as a limited participant. Intervention as a party allows the person or organization to participate in the evidentiary phase of this proceeding, including evidentiary hearings in Boston, and grants the right to appeal a final decision. A limited participant may receive many of the documents that will be submitted to the Siting Board and present written or oral argument to the Siting Board after evidentiary hearings conclude. Any person interested in intervening as a party or participating as a limited participant in this proceeding must file a written petition with the

Presiding Officer. Petitions must satisfy the timing and substantive requirements of 980 C.M.R. 1.05, the Siting Board's procedural rules, which can be found on the Board's website at: <http://www.mass.gov/eea/energy-utilities-clean-tech/energy-facilities-siting-board>.

A petition to intervene or participate as a limited participant must be filed in three places.

First, the petition must be filed in hard copy with the Presiding Officer, Robert J. Shea, Energy Facilities Siting Board, One South Station, Boston, Massachusetts, 02110, no later than the close of business (5:00 p.m.) on July 3, 2018.

Second, the petition must be filed with the Siting Board in electronic format by e-mail attachment to dpu.efiling@state.ma.us. The text of the email must specify: (1) the docket number of the proceeding (*i.e.*, EFSB 18-01/D.P.U. 18-30); (2) the name of the person or entity submitting the filing; and (3) a brief description of the document. The electronic filing should also include the name, title and telephone number of a person to contact in the event of questions about the filing. Furthermore, an electronic copy of the petition must be sent to the Presiding Officer at robert.j.shea@state.ma.us.

Third, the petition must be sent to counsel for Colonial, David S. Rosenzweig, Esq., Keegan Werlin LLP, 99 High Street, Suite 2900, Boston, MA 02110; or drosen@keeganwerlin.com.

Reasonable accommodations for people with disabilities are available upon request. Include a description of the accommodation you will need, including as much detail as you can. Also include a way we can contact you if we need more information. Please provide as much advance notice as possible. Last minute requests will be accepted, but may not be able to be accommodated. Contact the Department's ADA coordinator at DPU/ADACoordinator@state.ma.us or (617) 305-3500.

Interpretation services for those with limited English language proficiency are available upon request. Include in your request the language required, and a way to contact you if we need more information. Please provide as much advance notice as possible. Last minute requests will be accepted, but may not be able to be accommodated. Contact the Presiding Officer (contact information below).

Any person desiring further information regarding this Notice, including information about intervention or participation in the adjudicatory proceeding, may contact the Presiding Officer at the address, telephone number, or email below:

Robert J. Shea, Presiding Officer
Energy Facilities Siting Board
One South Station
Boston, MA 02110
(617) 305-3525
robert.j.shea@state.ma.us