

## NEXT STEPS

After you have traveled over the Bourne Bridge, all traffic will be directed to continue west on Route 25 towards Wareham/ Rt 195/ Rt 495. If you wish to go to Buzzards Bay, you must continue until Exit 2, Glen Charlie Rd Wareham, and then take Route 6 and 28 back to Buzzards Bay.

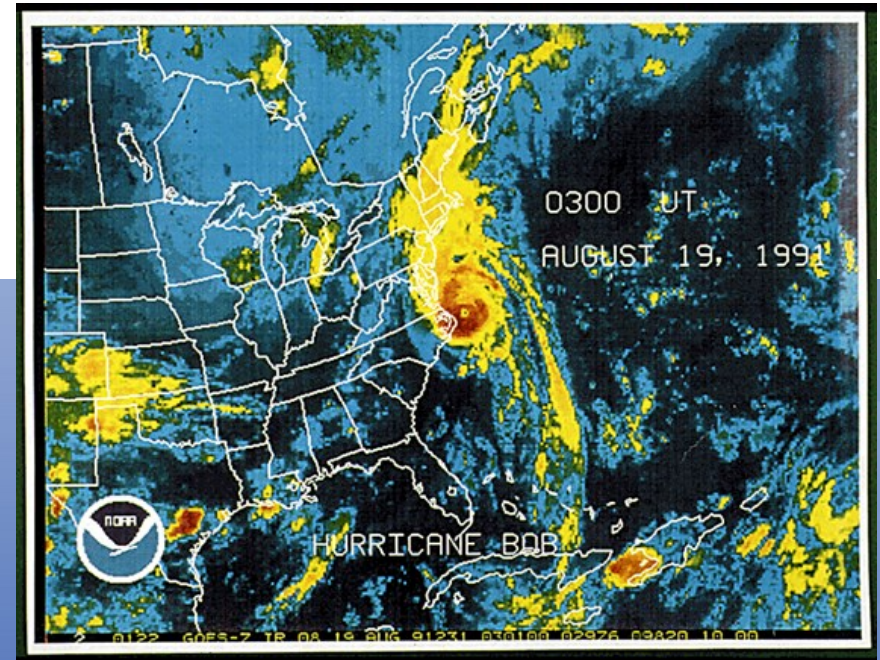
After you have traveled over the Sagamore Bridge, you may exit and go to the North Sagamore, Sagamore Beach, and Bournedale villages. You will not be allowed to travel the Scenic Highway into Buzzards Bay. Motorists wishing to access Route 495 need to travel Route 3 N to Route 44 W (Exit 7). Route 44W will bring you to Route 495.

If you are still on the road attempting to leave the Cape when the bridges close due to weather conditions, and you need shelter, you will be directed to a shelter of last resort. You will be given a safe space to stay until the storm passes. Please note: No weapons are allowed at public shelters.

For more information on the Cape Cod Emergency Traffic Plan, please visit: <https://www.mass.gov/service-details/cape-cod-emergency-traffic-plan>



## CAPE COD EMERGENCY TRAFFIC PLAN





# WHAT IS THE CAPE COD EMERGENCY TRAFFIC PLAN?

The Cape Cod Emergency Traffic Plan (CCETP) facilitates the flow of traffic off of Cape Cod in the event of a hurricane or other potential hazard, particularly during peak tourist season.

The CCETP ensures the orderly but rapid movement of motorists off of Cape Cod by streamlining traffic flow, and provides temporary sheltering of displaced persons unable to exit Cape Cod should the Bourne and Sagamore Bridges need to be closed due to actual or projected high winds and dangerous weather.

## WHAT THE PLAN IS NOT

This is **NOT** an evacuation plan. Local officials may call for evacuations of vulnerable areas of Cape Cod at risk of storm surge inundation and flooding from severe weather events. Although residents in these areas may be ordered to evacuate, many may choose to stay with friends, family members, or access shelters and not leave the Cape.

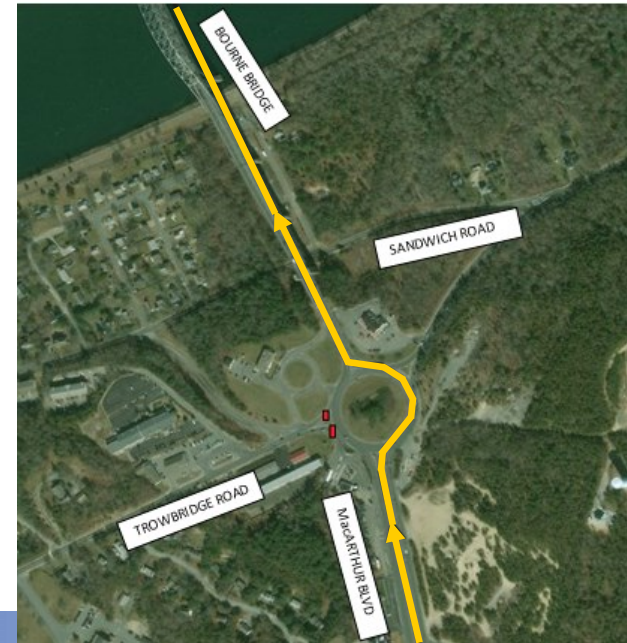
## WHAT YOU CAN EXPECT

There may be temporary road and ramp closures and other changes to normal traffic patterns in order to eliminate causes of congestion and keep traffic flowing, particularly in the areas of the Sagamore and Bourne Bridges.

Public information will be available through sign and message boards on major routes, calling 511 from your cell phone, and the broadcasting of Traffic Advisories on radio station WQRC (99.9 FM).

# BOURNE BRIDGE ACCESS

No access to the Bourne Bridge from Trowbridge Rd, Sandwich Rd, or Veteran's Way. All traffic heading off Cape must approach from Route 28, MacArthur Blvd. Once in the Bourne Rotary, traffic must cross the Bourne Bridge.



## SAGAMORE BRIDGE ACCESS

Only access to cross Sagamore Bridge is via Route 6, Mid Cape Highway from Sandwich. Roadways from South Sagamore Village, (Sandwich Road Cranberry Highway) will be closed for access to Sagamore Bridge.

