

# **Proposals for Off-Leash Dog Recreation Areas**

Within the Southwest Corridor Park

DCR Public Meeting

Thursday, August 2, 2018 – 7:00 p.m. – 8:30 p.m.  
45 Danforth Street - 1st Floor  
Jamaica Plain, 02130



# Commonwealth of Massachusetts

Governor

**Charles D. Baker**

Lieutenant Governor

**Karyn E. Polito**

Energy and Environmental Secretary

**Matthew A. Beaton**

Department of Conservation and Recreation Commissioner

**Leo Roy**



## DCR Mission Statement

To protect, promote and enhance our  
common wealth of natural, cultural  
and recreational resources  
for the well-being of all

**Welcome!**

## **Purpose of the Meeting**

- DCR will present, and obtain feedback on, location possibilities for an off-leash dog recreation area within the Southwest Corridor Park.

## Ongoing DCR Off-Leash Dog Area Initiative

- There is growing need for off-leash dog recreation areas.
- The establishment of these areas requires consideration of natural and cultural resources, other park uses and surrounding neighborhoods.
- DCR is holding a series of public meetings to engage stakeholders, abutters, and park users in dialogue regarding additional off-leash recreation areas.

## Overview/Background

We invite Dog Owners to be Park Users and Park Partners.

Dogs and their owners are welcome in DCR's parks, and we encourage all dog owners and their dogs to be respectful of other park users and neighbors. Join us in the stewardship of our parks by being a responsible dog owner and park partner.



## Overview/Background

DCR welcomes dogs on-leash at most DCR parks, forests, and reservations. However, there is a number of locations where dogs are not allowed, mostly for public safety, public health, or habitat concerns or deed restriction purposes.



## Overview/Background

DCR's new regulations ([302 CMR 12.13 and 302 CMR 12.17\(5\)](#)) were effective October 24, 2014 and include the designation of appropriate "off-leash" areas and call for a permit process for commercial dog walkers.

More information at:

<http://www.mass.gov/eea/agencies/dcr/massparks/recreational-activities/dogs-in-massparks.html> and general info on program.  
URL



## Benefits of Off-Leash Dog Recreational Areas

- Create public spaces for dog owners to recreate with their dogs off-leash
- Dogs learn to socialize/play with other dogs
- Foster community and new friendships
- Create safer parks/neighborhoods, more recreation areas
- Increase dog owner investment in parks

# BETA Group, Inc.

## The Design Consultant for the Project

Expertise in Landscape Architecture

Relevant Experience in:

- ü Public Projects

- ü Trail Design

- ü Park Design

- ü Dog Park Design

- ü Projects in Resource Areas

- ü Interpretive and Wayfinding Design

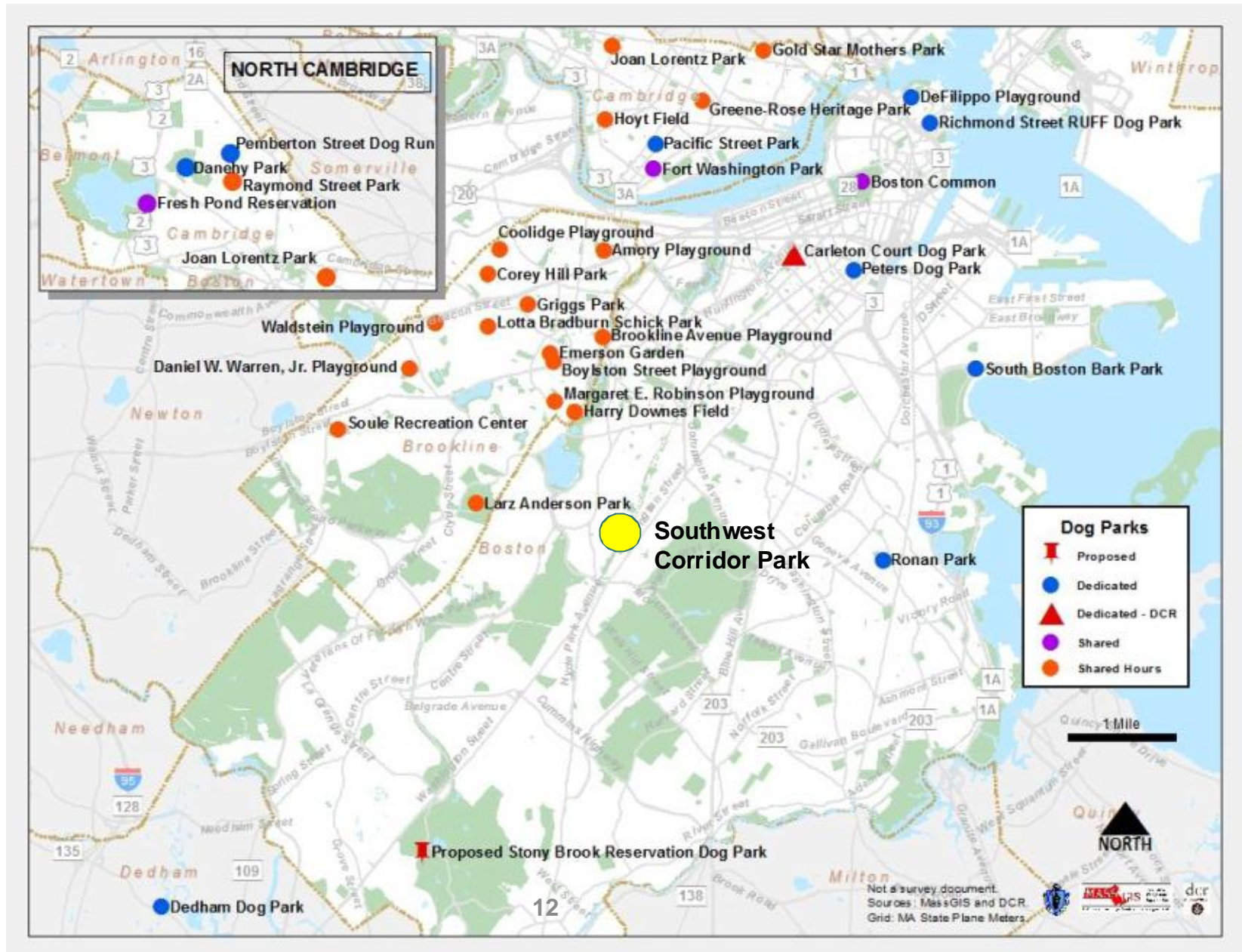
## **Today's Presentation**

1. Maps
  - Existing Dog Park Facilities
  - Southwest Corridor Areas
2. Site/Location Analysis (3 Areas)
  - Existing Site Features
  - Surrounding Site Features
  - Safety
  - Utilities
  - Use Diagrams
3. Implementation Considerations
  - Urban Dog Park Images
  - Regulatory and Operations



MASSACHUSETTS DEPARTMENT OF  
CONSERVATION AND RECREATION

# Regional Dog Parks









## Site selection criteria for dog park locations:

### 1. Existing Site Features

- Square footage
- Grades/slope
- Circulation/access
- Shade trees/plantings
- Walls, fences, other

### 2. Surrounding Site Features

- Roadways
- Other park areas
- MBTA, on street parking
- Buildings: residences, commercial (coffee shop) institutional, other

### 3. Safety

- Visibility
- Primary Roadway

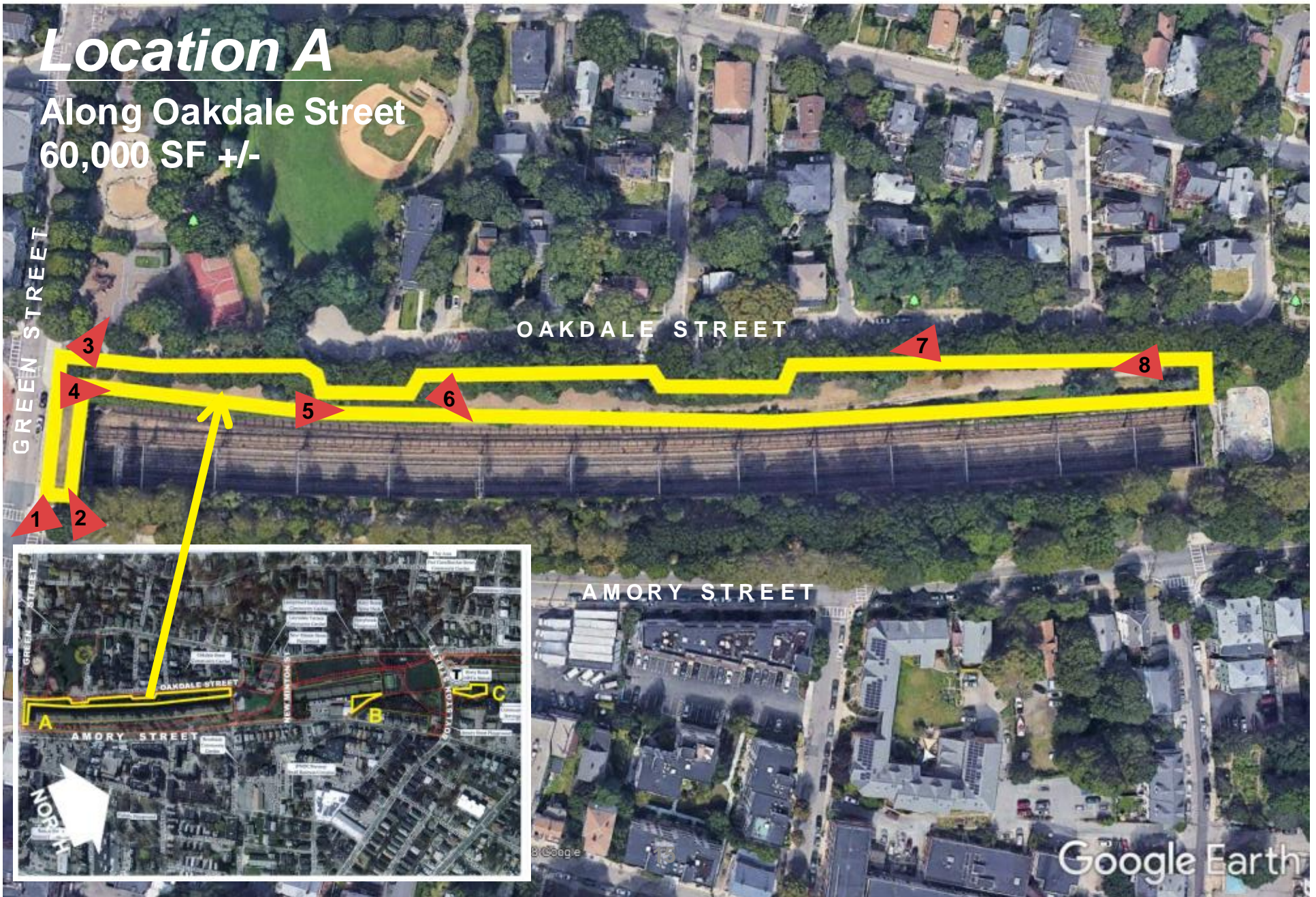
### 4. Utilities and Maintenance

- Lighting
- Drainage structures
- Possible water sources



# Location A

Along Oakdale Street  
60,000 SF +/-





# Location A Views

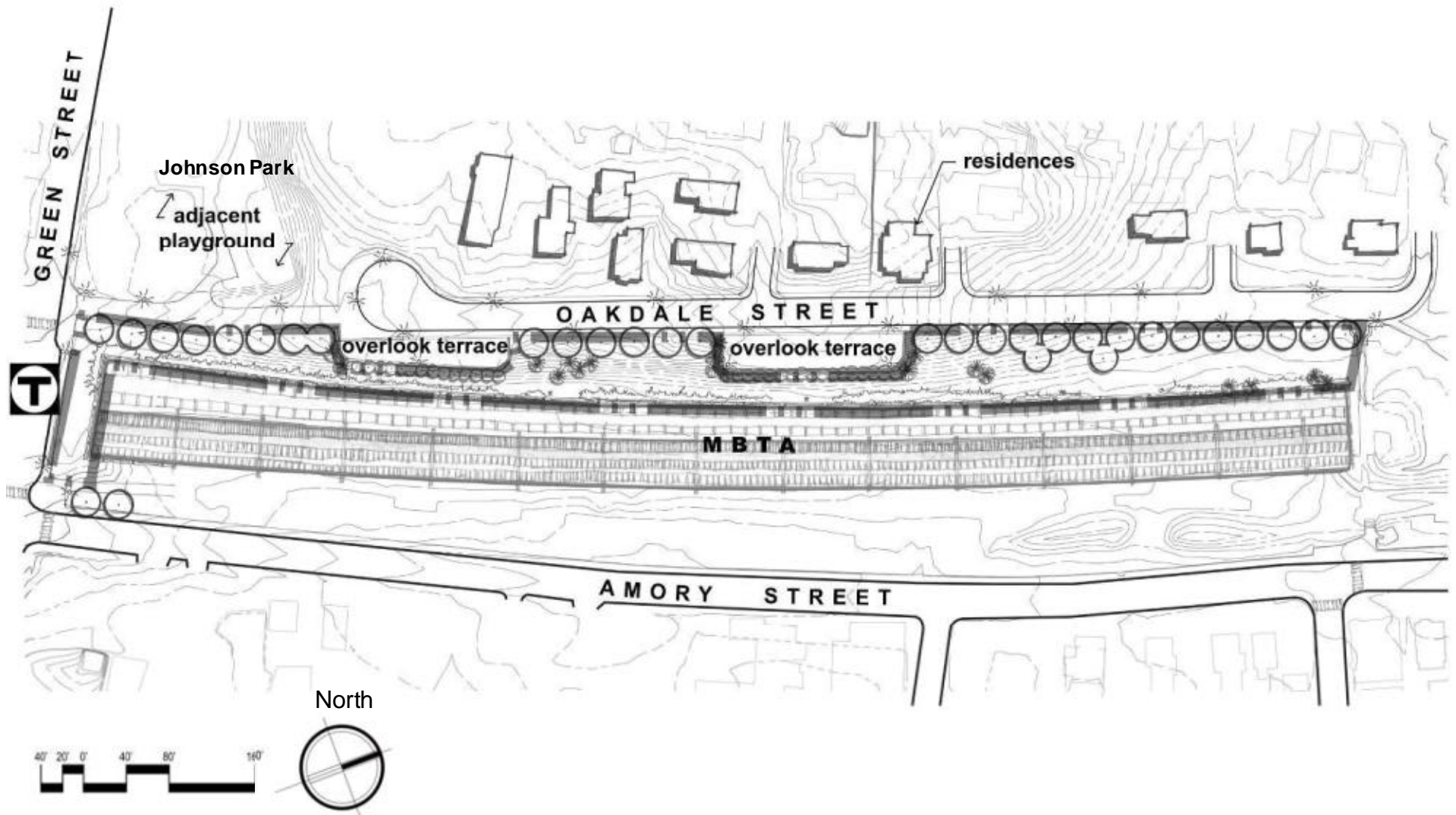




## Location A Views

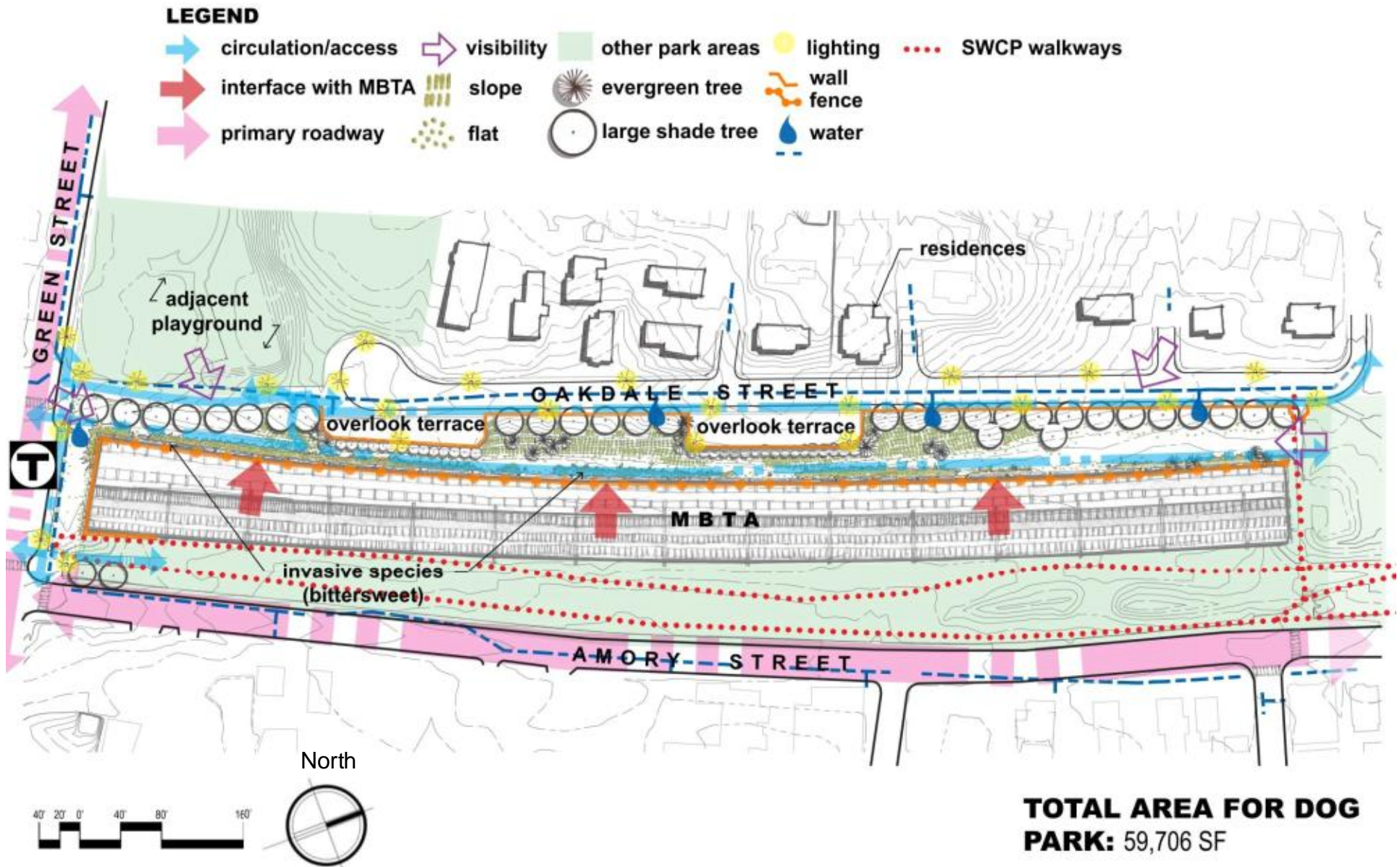






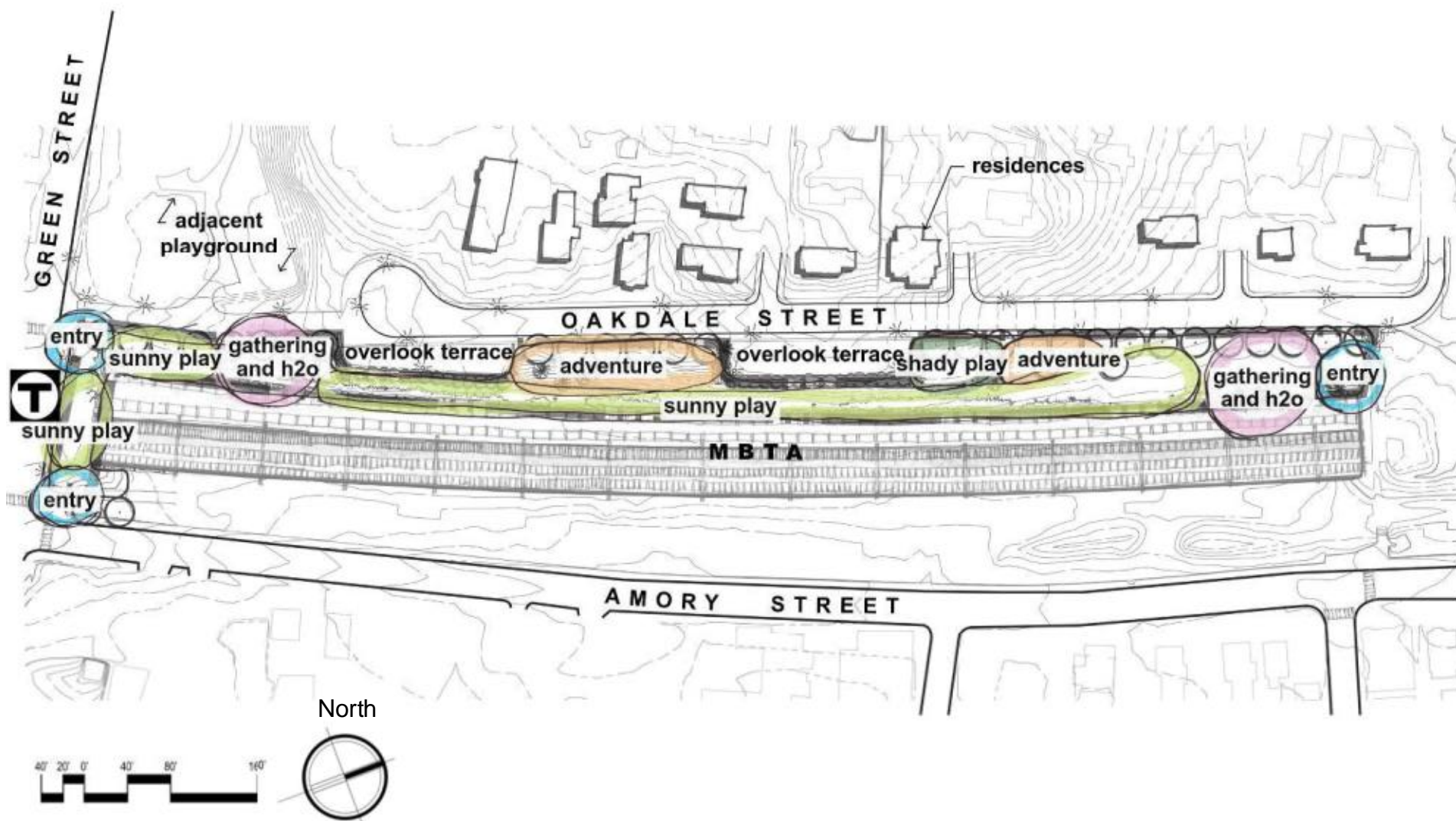
## Site Inventory & Analysis: Existing Conditions

### Location A



## Site Inventory & Analysis: Evaluation Location A





## Site Inventory & Analysis: Use areas

### Location A



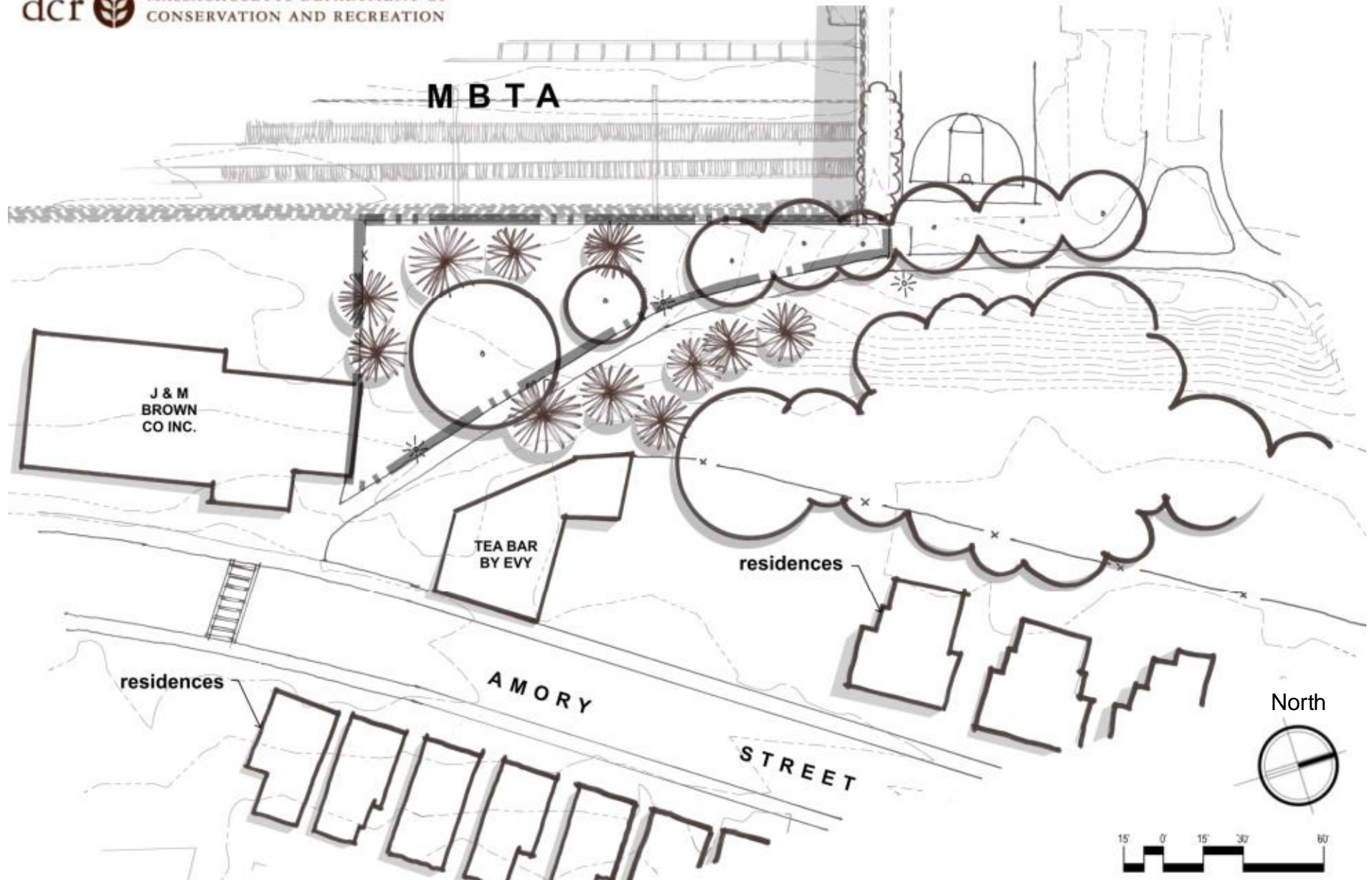
**253 Amory Street**  
**9,000 SF +/-**









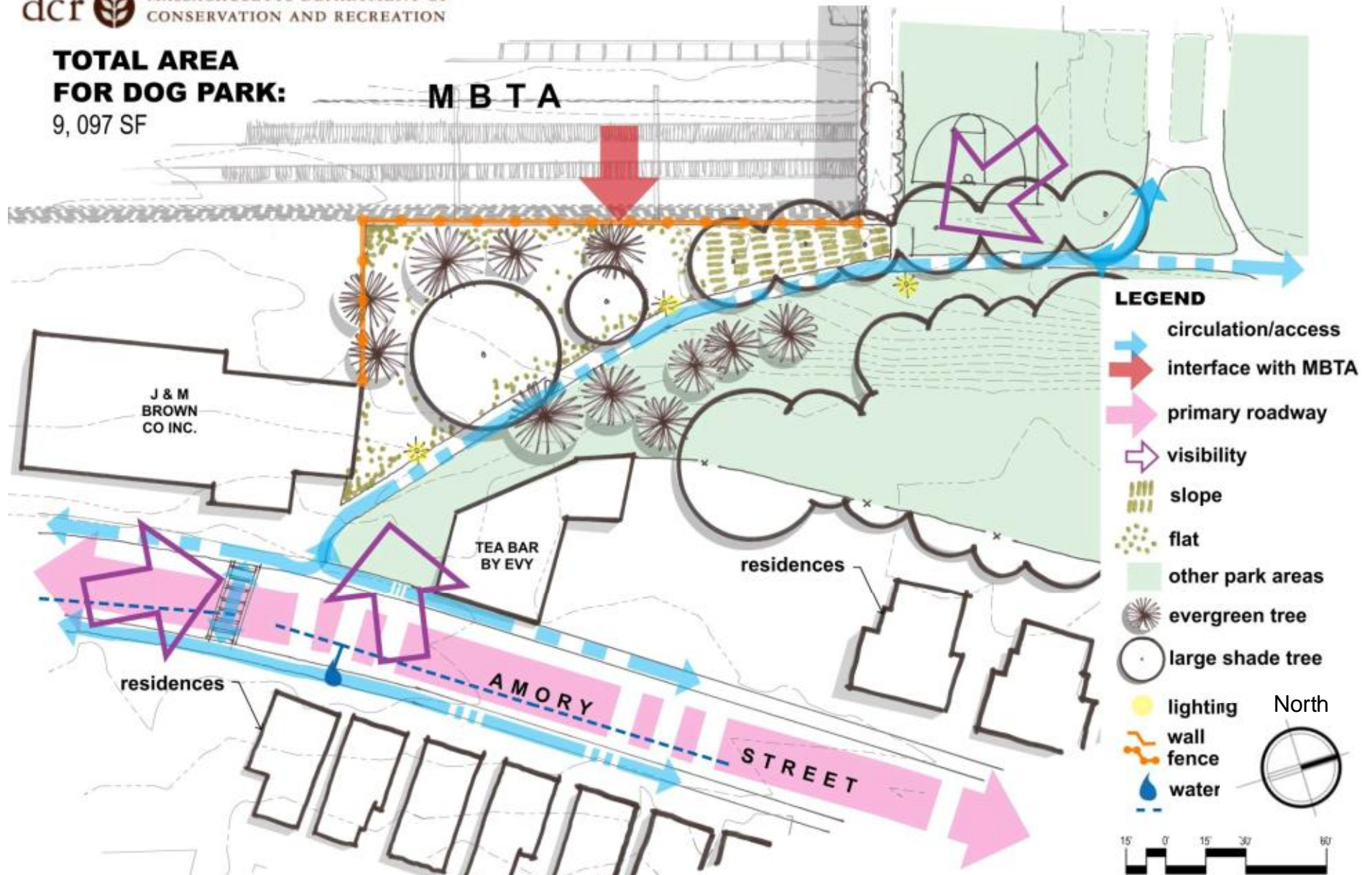


## Site Inventory & Analysis: Existing Conditions

### Location B

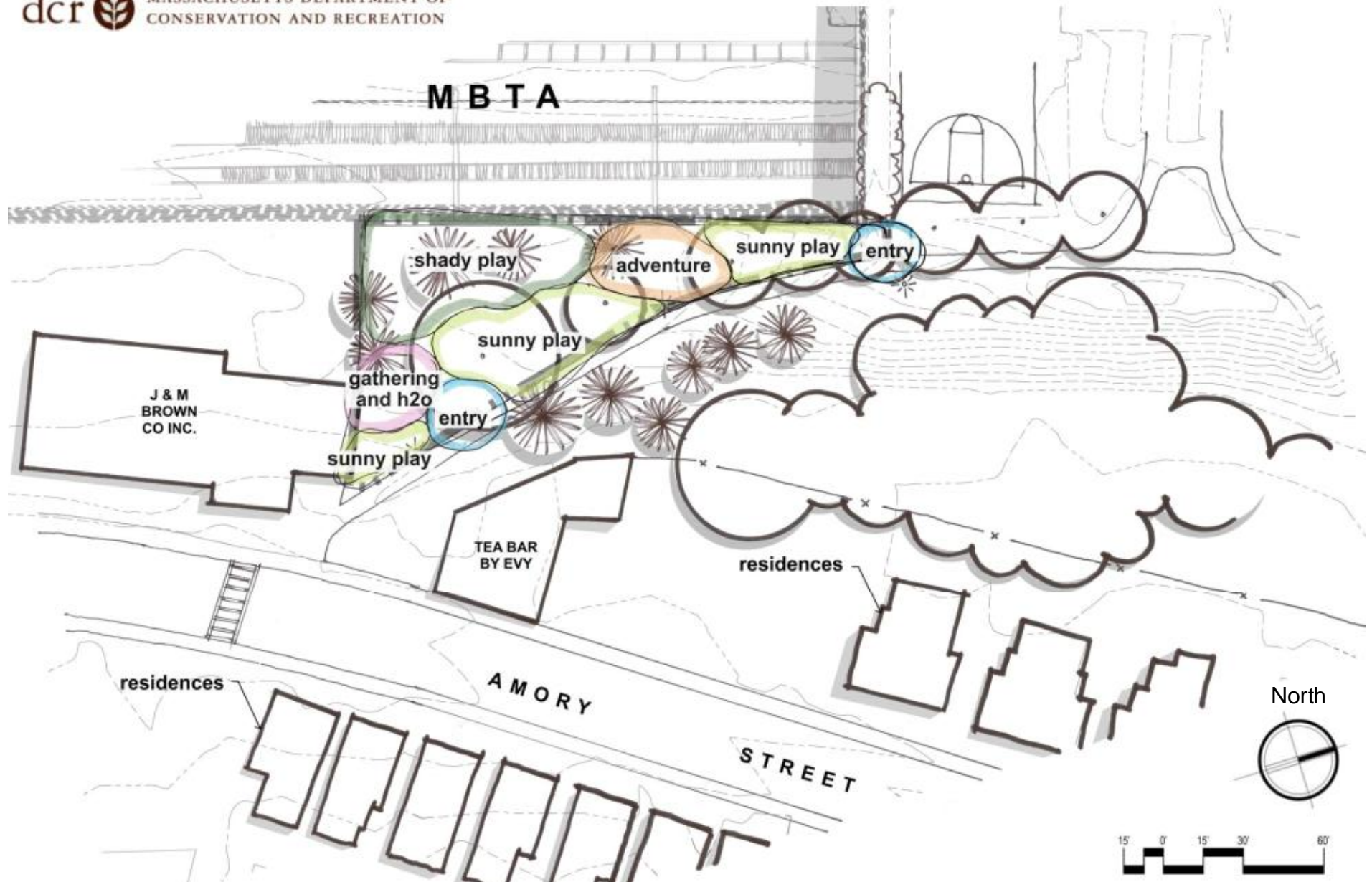
**TOTAL AREA  
FOR DOG PARK:**

9,097 SF



Site Inventory & Analysis: Evaluation  
Location B





## Site Inventory & Analysis: Use Areas

### Location B



## Location C

122 Boylston Street  
10,000 SF +/-

BOYLSTON STREET

4

2

3

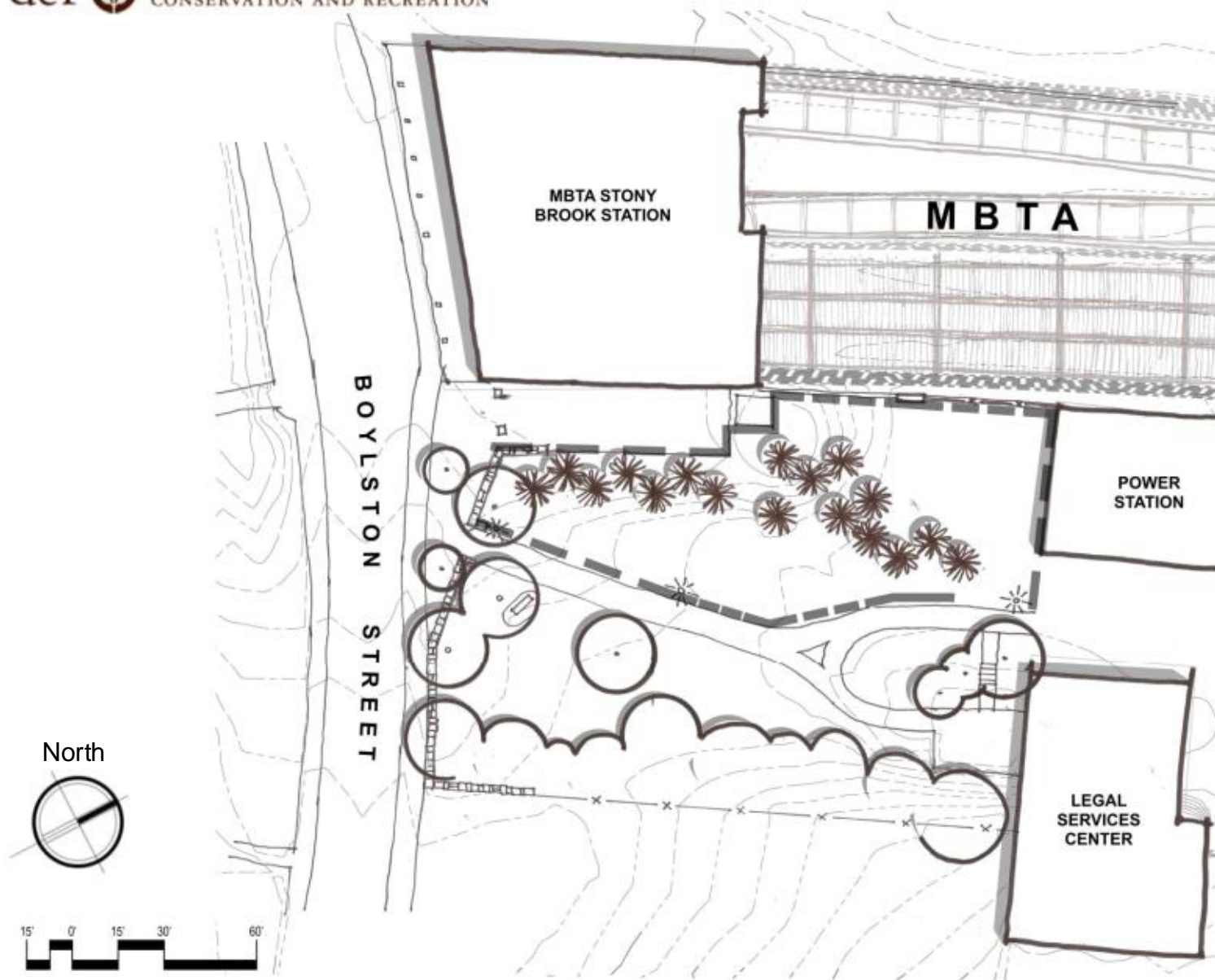
1





# Location C Views

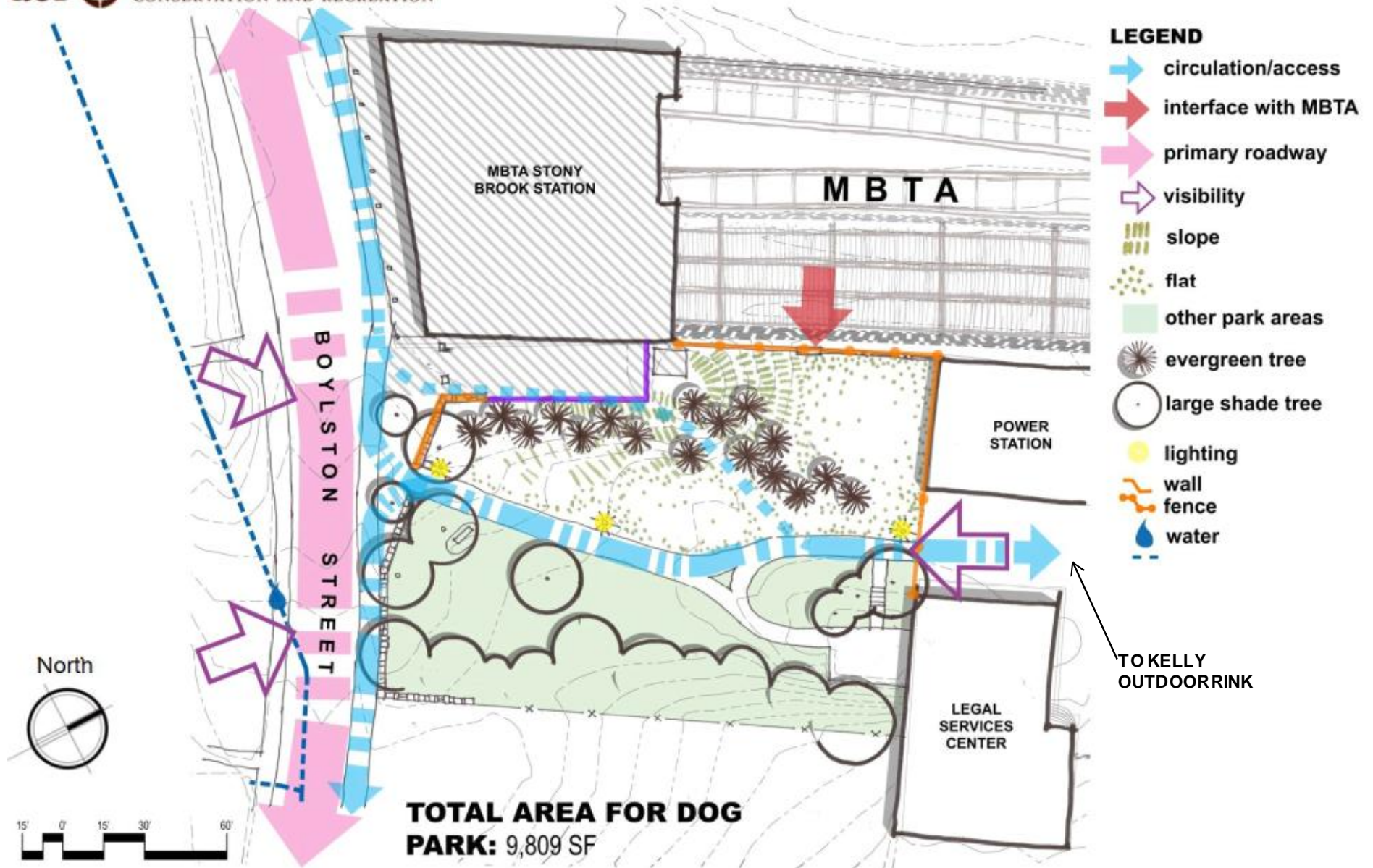




## Site Inventory & Analysis: Existing Conditions

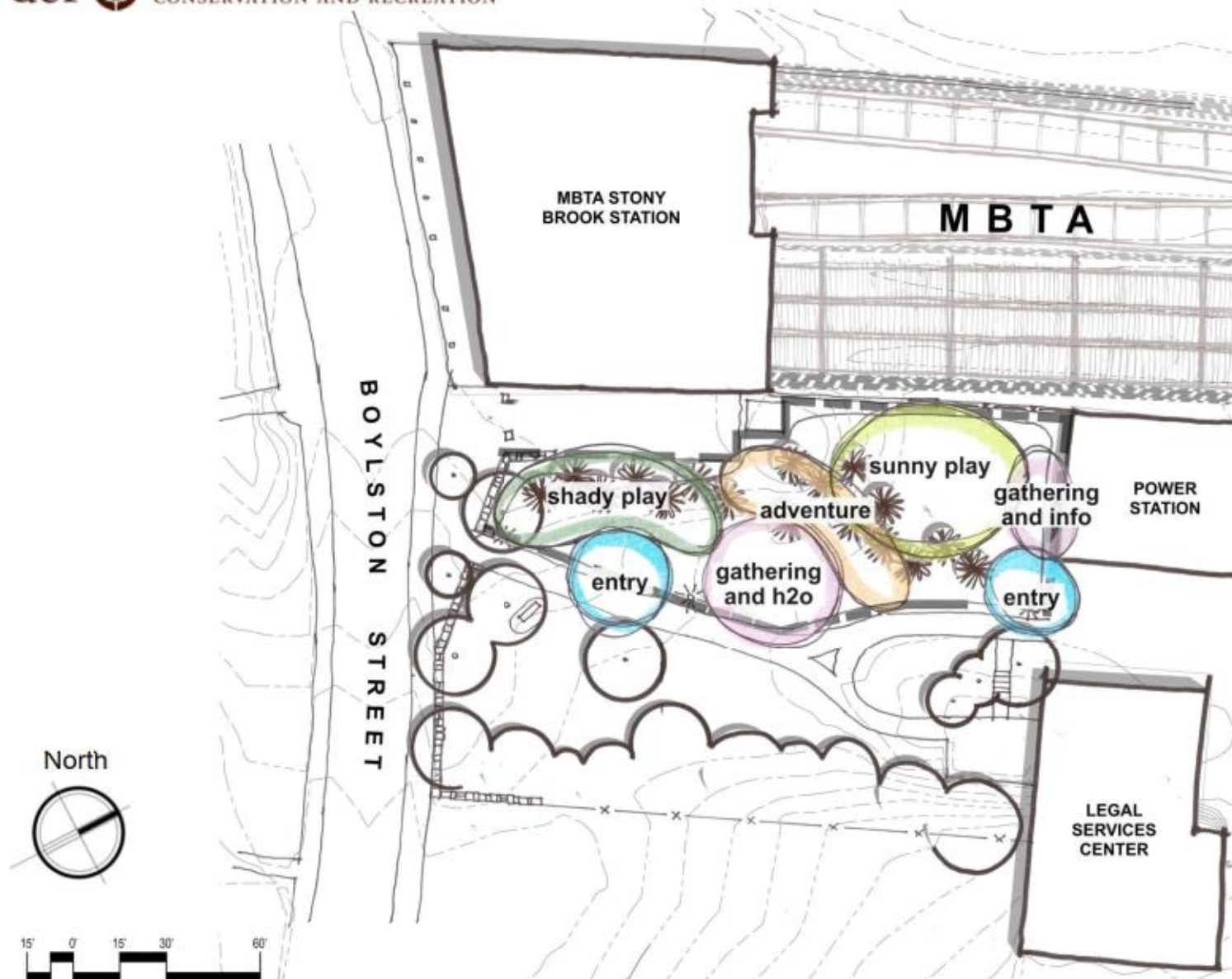
### Location C





Site Inventory & Analysis: Use Areas

Location C



## Site Inventory & Analysis: Use Areas

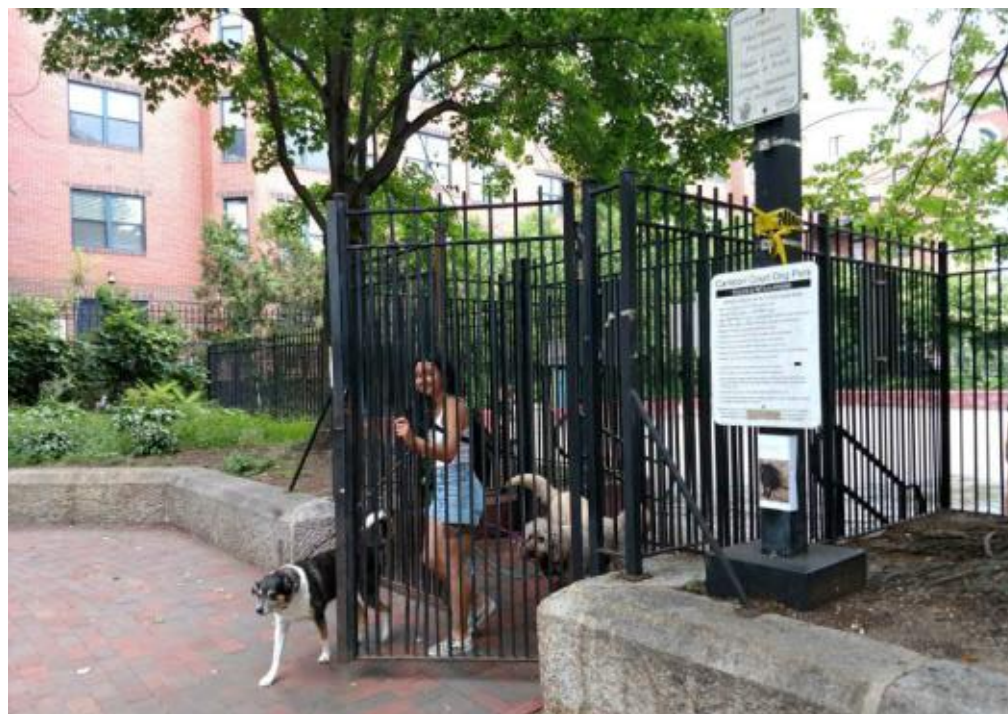
### Location C

## Urban Dog Park Elements

- Enclosure and Entry
- Surfacing
- Signage
- Dog Amenities
- People Amenities
- Types of Uses



## Images for an Urban Dog Park: Enclosure and Entry



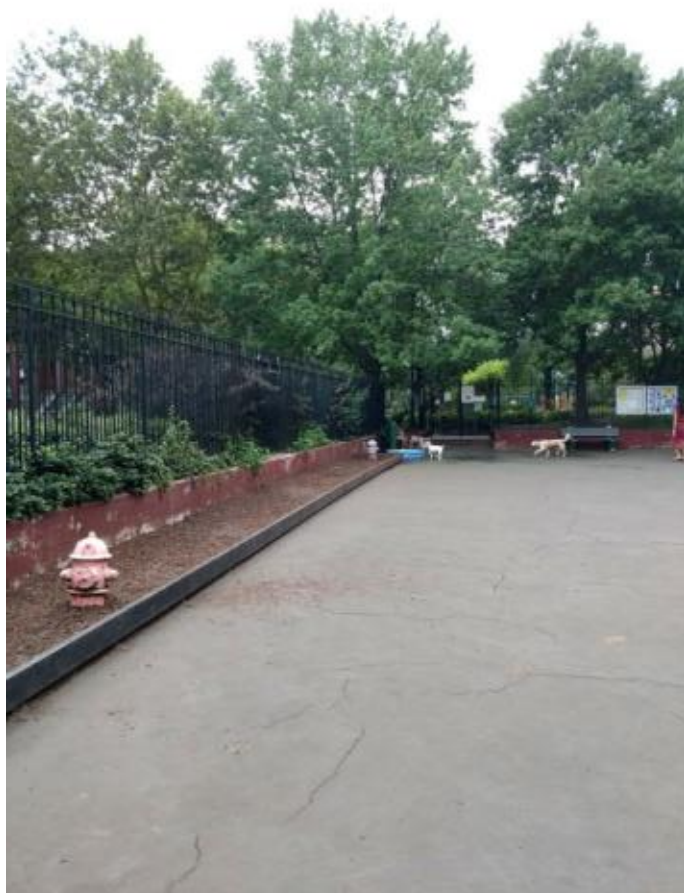


## Images for an Urban Dog Park: Enclosure and Entry





## Images for an Urban Dog Park: Surfacing





## Images for an Urban Dog Park: Surfacing





## Images for an Urban Dog Park: Wayfinding and Signage





# Images for an Urban Dog Park: Posting of Rules





## Images for an Urban Dog Park: Dog Amenities



BALANCE  
BEAM LOG





## Images for an Urban Dog Park: People Amenities





## Images for an Urban Dog Park: Uses





## Images for an Urban Dog Park: Uses



## Implementation Considerations

### Regulatory and Operations

Current regulations link to CMR ([302 CMR 12.13 and 302 CMR 12.17\(5\)](#))

- Enforcement ( DCR Rangers, State police, local animal control officers)
- Commercial dog walker permit



## Commercial Dog Walker Permits

- DCR has a Commercial Dog Walkers Permit
- \$100 annual fee for up to four dogs
- \$200 annual fee for up to eight dogs
- No more than eight dogs allowed per permit/walker
- One time application fee of \$35.00

## How Friends Groups can support Dog Parks:

- Educate – Off-Leash Training Sessions
- Perform Community Outreach – “Meet and Greet” events
- Carry out Volunteer Activities – Support for upkeep and maintenance
- Fund-raise
- Support DCR in seeking Sponsorships
  
- Contact Jenny Norwood, Director of External Affairs and Partnerships 617-626-1164



## Next Steps/Timetable

- Public comment period (August 2 to August 23, 2018)
- Review of public comments
- Assess community support for this site

## Q&A/Discussion



## Additional Information

For more information:

<http://www.mass.gov/dcr/past-public-meetings>.

If you have comments or suggestions on this project:

*Submit online:*

<http://www.mass.gov/eea/agencies/dcr/public-outreach/submit-public-comments/>

*Write:* Department of Conservation and Recreation  
Office of Public Outreach  
251 Causeway Street, Suite 600  
Boston, MA 02114

*Deadline: Thursday, August 23, 2018*

*Note: Public comments submitted to DCR may be posted on the DCR website in their entirety.*

If you wish to subscribe to a DCR general information or project-related listserv: contact DCR's Office of Community Relations at 617-626-4973 or [Mass.Parks@state.ma.us](mailto:Mass.Parks@state.ma.us).