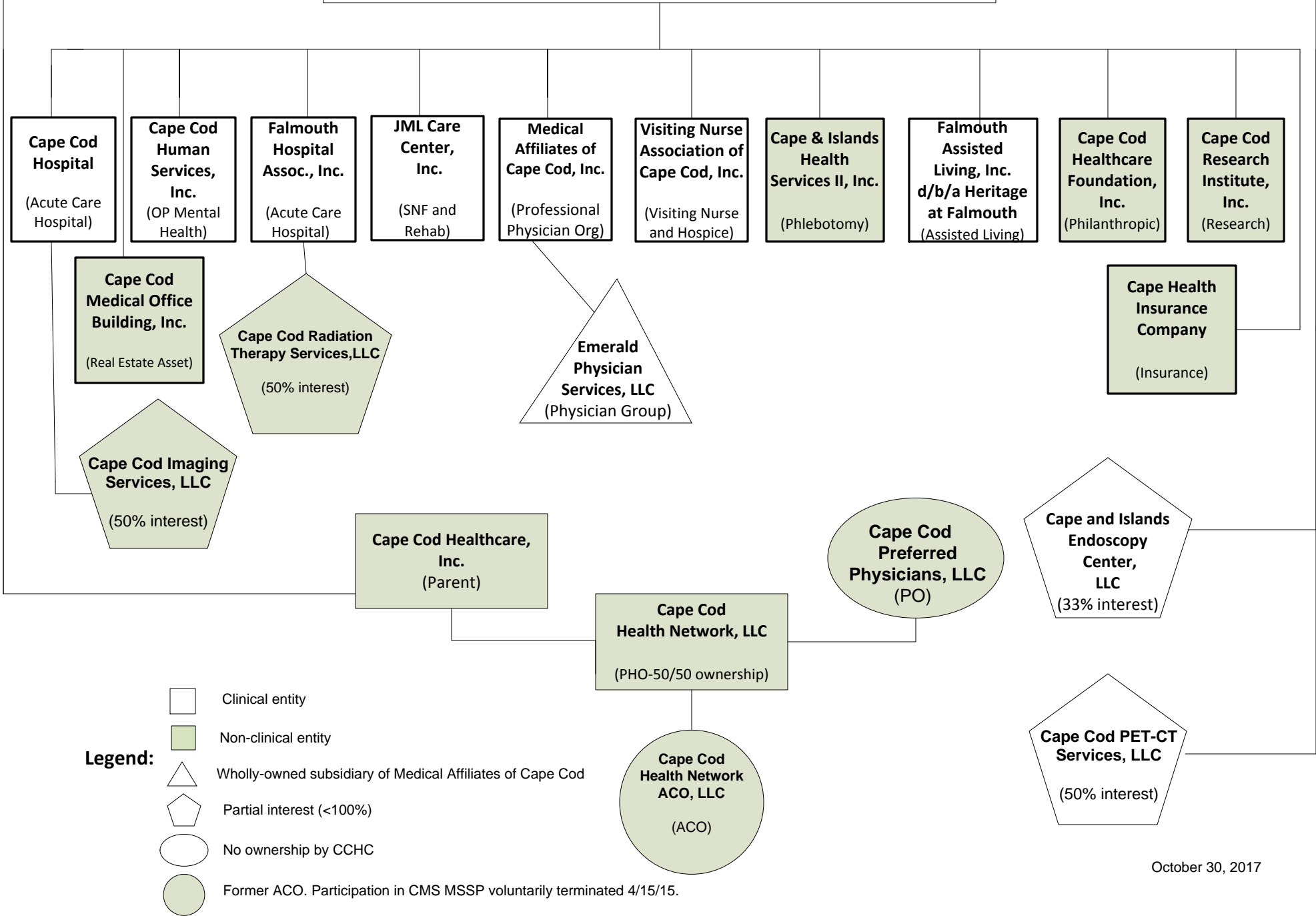


**CAPE COD HEALTHCARE, INC.
(Parent)**



- Legend:**
- Clinical entity
 - Non-clinical entity
 - Wholly-owned subsidiary of Medical Affiliates of Cape Cod
 - Partial interest (<100%)
 - No ownership by CCHC
 - Former ACO. Participation in CMS MSSP voluntarily terminated 4/15/15.