



**Kelley Square**

**Improvement Project**

**Worcester | Project File No. 609226**

**PUBLIC WORKSHOP**

**White Room - Crompton Collective**

**Oct 10, 2018 | 6:00 pm**

# Presenters & Facilitators

## Mass DOT

- John Bechard
- Muazzez Reardon
- Barry Lorion
- Tom Emerick
- James Robida
- Arthur Frost
- Joe Frawley

## VHB

- Don Cooke
- Tracie Lenhardt
- Erin Thompson
- Scott Brunner

## RVA

- Kate Barrett
- Amanda Poggenburg
- Emily Christin

# Project Area



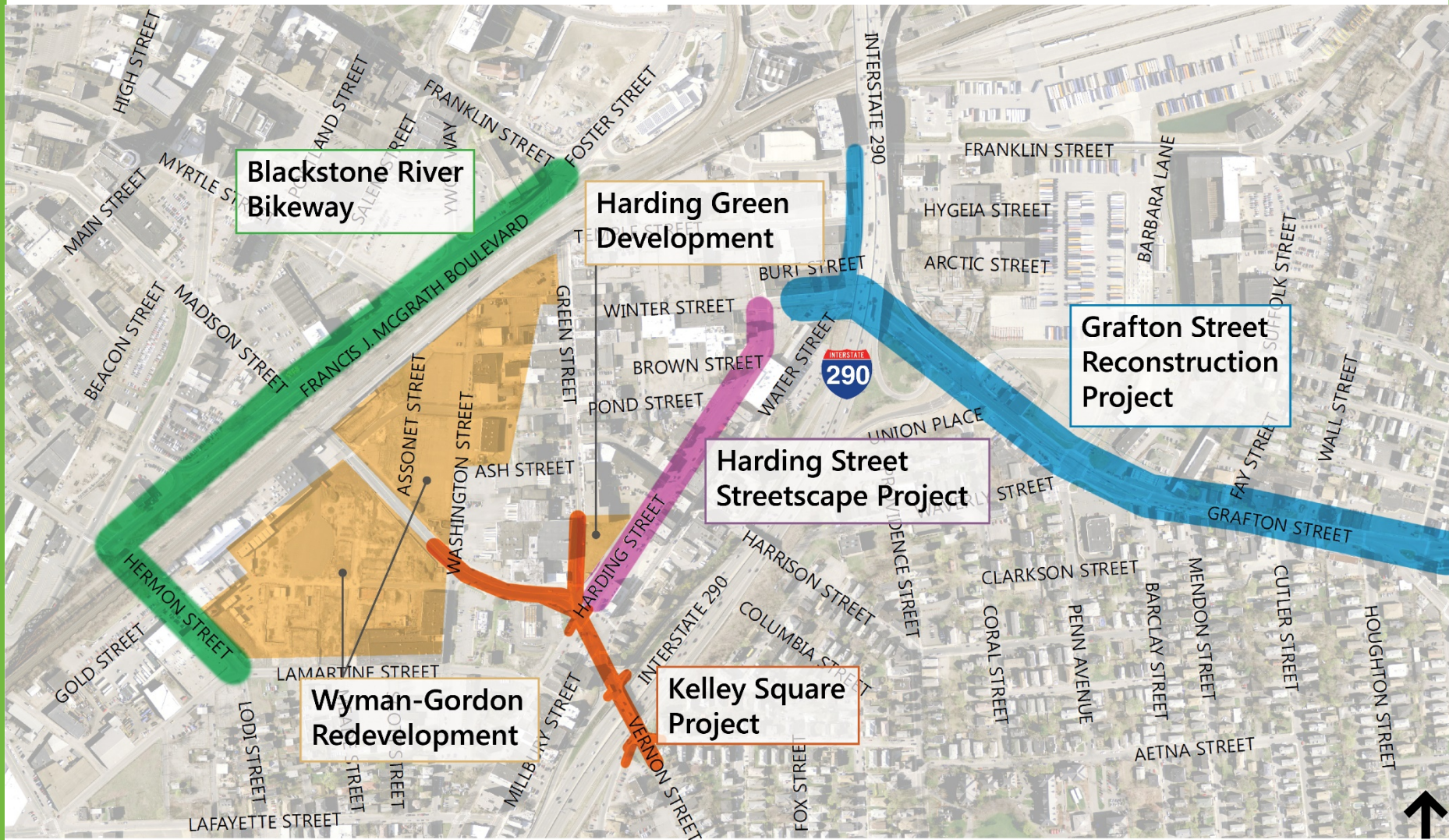
# Project Need and Goals

- Safety issues for pedestrians, bicyclists and motor vehicles
  - Highest crash location in the Commonwealth
  - Improve ADA / Accessibility
- Manage a complex network of roads located in a vibrant and growing neighborhood
  - Comprised of a series of unsignalized intersections including Madison, Green, Harding, Water, Millbury and Vernon Streets.
  - I-290 ramp intersections with Vernon Street adds to the congestion and the complexity of traffic flow

**The purpose of the project is to  
improve safety for all users**



# Other Projects



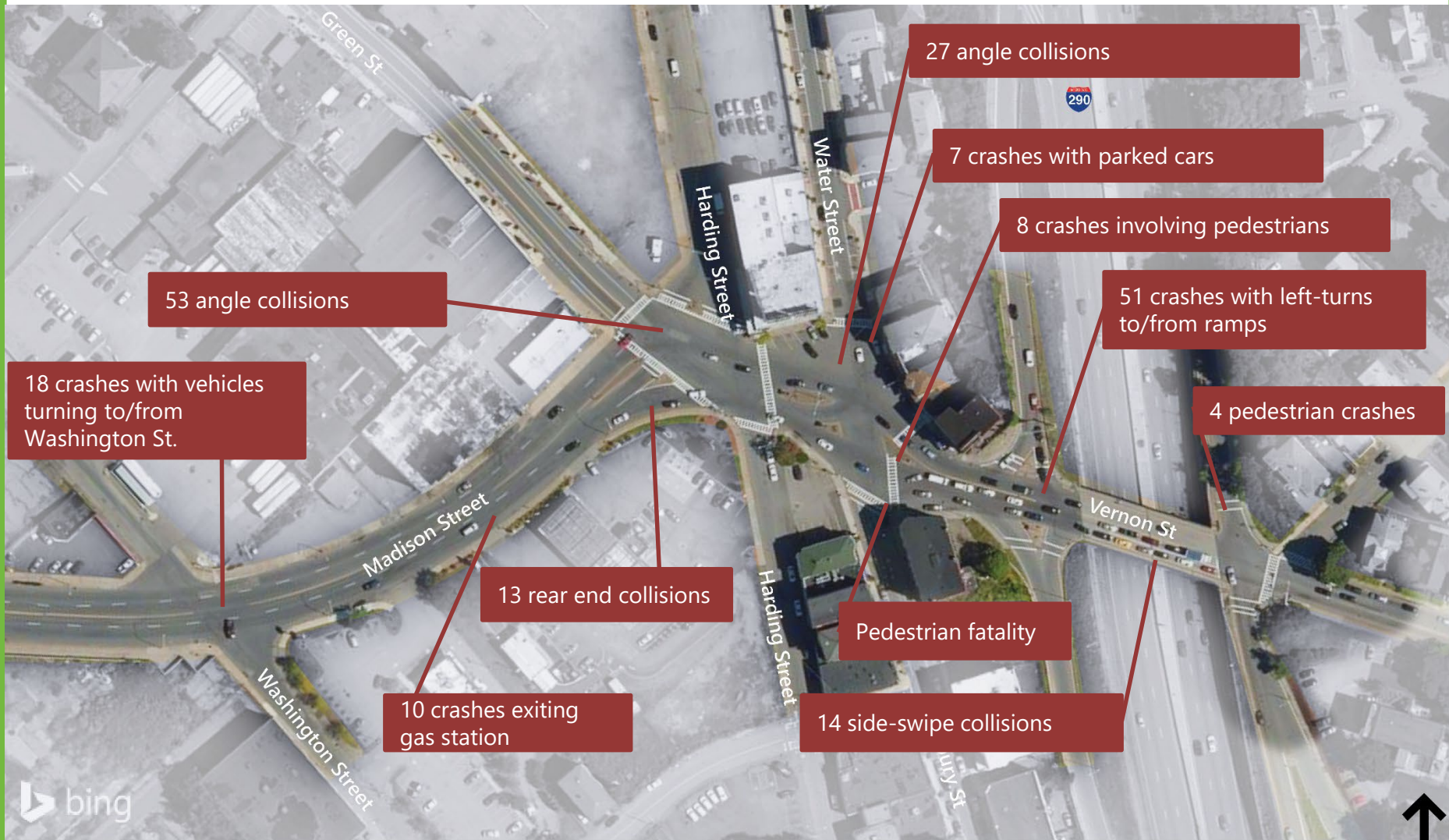
# Crash Summary (2013 – 2016)

Collision Type	Madison St. Washington to Green	Kelley Square	I-290 Interchange	Other	Total
Angle	49	80	61	0	190
Head-On	0	0	0	1	1
Rear-End	13	49	32	0	94
Sideswipe (Opp. Direct.)	3	1	4	0	8
Sideswipe (Same Direct.)	6	27	34	0	67
Single Vehicle	6	25	12	0	43
Non Motorist (Bike/Pedestrian)	4	13	5	0	22*
<b>Total</b>	81	195	148	1	<b>403</b>

\* The non-motorist crashes are also accounted for in the crash totals.

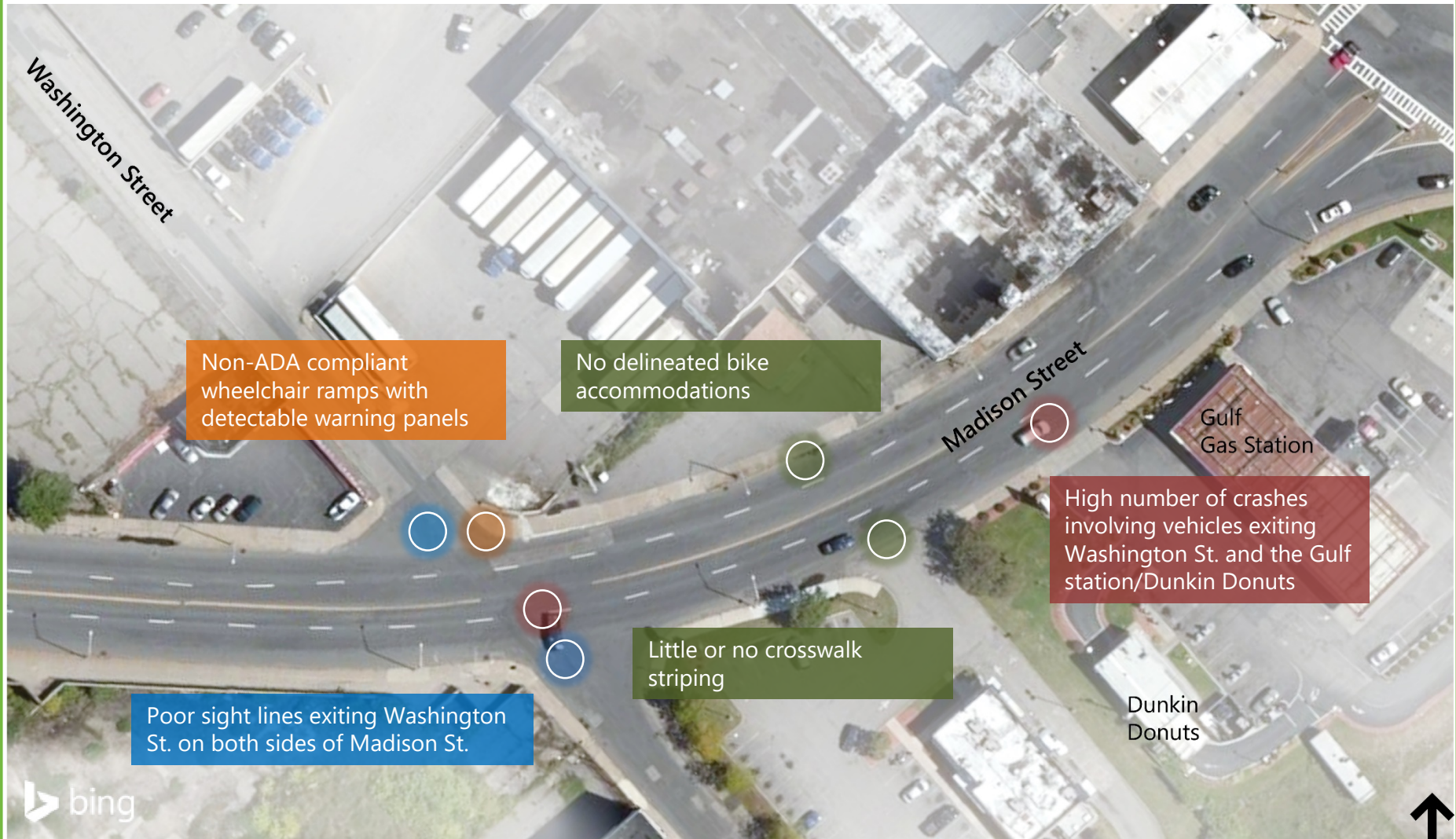


# Crash locations



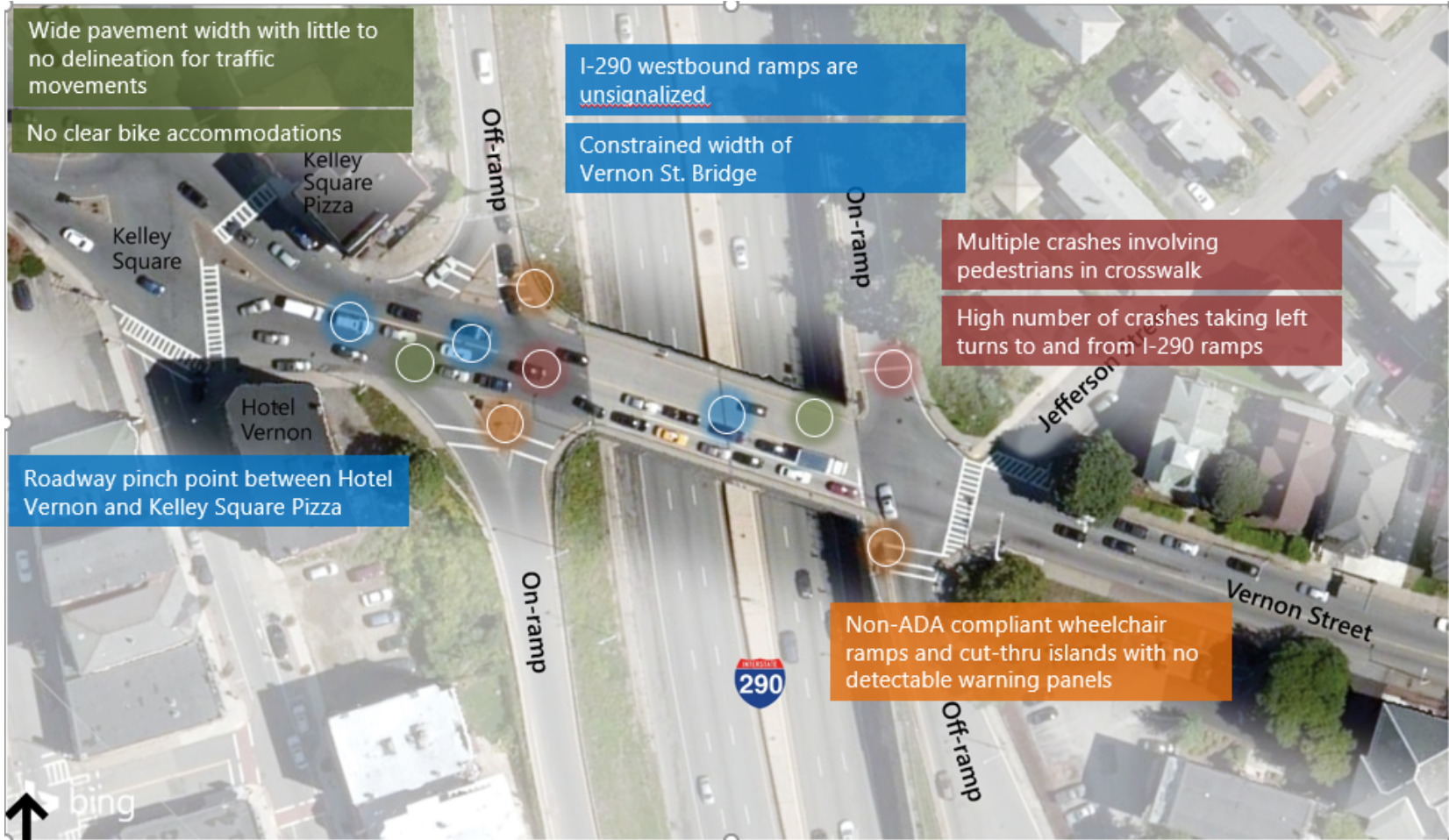


# Existing Issues

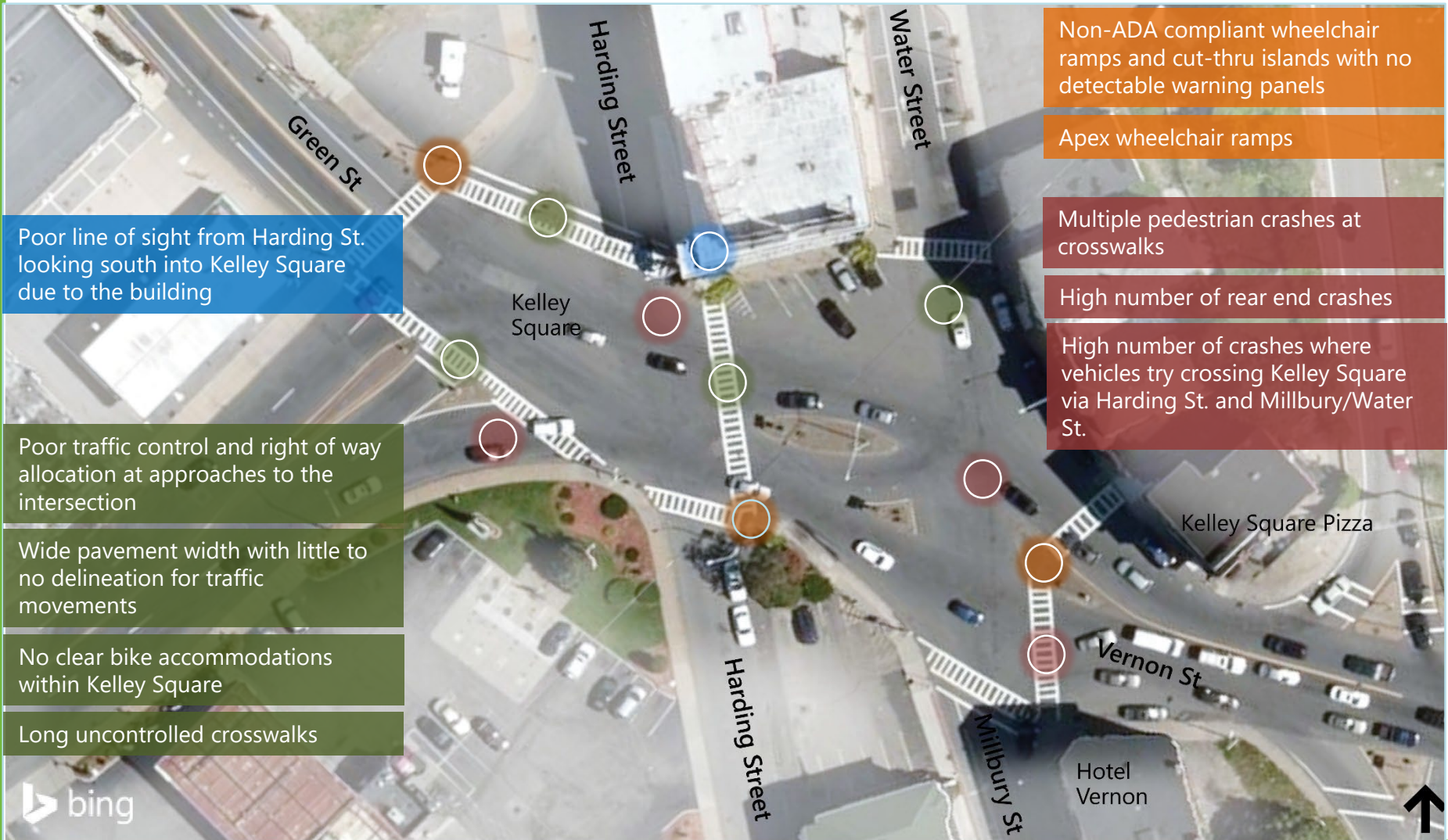




# Existing Issues



# Existing Issues



Poor line of sight from Harding St. looking south into Kelley Square due to the building

Poor traffic control and right of way allocation at approaches to the intersection

Wide pavement width with little to no delineation for traffic movements

No clear bike accommodations within Kelley Square

Long uncontrolled crosswalks

Non-ADA compliant wheelchair ramps and cut-thru islands with no detectable warning panels

Apex wheelchair ramps

Multiple pedestrian crashes at crosswalks

High number of rear end crashes

High number of crashes where vehicles try crossing Kelley Square via Harding St. and Millbury/Water St.



# Daily Volumes

\* Estimated from evening peak hour traffic volume

vph (AM)  
vph (PM)



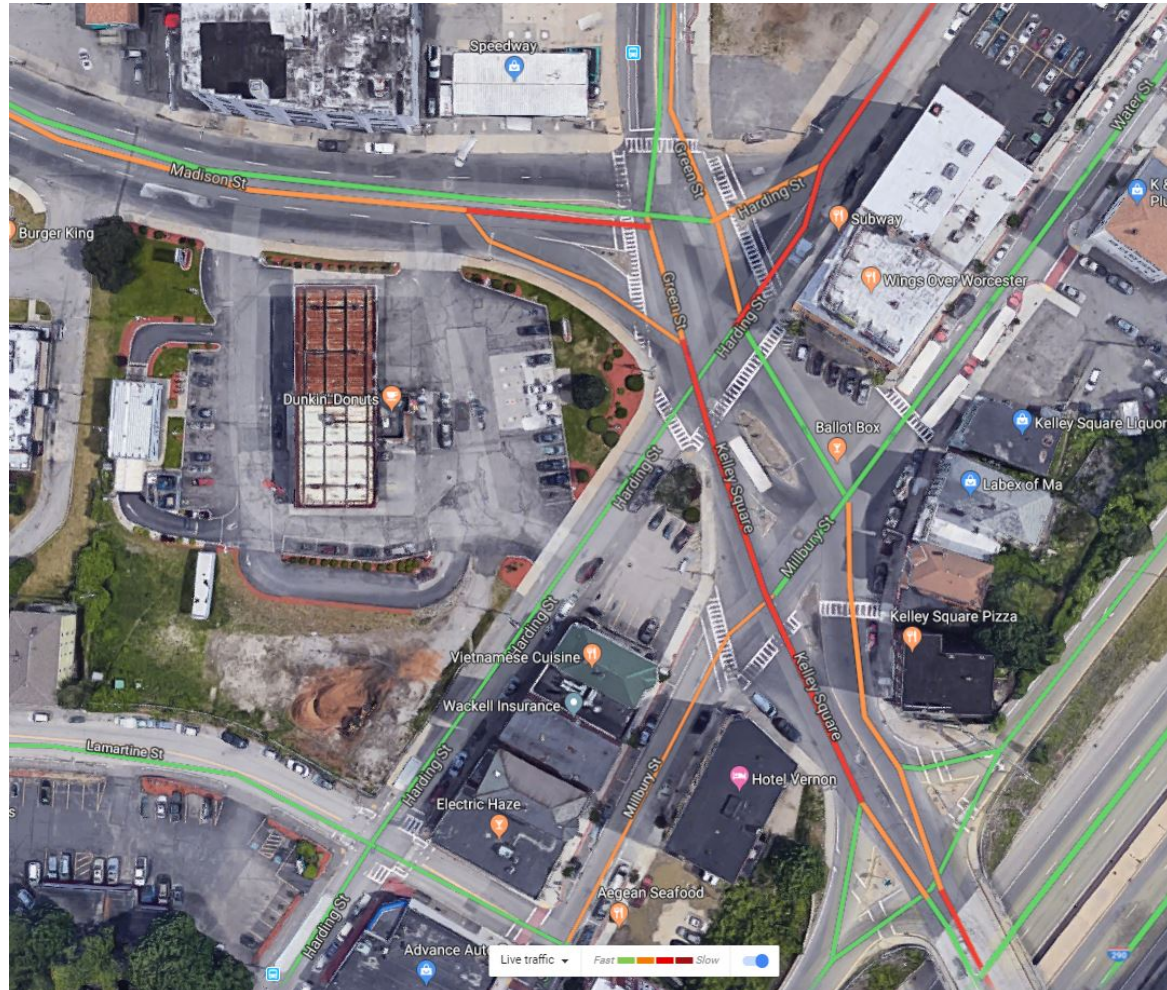
# Kelley Square Traffic AM



Source: Google Maps Traffic screen capture, October 10, 2018



# Kelley Square Traffic PM



Source: Google Maps Traffic screen capture, October 3, 2018

# Potential Improvement Alternatives

- Signalization
- Unsignalized with Geometric Improvements
- Roundabout(s)
- Potential change in directionality of streets

Not included in this project:

- Pedestrian/Bike bridges or tunnels
- Vernon St Bridge modifications



# Outreach

- Previous Outreach
  - Canal District Farmers Market – Sept 8, 2018
  - stART on the Street – Sept 16, 2018
  - Green Island Neighborhood Alliance Meeting – Oct 2, 2018
- Additional community/business meetings to come
  - MassDOT 2<sup>nd</sup> Public Workshop – Oct 24, 2018
  - MassDOT Public Information Meeting – Nov 15, 2018

# Project Schedule

25% Design Submittal  
Jan 2019

100% Design Submittal  
May 2019

Design Public Hearing  
February/March 2019

Construction Starts  
Oct 2019





- Mail-in comment sheets
- Project Email Address: [kelleysqproj.worcester@dot.state.ma.us](mailto:kelleysqproj.worcester@dot.state.ma.us)
- Project website:  
<https://www.mass.gov/worcester-kelley-square-improvement-project>



# Thank You

*Next Meeting:  
October 24, 2018*

## PUBLIC WORKSHOP

White Room - Crompton Collective  
Oct 10, 2018 | 6:00 pm