



Chebacco Lake, Hamilton/Essex

General Information

Chebacco Lake is a 213- acre great pond with a maximum depth of 30 feet and an average depth of 10 feet. Water is transparent to about 6 feet. The shoreline is highly developed, limiting bank access to mostly the southern shore.

Recreational Access

Public access is provided by a Public Access Board paved ramp off of Chebacco Road (70°48'39.33"W 42°36'15.85"N). The ramp is managed by DCR and is suitable for launching cartop boats and light trailered craft. There is parking space for approximately 15 vehicles. Please contact MA DCR for additional information, fee structure, and/or restrictions pertaining to public access of Chebacco Lake.

Fish Populations

The following fish species were found during MassWildlife surveys: Largemouth Bass, Brown Bullhead, Yellow Perch, Chain Pickerel, Black Crappie, White Perch and Pumpkinseed. This lake supports an Alewife run, which provides abundant forage for many of the species present.

Fishing

There is substantial boat traffic on this lake due to its heavy usage by shoreline residents. However, thanks to numerous coves and heavy shoreline weed growth, fishermen can usually find a selection of secluded, relatively quiet areas to pursue Largemouths and panfish. Ice fishing should also be productive. Chebacco Lake has produced Largemouth Bass Chain Pickerel, Black Crappie, and White Catfish that meet the minimum size for recognition by the Freshwater Sportfishing Awards Program.

Useful Links:

[Get your Fishing License](#)

[Freshwater Fishing](#)

[Trout Stocking Information](#)

[Freshwater Sportfishing Awards Program](#)

Learn more:

Mass.gov/MassWildlife

Connect with us:

Facebook.com/MassWildlife

Your local

MassWildlife office:

85 Fitchburg Road
Ayer, MA 01432
(978) 772-2145

STOP AQUATIC HITCHIKERS!

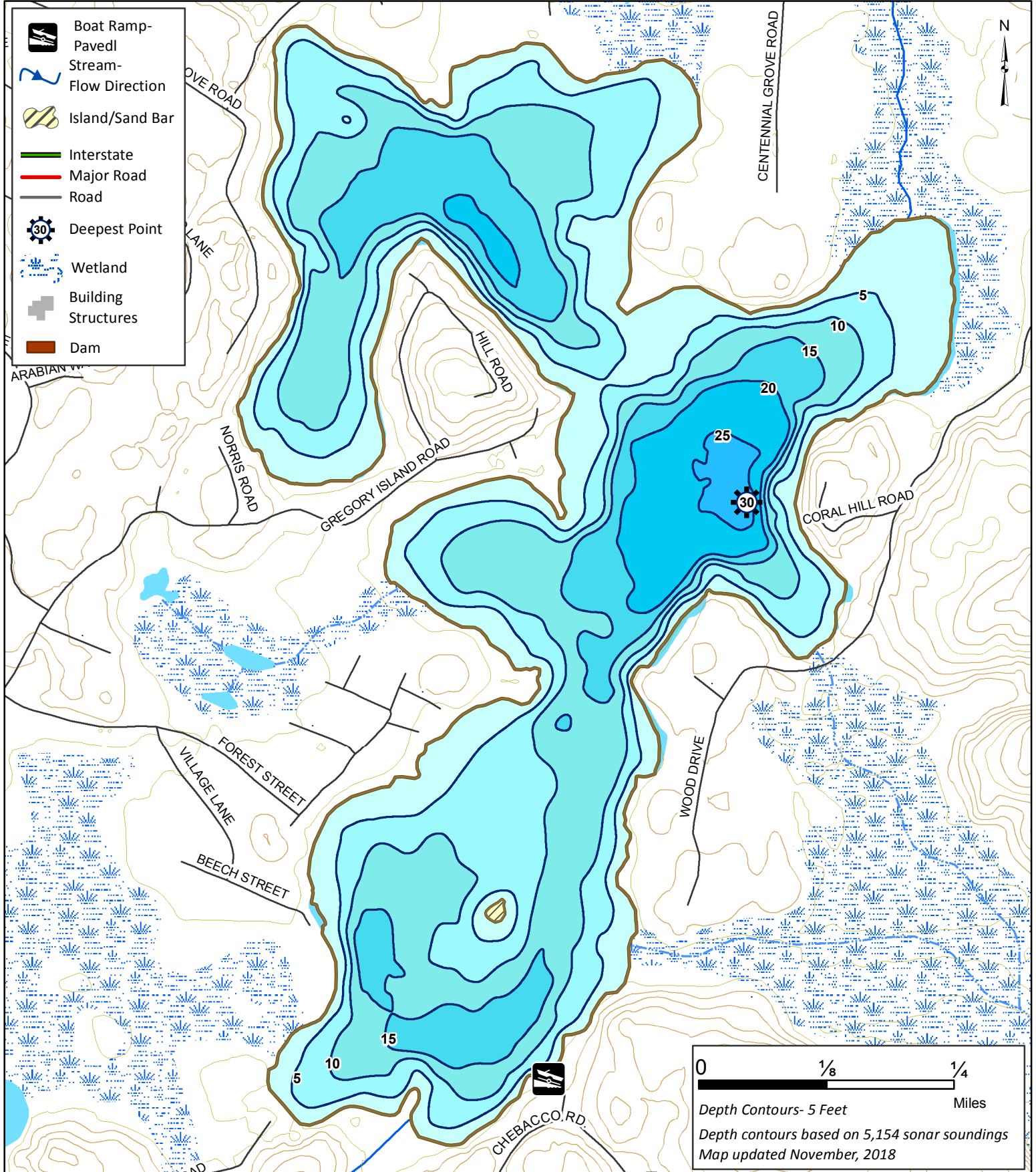
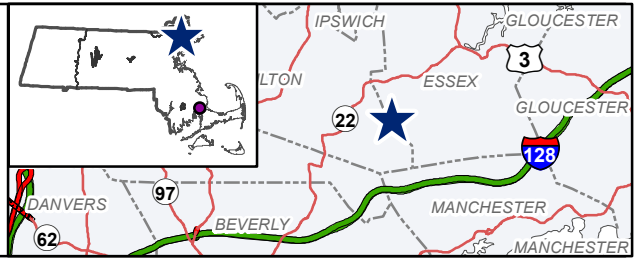
Prevent the transport of nuisance species.
Clean all recreational equipment.
ProtectYourWaters.net

Updated: 2018



Chebacco Lake

213 Acres
Essex/Hamilton
North Coast Watershed
Coordinates: 70°48'40"W 42°36'15"N
USGS Quad: MARBLEHEAD NORTH



- Boat Ramp-Paved
- Stream-Flow Direction
- Island/Sand Bar
- Interstate
- Major Road
- Road
- Deepest Point
- Wetland
- Building Structures
- Dam

0 1/8 1/4
Miles

Depth Contours- 5 Feet
Depth contours based on 5,154 sonar soundings
Map updated November, 2018