



# Cliff Pond, Brewster

## General Information

Cliff Pond is a 206-acre natural kettlehole pond with a maximum depth of 96 feet and an average depth of 33 feet. The pond gets its name from the cliffs surrounding the pond. Transparency is exceptional, extending to 23 feet, and aquatic vegetation is scant. The 2.6 miles of shoreline are undeveloped and protected within Nickerson State Park. The pond is heavily used by boaters during the summer months. The bottom is primarily sand with mud in the deeper areas.

## Recreational Access

Nickerson State Park is located off of Route 6A, which can be reached from Exit 12 off Route 6. There are two major access points on Cliff Pond: a shallow cartop access off of Flax Pond Road, and a fishermen's landing (with a concrete pad boat ramp) accessible via Deer Park Road to Nook Road (70° 1'50.57"W 41°45'21.24"N). Parking is available at the ramp for approximately 10 cars with trailers. The entire shoreline of the pond is wadeable. There is a 10 horsepower limit for Cliff Pond. Please contact DCR for additional information, fee structure, and/or restrictions pertaining to public access of Cliff Pond.

## Fish Populations

The following fish species were found during MassWildlife surveys: Brook Trout, Yellow Perch, Banded Killifish, Brown Trout, Rainbow Trout, Alewife, Smallmouth Bass and Brown Bullhead. Rainbow smelt and American eel have also been reported in small numbers.

## Fishing

Cliff Pond is the most heavily stocked trout water on Cape Cod and is stocked in the spring and fall with Brook, Brown and Rainbow Trout. It regularly produces large holdover trout, especially browns and rainbows. During the summer and early fall, trout will be located at depths of 30 to 40 feet, but for the rest of the year they can be found at almost any depth. Try trolling for them with smelt streamers or small, narrow spoons and spinners. This pond has produced some huge trout. The largest one found in our records was a 32 inch, 19.5 pound brown trout recovered dead in 1954. The pond has also given up a world record American eel (8 pounds, 9 ounces, 46 inches long and 10.5 inches in girth) caught here in 1992. Although the salmonids are the main attraction at this pond some decent sized smallmouth bass are waiting to be caught. Cliff Pond has produced Brook, Brown, Rainbow, and Tiger Trout, Largemouth Bass, Smallmouth Bass, and Yellow Perch that meet the minimum size for recognition by the Freshwater Sportfishing Awards Program.

## Useful Links:

[Get your Fishing License](#)

[Freshwater Fishing](#)

[Trout Stocking Information](#)

[Freshwater Sportfishing Awards Program](#)

## Learn more:

[Mass.gov/MassWildlife](http://Mass.gov/MassWildlife)

## Connect with us:

[Facebook.com/MassWildlife](https://Facebook.com/MassWildlife)

## Your local

### MassWildlife office:

195 Bournedale Road  
Buzzards Bay, MA 02532  
(508) 759-3406

## STOP AQUATIC HITCHIKERS!

Prevent the transport of nuisance species.  
Clean all recreational equipment.  
[ProtectYourWaters.net](http://ProtectYourWaters.net)

Updated: 2018



# Cliff Pond

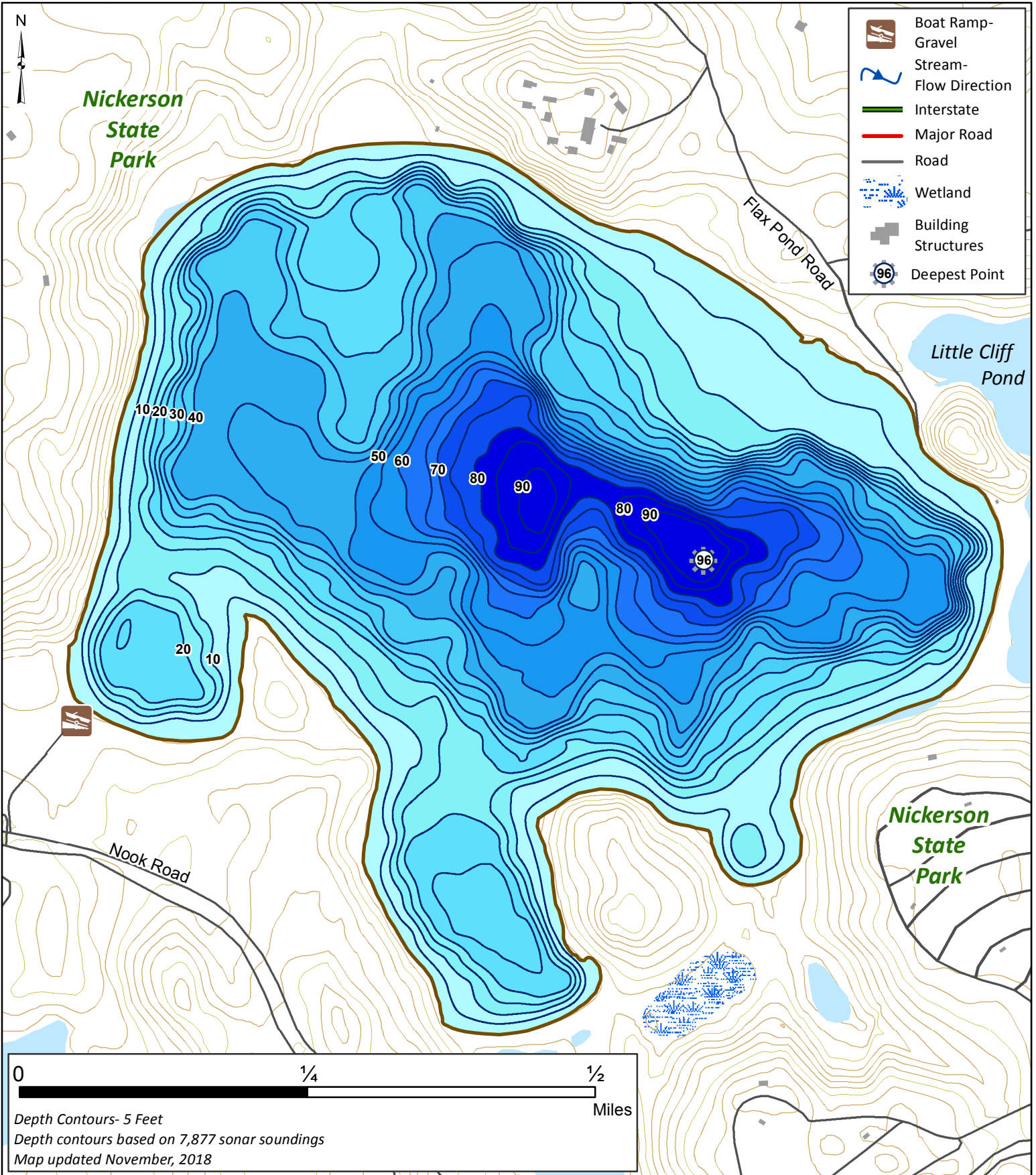
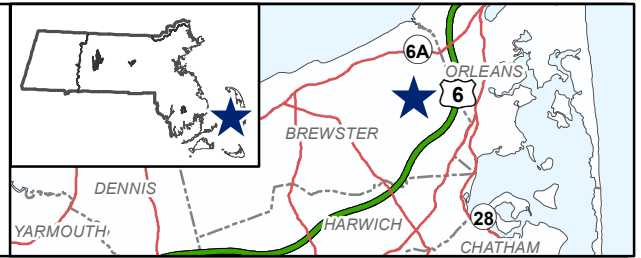
206 Acres

Brewster

Cape Cod Watershed

Coordinates: 70°01'49"W 41°45'20"N

USGS Quad: HARWICH



- Boat Ramp-Gravel
- Stream-Flow Direction
- Interstate
- Major Road
- Road
- Wetland
- Building Structures
- Deepest Point

0 1/4 1/2 Miles

Depth Contours- 5 Feet  
 Depth contours based on 7,877 sonar soundings  
 Map updated November, 2018