



Little Cliff Pond, Brewster

General Information

Little Cliff Pond is a 36-acre natural kettlehole pond located within Nickerson State Park with a maximum depth of 37 feet and an average depth of 14 feet. In the past, it was also called Long Pond because of its long thin shape. Transparency is very good, extending to 18 feet, and the bottom is composed of sand with mud present in the deeper areas. Aquatic vegetation is common particularly along the shoreline edges which are bordered with bullrushes. The 1.3 miles of shoreline are wooded and undeveloped. The pond does not stratify during the summer months and trout habitat is limited to spring areas.

Recreational Access

Nickerson State Park is located off of Route 6A, which can be reached from Exit 12 off Route 6. Little Cliff Pond is located between Cliff and Higgins Ponds. It can be reached by entering the park and taking a left onto Flax Pond Road. At the end of the road, Little Cliff is the small pond on the left (Cliff Pond is on the right). A paved ramp is suitable for launching cartop boats and light trailered craft. (70° 1'4.11"W 41°45'35.95"N). Parking is available at the ramp for approximately 6 cars with trailers. Please contact DCR for additional information, fee structure, and/or restrictions pertaining to public access of Little Cliff Pond.

Fish Populations

The following fish species were found during MassWildlife surveys: Largemouth Bass, Smallmouth Bass, Brown Bullhead, Yellow Perch, Pumpkinseed, Golden Shiners, Banded Killifish, and Goldfish. Largemouth bass and brown bullhead were abundant, pumpkinseed and yellow perch were common.

Fishing

Little Cliff Pond is stocked annually in the spring and fall with Brook, Brown and Rainbow Trout. Due to the small size of the pond and its undeveloped shoreline, it can be easily fished from shore or by wading. Spinfishers can try casting small spinners or spoons, flyfishers can try streamer flies and nymphs and baitfishers can use doughbaits or worms fished a little off the bottom. In July through September, look for the trout to be in a narrow depth range around 24 feet and over spring holes. While stocked trout are the primary focus here, a good population of Largemouth Bass is present in Little Cliff Pond. Some Smallmouth Bass are also caught every year. Little Cliff Pond has produced Brook, and Tiger Trout, Largemouth Bass, Chain Pickerel, and Yellow Perch that meet the minimum size for recognition by the Freshwater Sportfishing Awards Program.

Useful Links:

[Get your Fishing License](#)

[Freshwater Fishing](#)

[Trout Stocking Information](#)

[Freshwater Sportfishing Awards Program](#)

Learn more:

[Mass.gov/MassWildlife](#)

Connect with us:

[Facebook.com/MassWildlife](#)

Your local

MassWildlife office:

195 Bournedale Road
Buzzards Bay, MA 02532
(508) 759-3406

STOP AQUATIC HITCHIKERS!

Prevent the transport of nuisance species.
Clean all recreational equipment.
[ProtectYourWaters.net](#)

Updated: 2018



Little Cliff Pond

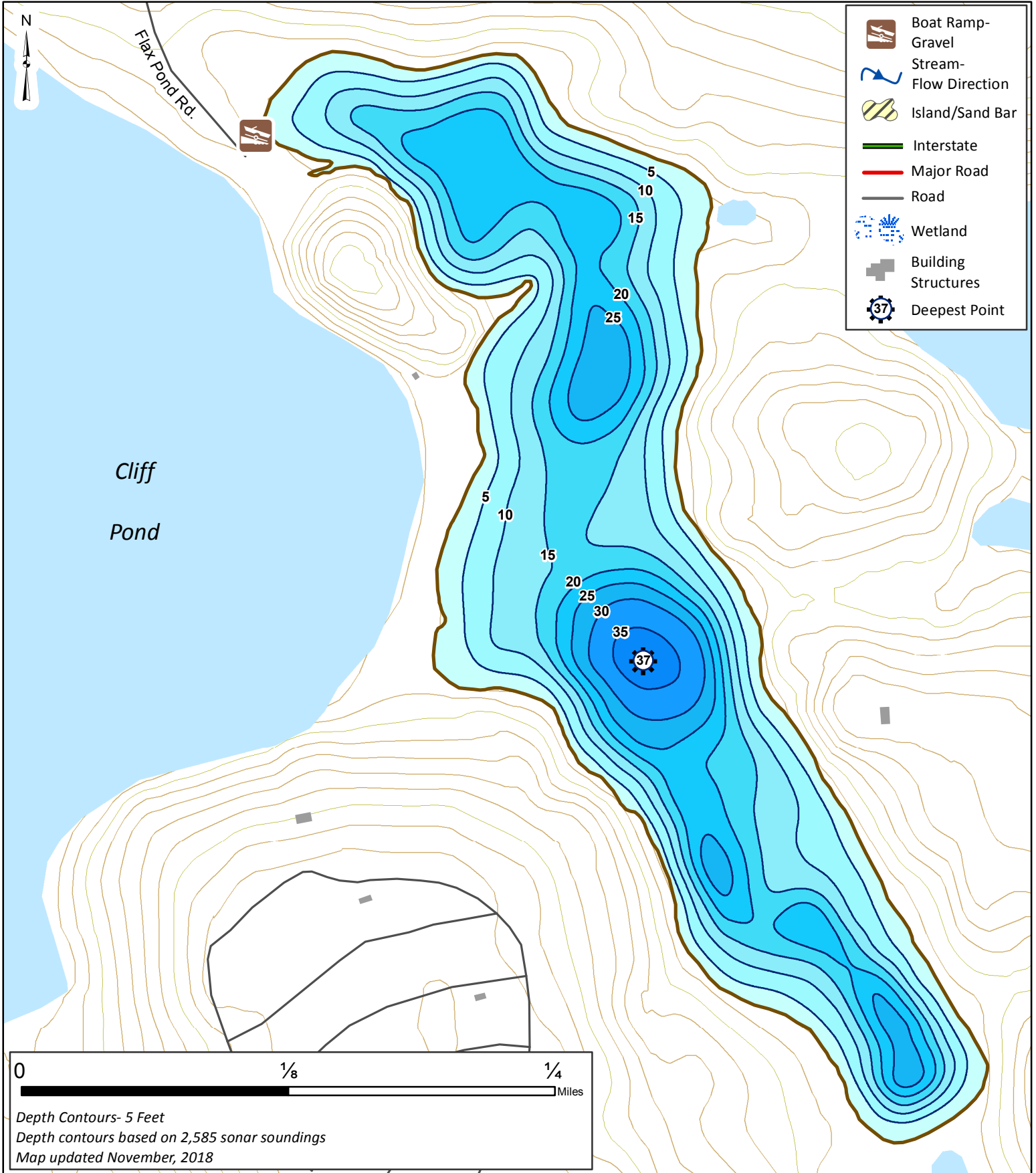
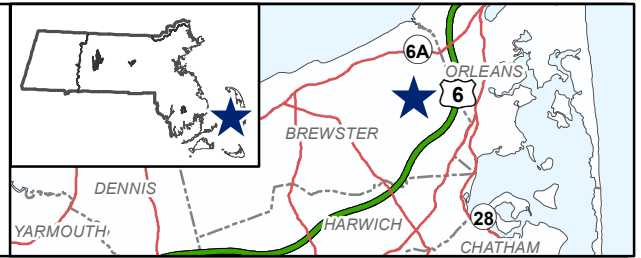
36 Acres

Brewster

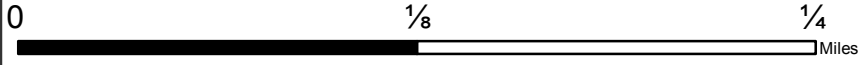
Cape Cod Watershed

Coordinates: 70°1'26" W 41°45'7" N

USGS Quad: HARWICH



- Boat Ramp-Gravel
- Stream-Flow Direction
- Island/Sand Bar
- Interstate
- Major Road
- Road
- Wetland
- Building Structures
- Deepest Point



Depth Contours- 5 Feet
Depth contours based on 2,585 sonar soundings
Map updated November, 2018