



STATION AREA LOOKING EAST FROM EAST STREET

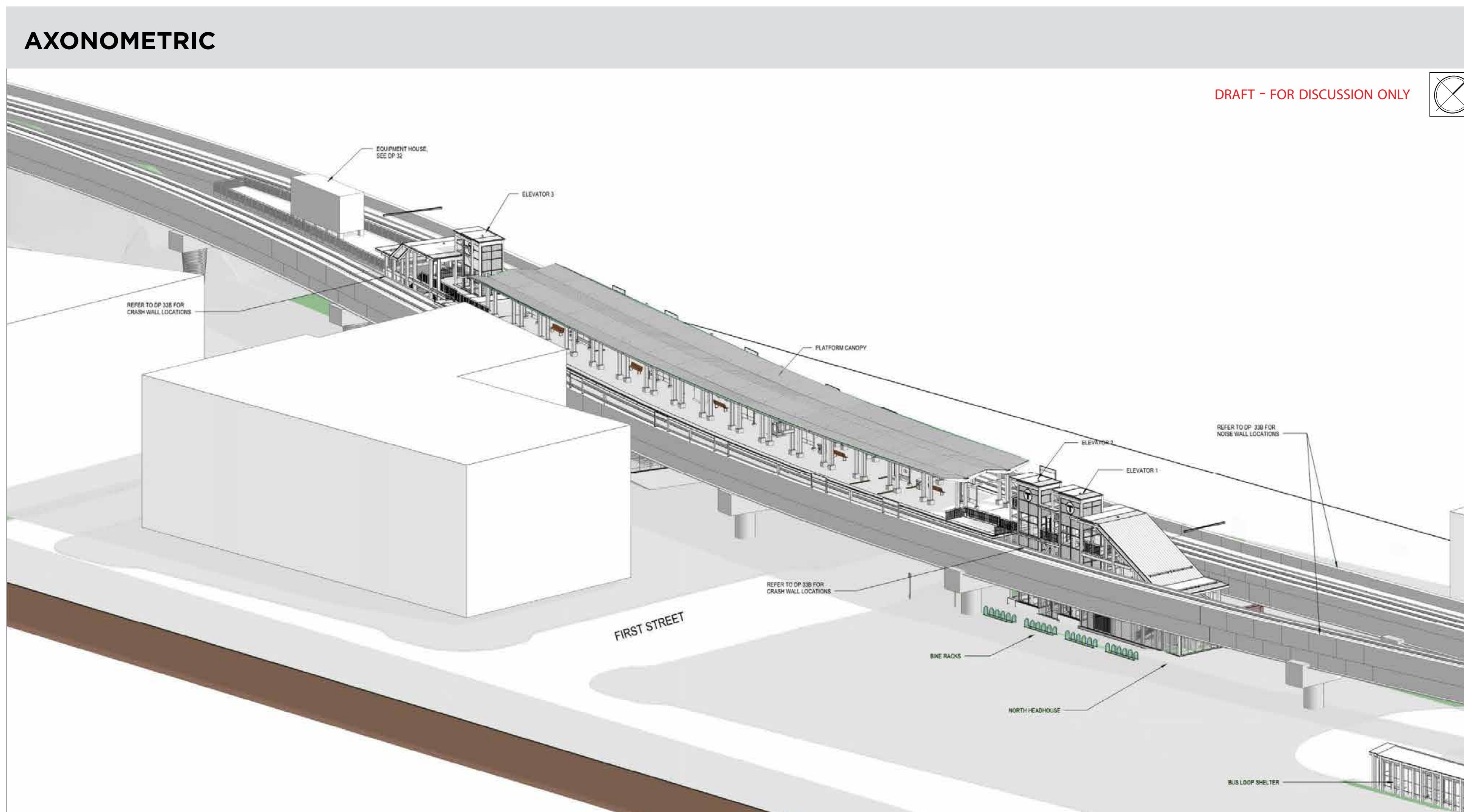


• **Design: 76% complete (as of Dec. 2018)**

• Lechmere Station will be relocated to the north side of Monsignor O'Brien Highway in order to align the station with the remainder of the Green Line Extension. The new station will have two Headhouses, with one entrance at North First Street (Cambridge Crossing Street Network), and one entrance at East St.

- Station entrances each feature two fare vending machines. In addition, the bus loop also features four more fare vending machines, two on each side.
- Additive canopy over station platform
- Two Customer Assistance Areas on the station platform, featuring an emergency call box. Additional call box located at the Areas of Rescue Assistance in the headhouse
- New bus loop designed with three-sided bus shelters to service bus routes 69, 87, 88, 80
- Sidewalks are 10 feet in width
- In order to develop Cambridge Crossing, DivcoWest (the project developer) is required to upgrade Monsignor O'Brien Highway from Land Boulevard to Third Street in cooperation with the City of Cambridge and MassDOT.
- New location provides greater access and options to this rapidly expanding area
- Access to Cambridgeside Galleria, Lechmere Canal Park, North Point Common and North Point Park

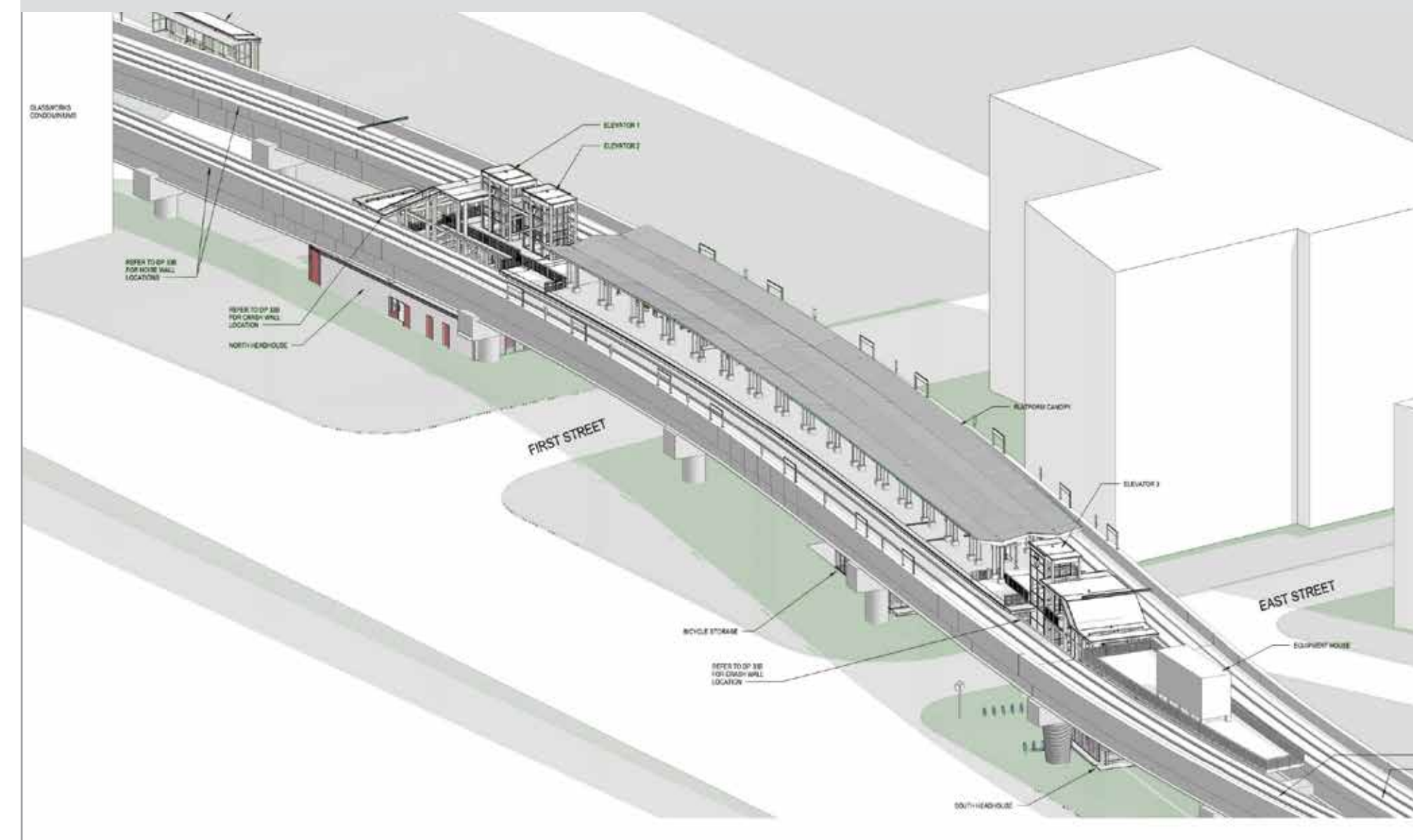
Number of Benches	Bike Storage Covered	Bike Storage Uncovered	Width/Length of Platform	Three Sided Shelter	Pick-up/Drop-off
8	182	72	32'-35'x355'	 (bus loop)	



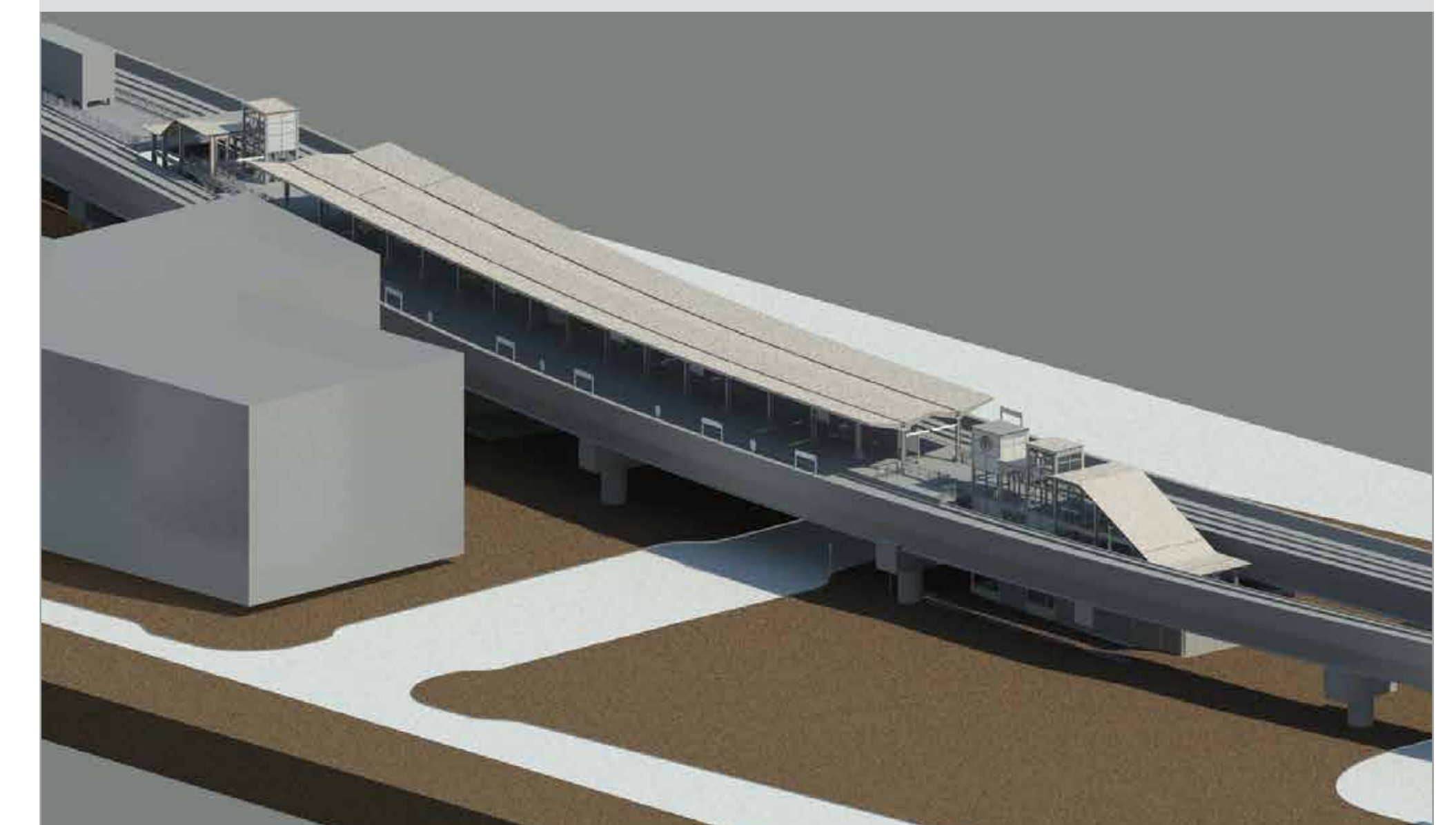
RENDERING (MARCH 2018)



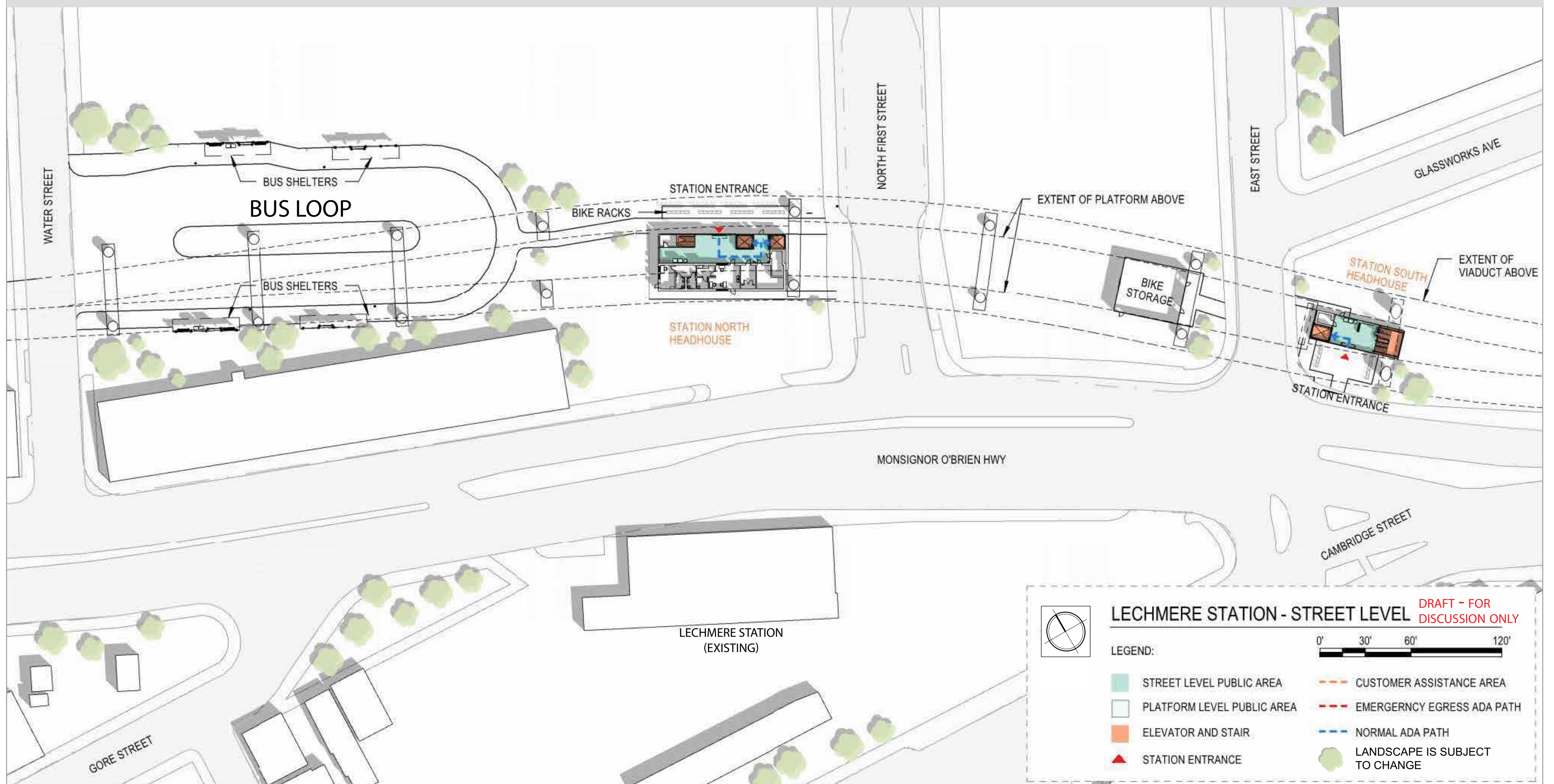
NEW STATION FROM O'BRIEN HIGHWAY



LECHMERE BUSWAY



SITE PLAN - STREET LEVEL



SITE PLAN - PLATFORM LEVEL

