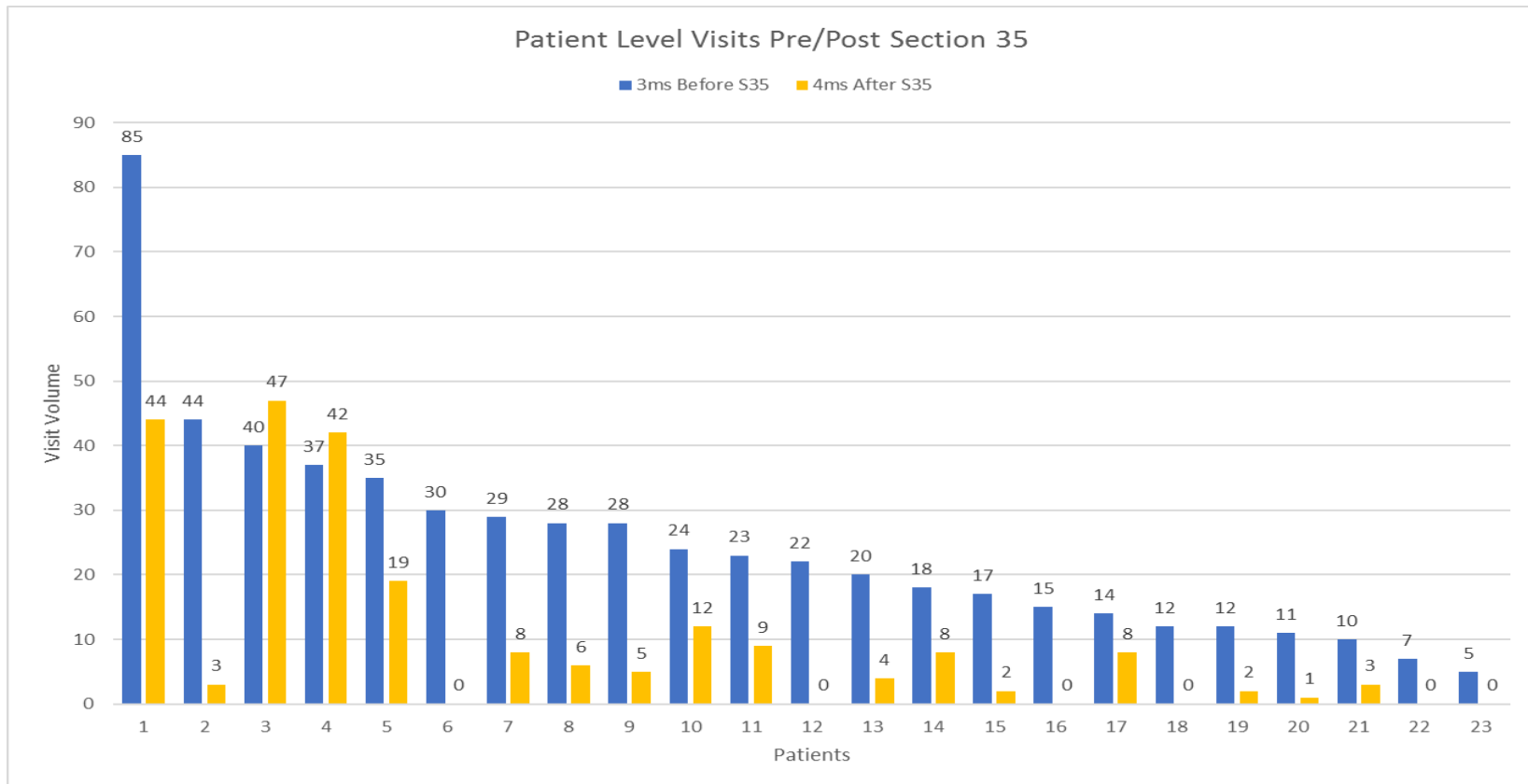
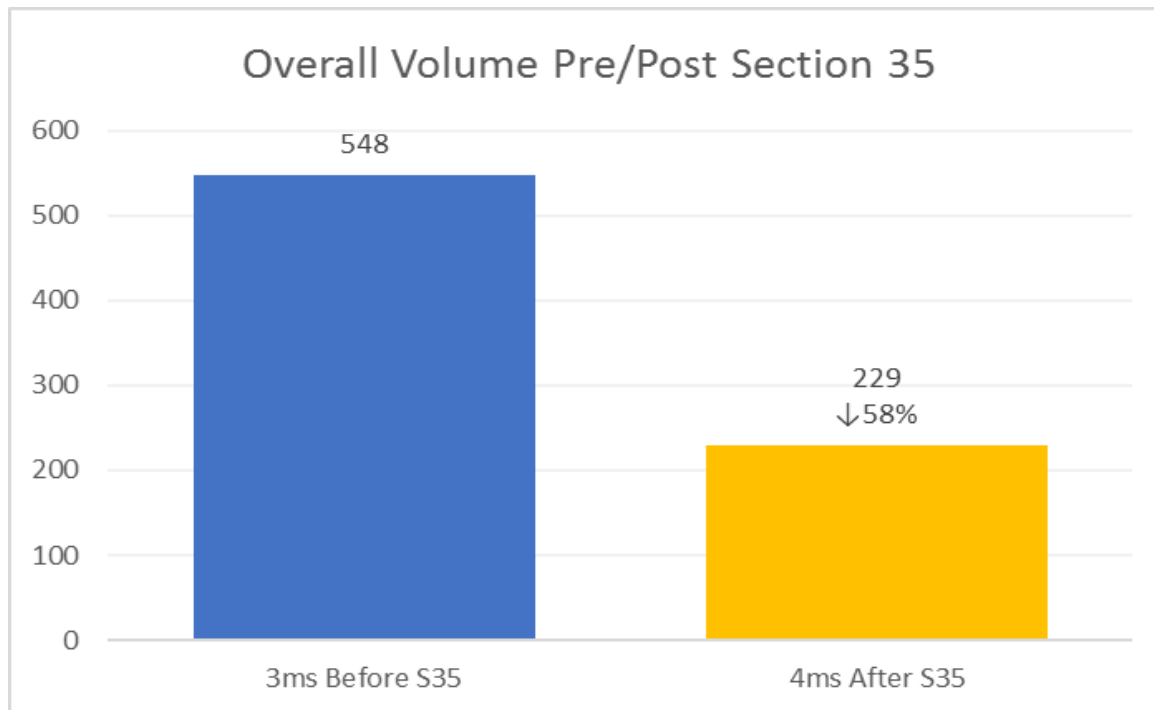


## Looking at number of ED visits 3 months pre-section 35 and 4 months post-section 35

- 48% of sections were placed at High Point facilities
- 39% were placed at Massachusetts Alcohol and Substance Abuse Center
- 91% of patients saw a reduction in MGH ED visits



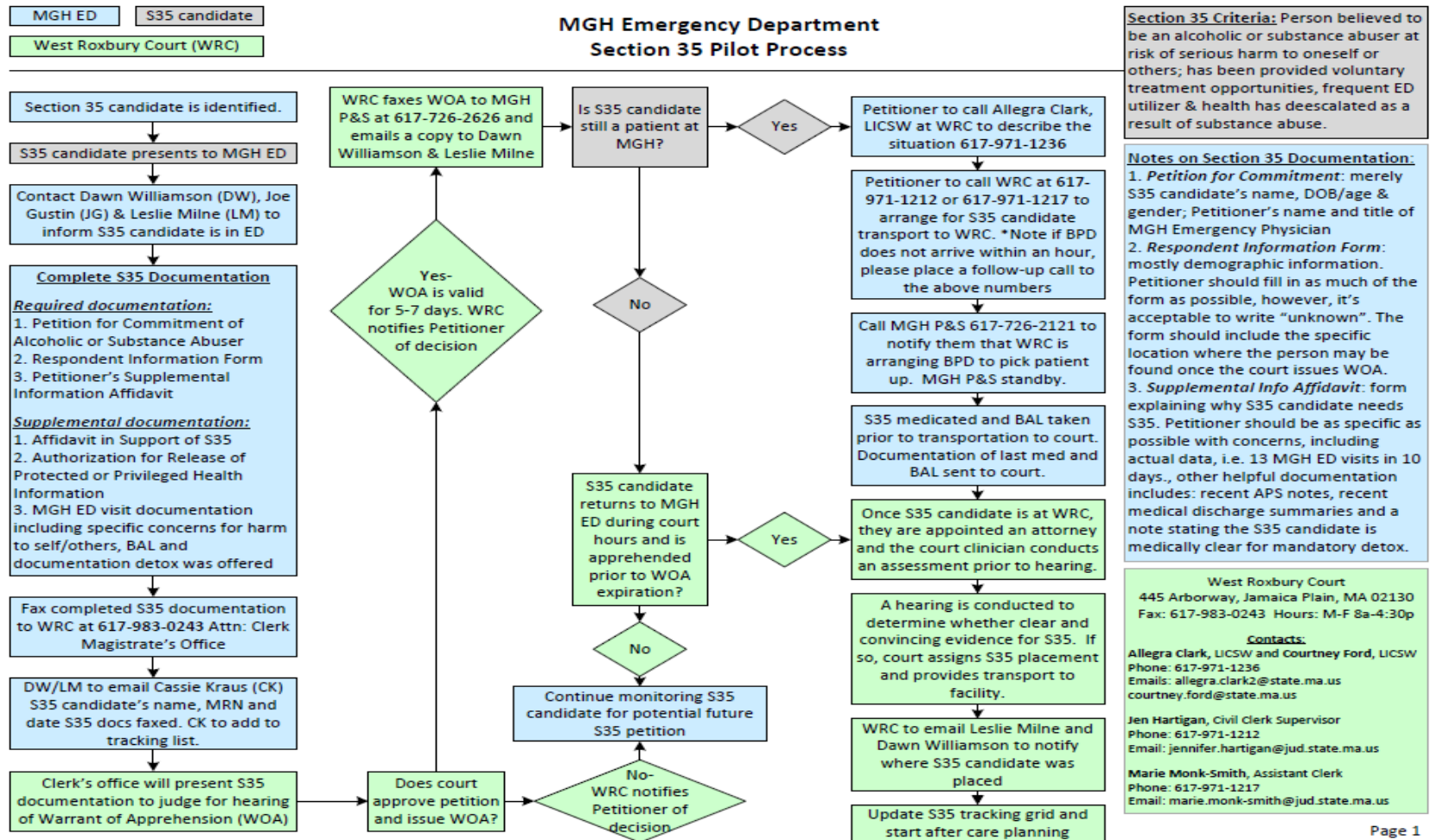
- Significant decreases in patient ED Utilization were seen pre and post Section 35
- Average 21 days
- Success stories:
  - “Brockton High Point is a Great model of how a facility should run.”
  - “If it wasn’t for the people at MGH sectioning me I wouldn’t be sitting here today.”



# The Section 35 Process



- Improvements in S35 process with West Roxbury Court Pilot – May 2017



# After Care Coordination and Planning



- Main S35 facilities include High Point, Plymouth MASAC, Shattuck
- Strong relationships with High Point
- Working on standardizing S35 aftercare coordination

## High Point Section 35 Continuum of Care Process

