

# Holyoke Soldiers' Home Access, Inclusion and Diversity Committee – December Meeting

December 17, 2021

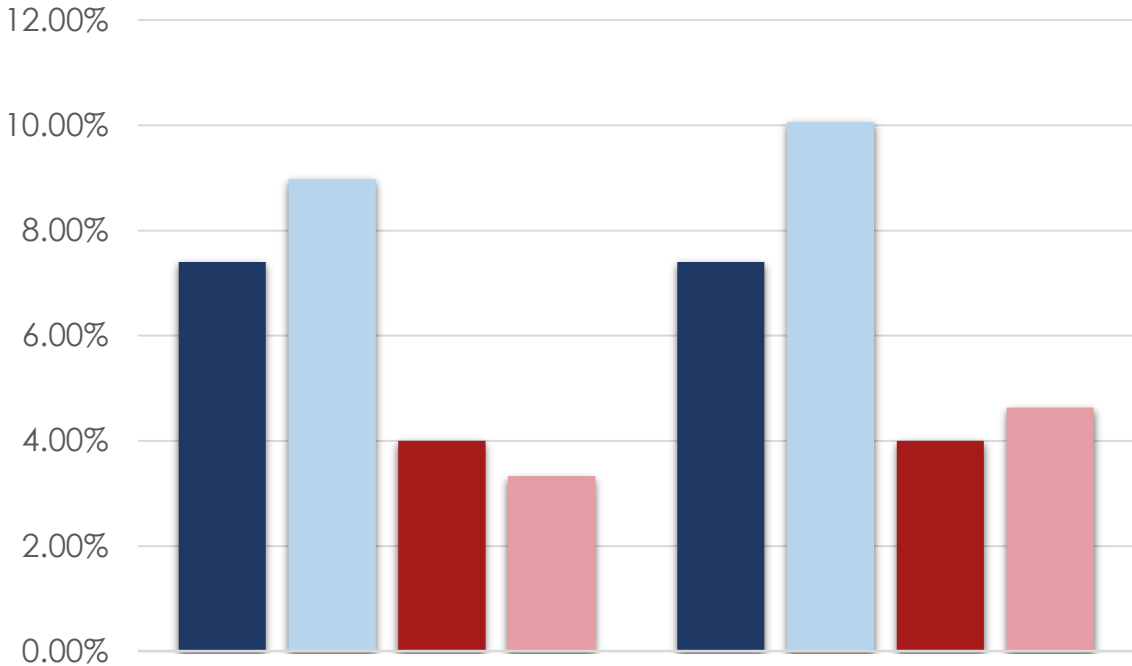


COMMODORE | WALSH  
HOLYOKE JOINT VENTURE

WALSH BROTHERS  
*Since 1901*

# PAST PROJECT MBE/WBE PERFORMANCE

## MBE/WBE

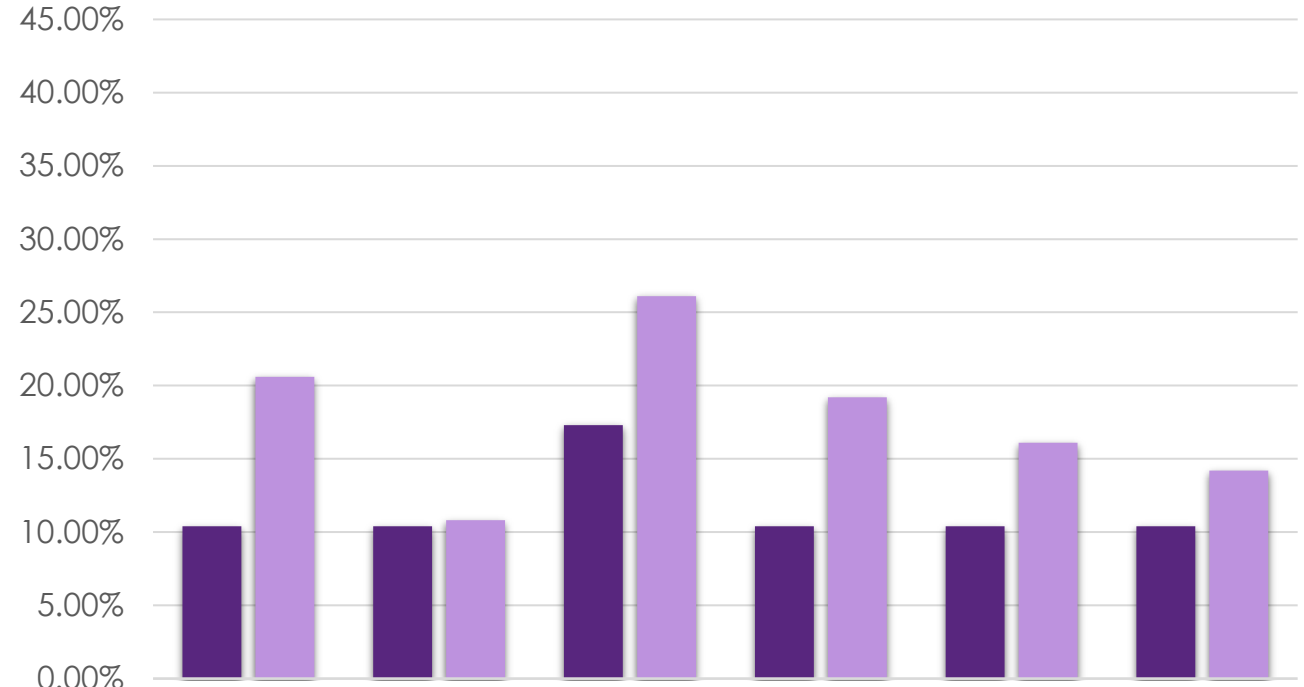


North Shore Community College, New Allied Health Facility

Mass College of Art, Center for Design + Media

■ MBE Goal ■ MBE Achieved ■ WBE Goal ■ WBE Achieved

## MBE/WBE Combined



Holyoke Community College, Bldg. G Campus Center

Westfield State University, New Academic Building

UMass Boston ISC

UMass Lowell Fox Hall

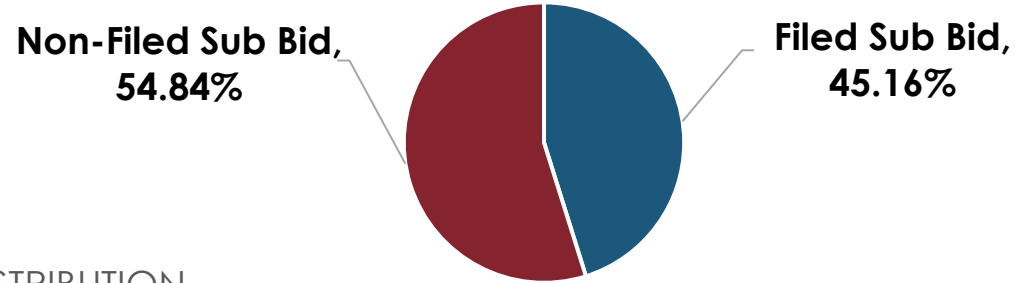
DCR Northpoint

Fitchburg State University, Residence Hall, Reno

■ M/WBE Combined Goal ■ M/WBE Combined Achieved

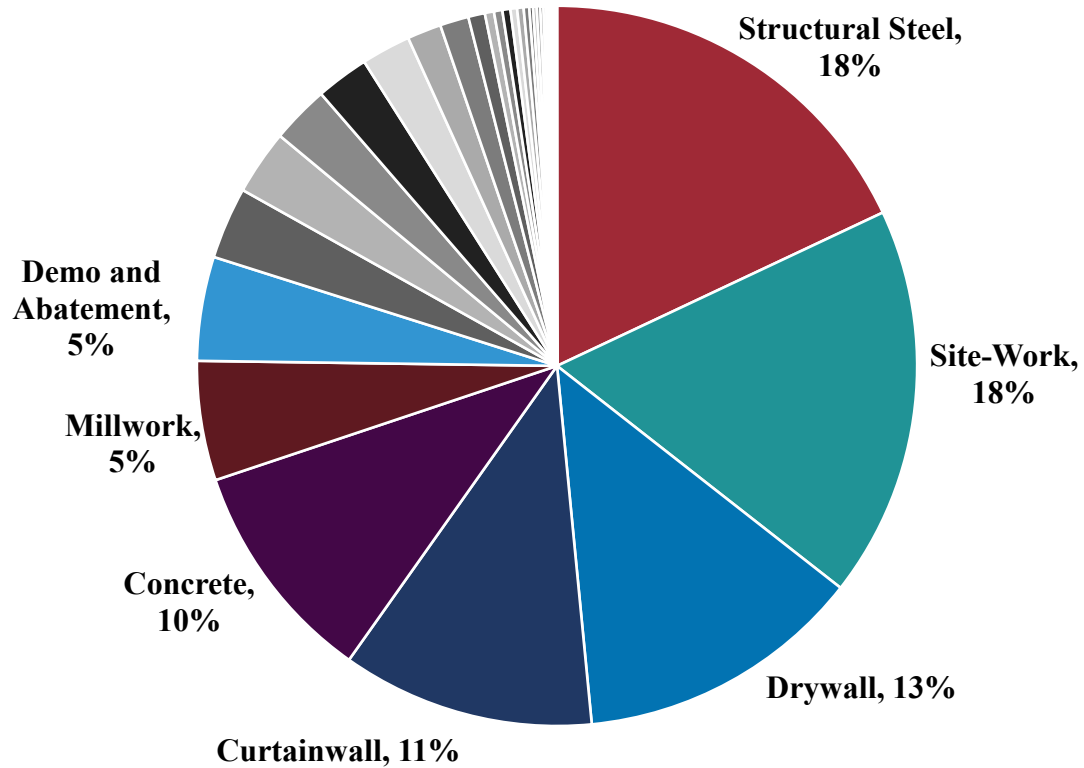
# FILED VS NON-FILED SUB BID ESTIMATE DISTRIBUTION

## PERCENTAGE OF DIRECT COST



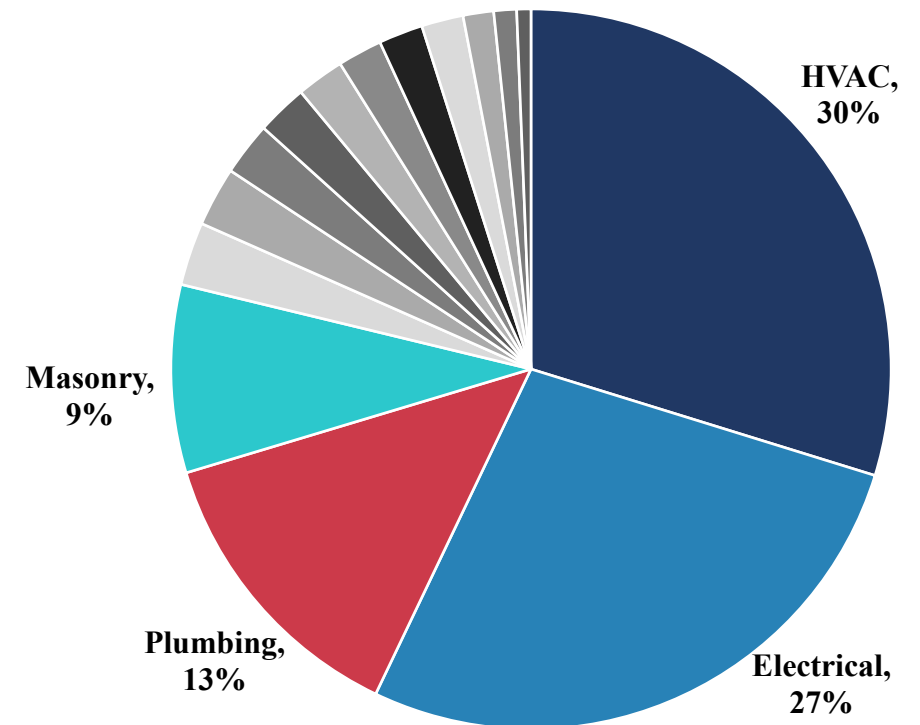
## NON-FILED SUB BID DISTRIBUTION

**7** Packages: **85%** of Total



## FILED SUB BID DISTRIBUTION

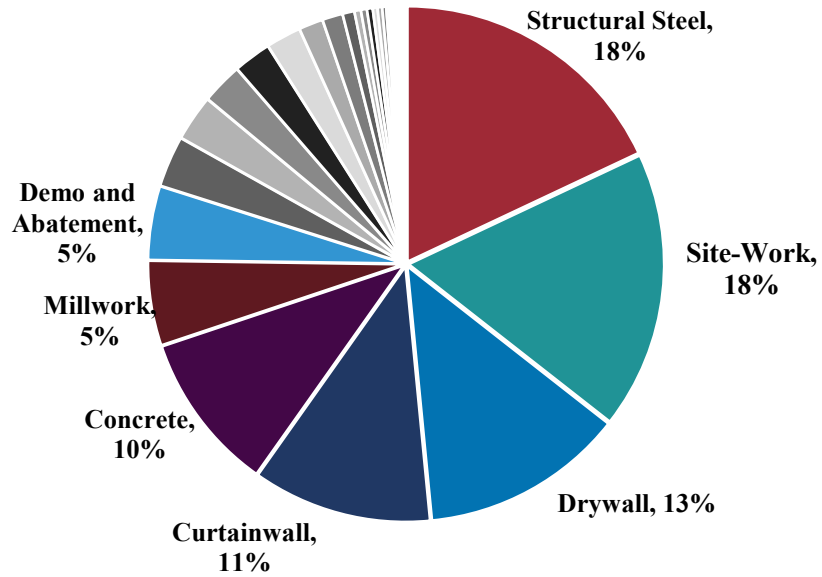
**4** Packages: **78%** of Total



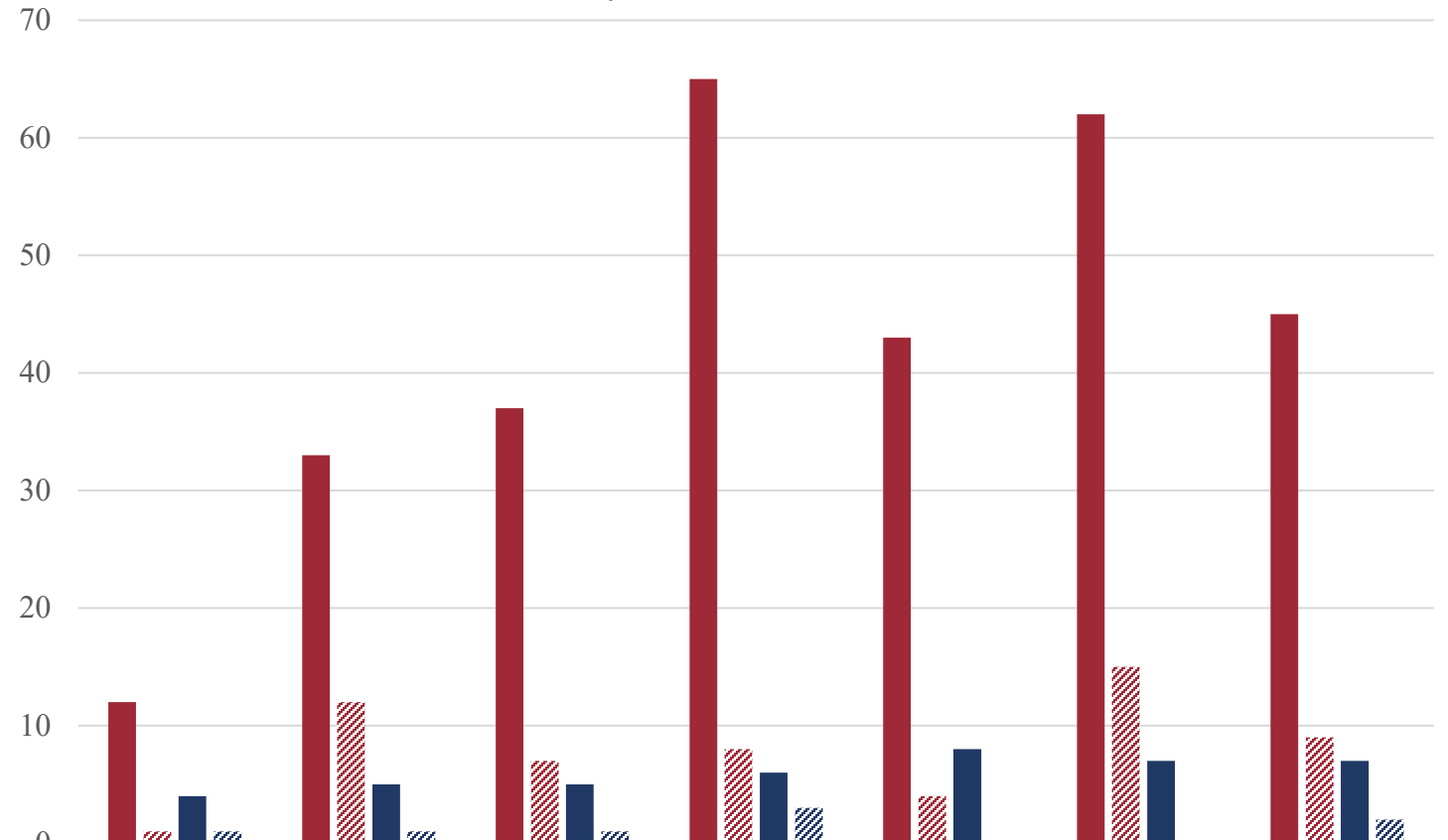
# NON-FILED SUB BID SUBCONTRACTOR POOL

## NON-FILED SUB BID DISTRIBUTION

7 Packages: **85%** of Total



## WBI Sub Pool Analysis - Non-Filed Sub Trade Bid



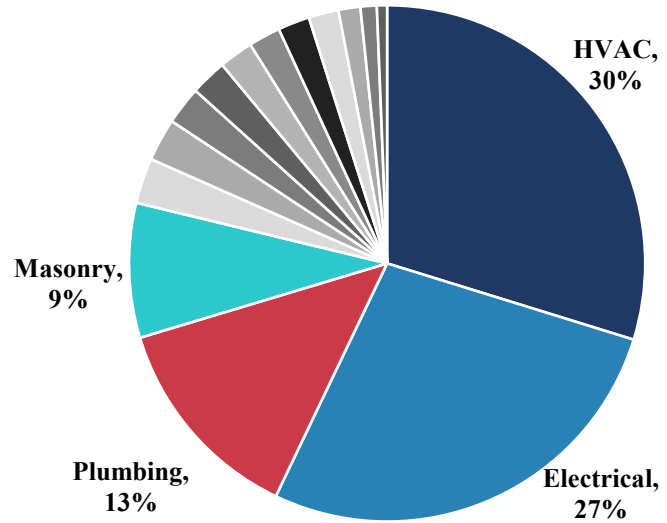
	02 Demo and Abatement	03 Concrete	05 Structural Steel	06 Millwork	08 Curtainwall	09 Drywall	31 Sitework
■ TOTAL VENDORS	12	33	37	65	43	62	45
▨ TOTAL M/W/VBE	1	12	7	8	4	15	9
■ TOTAL VENDORS (PKG LIMIT)	4	5	5	6	8	7	7
▨ M/W/VBE (PKG LIMIT)	1	1	1	3	0	0	2

■ TOTAL VENDORS    ▨ TOTAL M/W/VBE    ■ TOTAL VENDORS (PKG LIMIT)    ▨ M/W/VBE (PKG LIMIT)

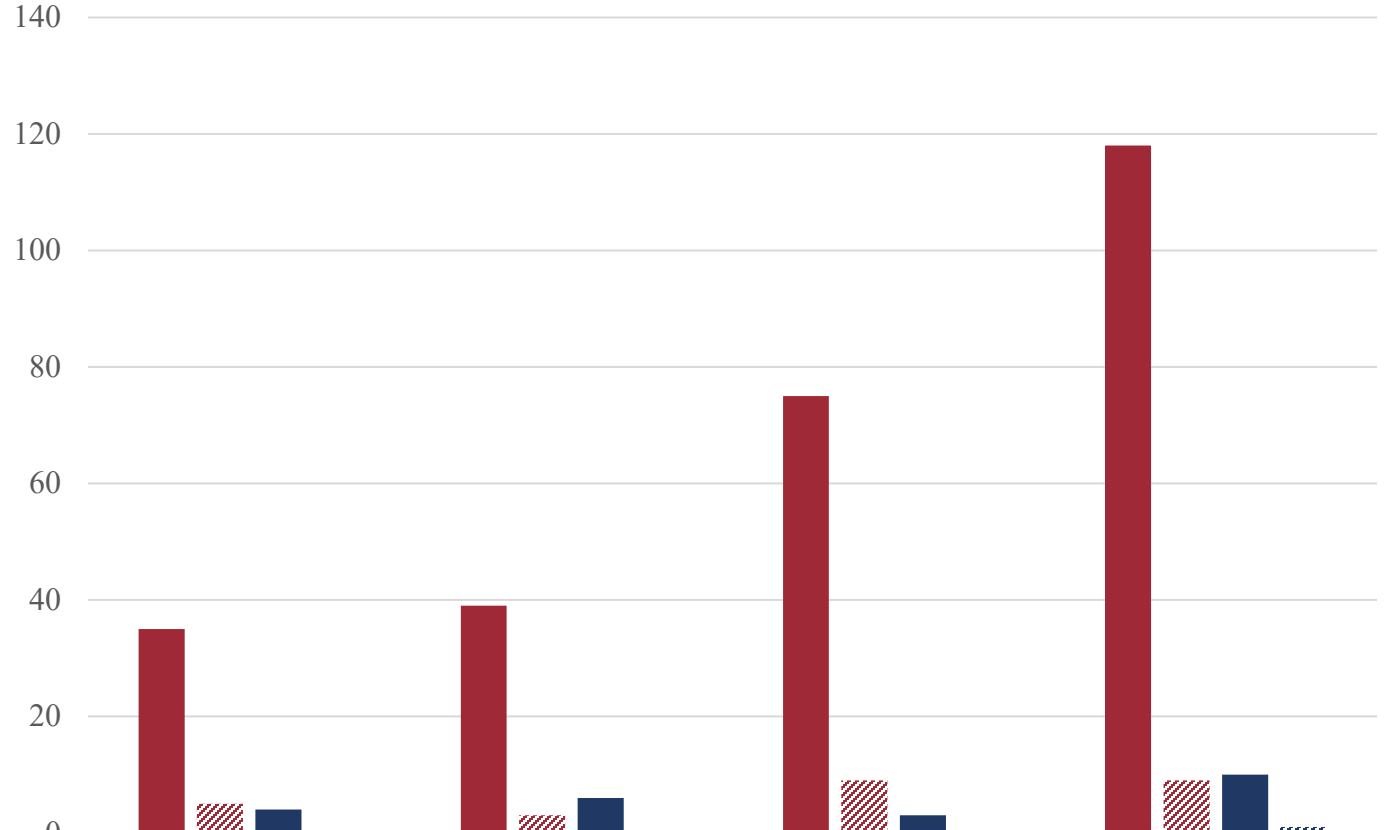
# FILED SUB BID DCAMM CERTIFIED SUBS

## FILED SUB BID DISTRIBUTION

**4** Packages: **78%** of Total



## WBI Sub Pool Analysis - DCAMM Certified Subs – Filed-sub Trade Bid



	04 Masonry	22 Plumbing	23 HVAC	26 Electrical
■ TOTAL VENDORS	35	39	75	118
▨ TOTAL M/W/VBE	5	3	9	9
■ TOTAL VENDORS (PKG LIMIT)	4	6	3	10
▨ M/W/VBE (PKG LIMIT)	0	0	0	1

■ TOTAL VENDORS    ▨ TOTAL M/W/VBE    ■ TOTAL VENDORS (PKG LIMIT)    ▨ M/W/VBE (PKG LIMIT)

# M/W/VBE CHALLENGES

State 149A Mass General Laws for subcontractor procurement.

Project size and large bid packages.

Complexity of the Project; site topography, high-rise life safety systems, and long-term care facility.

Location of project and available workforce.

Project schedule and procurement timeline.

DCAMM certification process and prequalification requirements for Filed-Sub Bidders.

SDO certification as a prerequisite for M/W/VBE credit.

Final terms and conditions of Project Labor Agreement.

<b>M/W/VBE STRATEGY</b>	<b>FILED SUB BID</b>	<b>NON-FILED SUB BID</b>
Conduct outreach and recruitment efforts to facilitate certification and participation of M/W/VBEs.	✓	✓
Unbundle larger scope packages to increase M/W/VBEs participation.	?	✓
Require prime subcontractors to include M/W/VBE lower tier contractors.	X	✓
Encourage JV/Mentor partnerships.	✓	✓
Consider programs and incentives for contractors that meet or exceed goals such as “quick pay” programs to expedite payment and working capital.	✓	✓
Explore technical assistance grants to facilitate participation in bid process.	✓	✓

PACKAGE SIZE	FILED SUB BID	NON-FILED SUB BID
<b>Greater than \$20M</b>	<b>23</b> HVAC <b>26</b> ELECTRICAL	<b>05</b> STRUCTURAL STEEL <b>31</b> SITEWORK
<b>\$10 – \$20M</b>	<b>22</b> PLUMBING	<b>09</b> DRYWALL <b>08</b> EXTERIOR GLAZING <b>03</b> CONCRETE
<b>\$5 – \$10M</b>	<b>04</b> MASONRY	<b>06</b> MILLWORK <b>02</b> BUILDING DEMOLITION & ABATEMENT
<b>Less than \$5M</b>	<b>21</b> FIRE PROTECTION <b>09</b> RESILIENT FLOORING <b>14</b> ELEVATORS <b>09</b> ACOUSTICAL CEILING TILE (ACT) <b>05</b> MISCELLANEOUS METALS <b>07</b> ROOFING <b>09</b> TILE <b>07</b> WATERPROOFING <b>09</b> PAINTING <b>08</b> INTERIOR GLAZING <b>09</b> TERRAZZO	<b>32</b> LANDSCAPING <b>10</b> SPECIALTIES <b>33</b> GEOTHERMAL <b>11</b> COMMERCIAL FOOD SERVICE EQUIPMENT <b>08</b> DOORS, FRAMES, HARDWARE <b>07</b> APPLIED FIREPROOFING <b>09</b> RESINOUS FLOORING <b>12</b> WINDOW TREATMENTS <b>10</b> SIGNAGE <b>13</b> GREENHOUSE <b>06</b> ROUGH CARPENTRY <b>09</b> ACOUSTICAL WALL PANELS <b>10</b> OPERABLE PARTITIONS <b>32</b> FENCING <b>32</b> PREFABRICATED BRIDGES <b>11</b> PATIENT LIFTS <b>07</b> ACOUSTICAL SPRAY - K-13 <b>08</b> OVERHEAD DOORS   LOADING DOCK EQUIPMENT <b>09</b> CARPET <b>07</b> SPRAYED INSULATION <b>11</b> WASTE HANDLING EQUIPMENT <b>11</b> MORTUARY EQUIPMENT <b>10</b> FIREPLACES <b>11</b> RESIDENTIAL APPLIANCES <b>32</b> TERRACE SHELTER <b>14</b> BRIDGE CRANE <b>32</b> BUS DROP-OFF



Thank You

Questions/Suggestions?



COMMODORE | WALSH  
HOLYOKE JOINT VENTURE

WALSH BROTHERS  
*Since 1901*