



Municipal Vulnerability Preparedness (MVP)



State and local partnership to build resiliency to climate change

1. Engage
Community

2. Identify CC
impacts and
hazards

3. Complete
assessment of
vulnerabilities &
strengths

4. Develop and
prioritize actions

5. Take Action



CHARLES D. BAKER
GOVERNOR

OFFICE OF THE GOVERNOR
COMMONWEALTH OF MASSACHUSETTS
STATE HOUSE • BOSTON, MA 02133
(617) 725-4000

KARYN E. POLITO
LIEUTENANT GOVERNOR

By His Excellency
CHARLES D. BAKER
GOVERNOR

EXECUTIVE ORDER NO. 569

**ESTABLISHING AN INTEGRATED CLIMATE CHANGE STRATEGY
FOR THE COMMONWEALTH**

WHEREAS, climate change presents a serious threat to the environment and the Commonwealth's residents, communities, and economy;

WHEREAS, extreme weather events associated with climate change present a serious threat to public safety, and the lives and property of our residents;

WHEREAS, the Global Warming Solutions Act (the "GWSA") directs the Secretary of Energy and Environmental Affairs and the Department of Environmental Protection to take certain steps to reduce greenhouse gas emissions and prepare for the impacts of climate change, including setting statewide greenhouse gas emissions limits for 2020, 2030, 2040 and 2050;

WHEREAS, the statewide greenhouse gas emissions limit for 2020 is 25% below the 1990 level of emissions and the corresponding limit for 2050 is 80% below the 1990 level of emissions, but no interim limits have yet been set for 2030 or 2040;

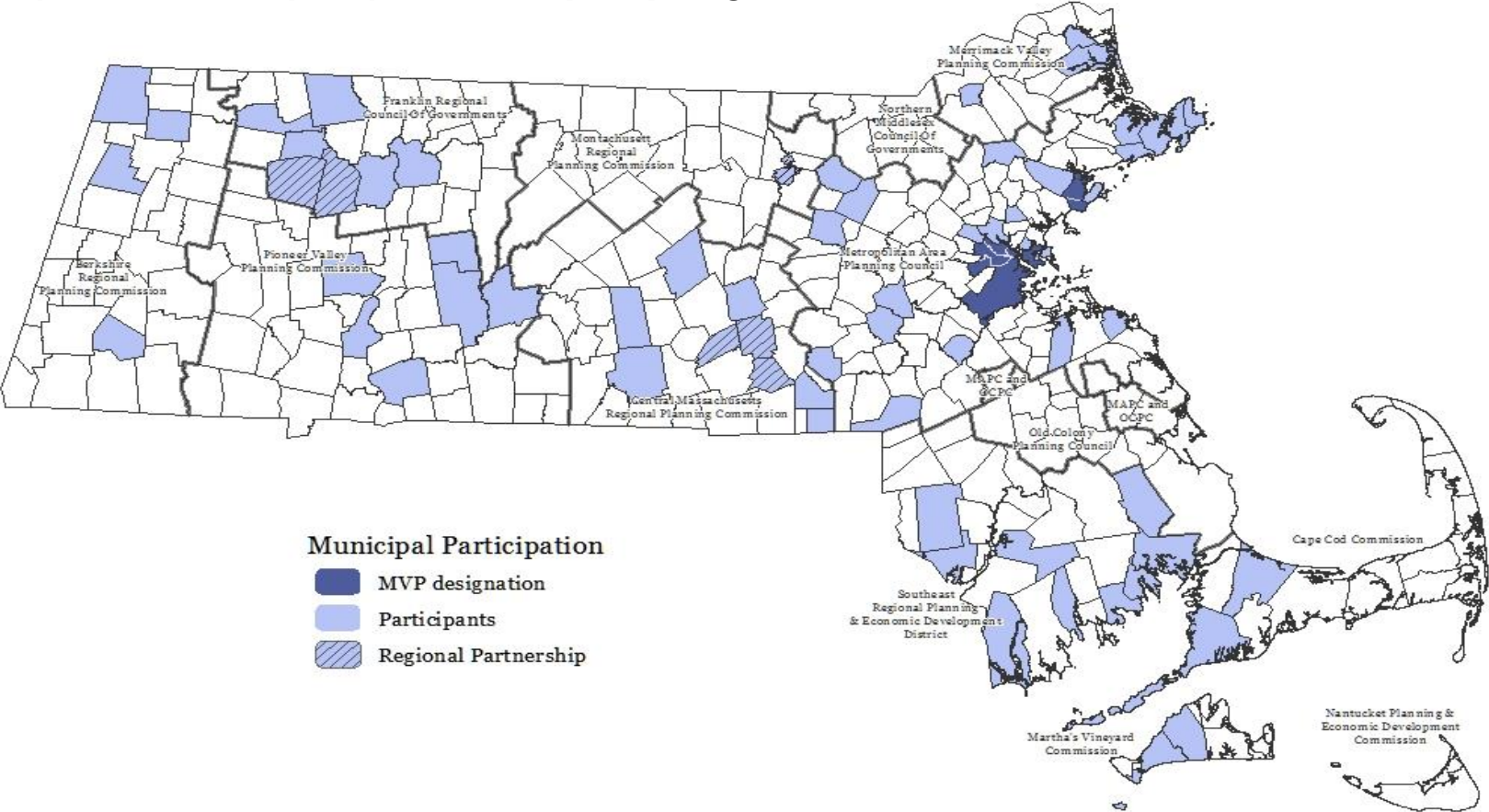
WHEREAS, the Commonwealth can provide leadership by reducing its own emissions from state operations, planning and preparing for impending climate change, and enhancing the resilience of government investments;

WHEREAS, the transportation sector continues to be a significant contributor to greenhouse gas emissions in the Commonwealth, and is the only sector identified through the GWSA with a volumetric increase in greenhouse gas emissions;

WHEREAS, the generation and consumption of energy continues to be a significant contributor to greenhouse gas emissions in the Commonwealth, and there is significant potential



Municipal Vulnerability Preparedness (MVP) Program 2017-2018





MVP Program

Ensuring Success Webinars



- Working with MVP Service Providers
 - EEA and TNC
- Advancing Social Equity in Climate Adaptation Planning
 - MAPC
- Alternatives for engaging your community
 - December 18, 2017
 - RTWN
 - Other than acting as service provider, how can you help the CRB process?
- The Importance of Listening
 - January 8, 2018
 - MMC
 - Why honest engagement with constituents and stakeholders is critical to project success
- Bylaw Review
 - January 22, 2018
 - Mass Audubon
 - The impact of local bylaws and regulation on nature based solutions
- Nature Based Solutions
 - February 5, 2018
 - TNC
 - Cost effective, long term solutions that leverage natural assets of your municipality
- Characterizing coastal flood hazards and increasing resilience
 - February 26, 2018
 - CZM
 - How to characterize future potential coastal flood risk, identify vulnerabilities and advance community action



MVP Program

Learn more



Select Language State Organizations Log in to...

Mass.gov Search Mass.gov SEARCH

LIVING WORKING LEARNING VISITING & EXPLORING YOUR GOVERNMENT

Municipal Vulnerability Preparedness Program

Learn about the Municipal Vulnerability Preparedness Program that helps support cities and towns develop resiliency plans.

TELL US WHAT YOU THINK

<https://www.mass.gov/municipal-vulnerability-preparedness-program>

Katie Theoharides – kathleen.theoharides@state.ma.us

Jenny Norwood – jennifer.norwood@state.ma.us

Alternatives for engaging your community

Meet our speakers

Sara Burns, Water Resource Specialist, The Nature Conservancy,
sara.burns@tnc.org

Bill Napolitano, Environmental Planner, Southeast Regional Planning and
Economic Development District (SRPEDD), bnap@srpedd.org

Stefanie Covino, Coordinator, Shaping the Future of Your Community
Program, Mass Audubon, scovino@massaudubon.org

Eric Walberg, Climate Services Director, Manomet, ewalberg@manomet.org

A serene winter scene featuring a vast, snow-covered field in the foreground. Several bare, thin trees are scattered throughout the landscape, their branches reaching out against the white snow. In the middle ground, a dense line of evergreen trees forms a dark silhouette against the sky. A small, light-colored house with a dark roof is visible through the trees on the left side. The sky is filled with soft, white clouds, and the overall lighting is bright and even.

Sara Burns, TNC, sara.burns@tnc.org

Resilient Taunton Watershed Network (RTWN)

- Formed in 2014
- **Collaboration** of local, non-profit, regional organizations, and state and federal government representatives who care about the future health and resilience of the Taunton River Watershed
- **Believe that ecological and economic resilience go hand in hand.**
- Provide **education and resources** to local officials and residents



Municipal Vulnerability Preparedness Process



Office of the Governor
COMMONWEALTH OF MASSACHUSETTS
State House • Boston, MA 02133
(617) 725-4000

By His Excellency
CHARLES D. BAKER
GOVERNOR

EXECUTIVE ORDER NO. 569

ESTABLISHING AN INTEGRATED CLIMATE CHANGE STRATEGY FOR THE COMMONWEALTH

WHEREAS, climate change presents a serious threat to the environment and the Commonwealth's residents, communities, and economy;

WHEREAS, extreme weather events associated with climate change present a serious threat to public safety, and the lives and property of our residents;

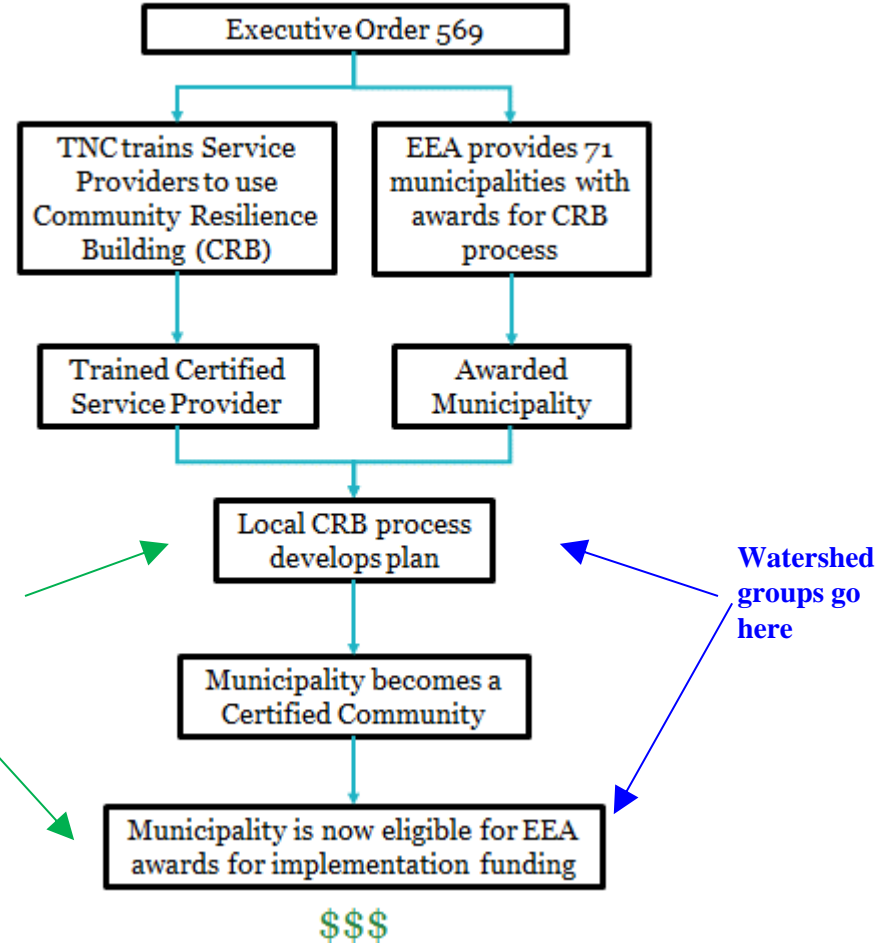
WHEREAS, the Global Warming Solutions Act (the "GWSA") directs the Secretary of Energy and Environmental Affairs and the Department of Environmental Protection to take certain steps to reduce greenhouse gas emissions and prepare for the impacts of climate change, including setting statewide greenhouse gas emissions limits for 2020, 2030, 2040 and 2050;

WHEREAS, the statewide greenhouse gas emissions limit for 2020 is 25% below the 1990 level of emissions and the corresponding limit for 2050 is 80% below the 1990 level of emissions, but no interim limits have yet been set for 2030 or 2040;

WHEREAS, the Commonwealth can provide leadership by reducing its own emissions from state operations, planning and preparing for impending climate change, and enhancing the resilience of government investments;

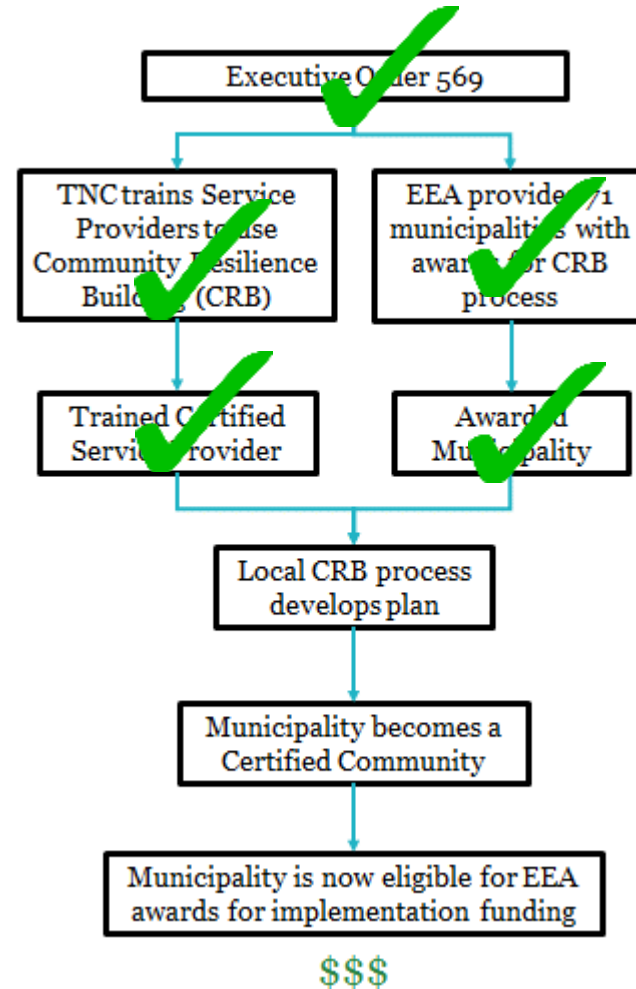
WHEREAS, the transportation sector continues to be a significant contributor to greenhouse gas emissions in the Commonwealth, and is the only sector identified through the GWSA with a volumetric increase in greenhouse gas emissions;

WHEREAS, the generation and consumption of energy continues to be a significant contributor to greenhouse gas emissions in the Commonwealth, and there is significant potential



Where is MVP Now?

- Communities are choosing their provider
- Providers are planning their CRB process



Community Resilience Building WORKSHOP GUIDE




- Stakeholder based vulnerability and strength identification process.
- Participants identify opportunities to increase resilience, develop solutions, and prioritize actions.
- Prioritized action plans are developed including time horizon information

Why You Should Care

- MVP certified plans will be crossed walked into Open Space Plans, and Hazard Mitigation Plans.
- Incorporate into comprehensive planning process to ensure resilience is community priority
- MVP certified communities will be priority status for some state grant opportunities

Planning Document	What does it do?	What should I look for?	How do I change it?
Master Plan (MP)	Comprehensive guiding document that sets community goals	<ul style="list-style-type: none">• Current, reflects changing priorities?• Prioritizes sustainable development?• Defines specific measures to retain local community character & values?	Planning Board often with assistance of a special Master Planning Committee
Open Space and Recreation Plan (OSRP)	Identifies local natural resource and recreation priorities and plans for protection and management	<ul style="list-style-type: none">• Current, reflects current parcel status, priorities?• Allows variety of OS uses: recreation, conservation?• Considers land and water resources?• Consider local context of existing OS?	Conservation Commission, often with assistance of a special OS Committee. Must meet state guidelines





Stefanie Covino, Mass Audubon, scovino@massaudubon.org

Nature-Based Solutions



Nature-Based Solutions *use* natural systems, *mimic* natural processes, or *work in tandem with* traditional approaches to address natural hazards like **flooding**, **erosion**, **drought**, and **heat islands**.

Incorporating nature-based solutions in local planning, zoning, regulations, and built projects can help communities reduce their exposure to these impacts, resulting in reduced costs, economic enhancement, and safer, more resilient communities.

How environmental non-profits benefit MVP

- Understand multi-town watershed perspective - think regionally about hazards and strengths
- Share best practices with non-MVP towns and share benefits to apply
- Protection of natural features already improves resilience
- Assist with implementation of action-items focused on NBS



Devens Enterprise Commission



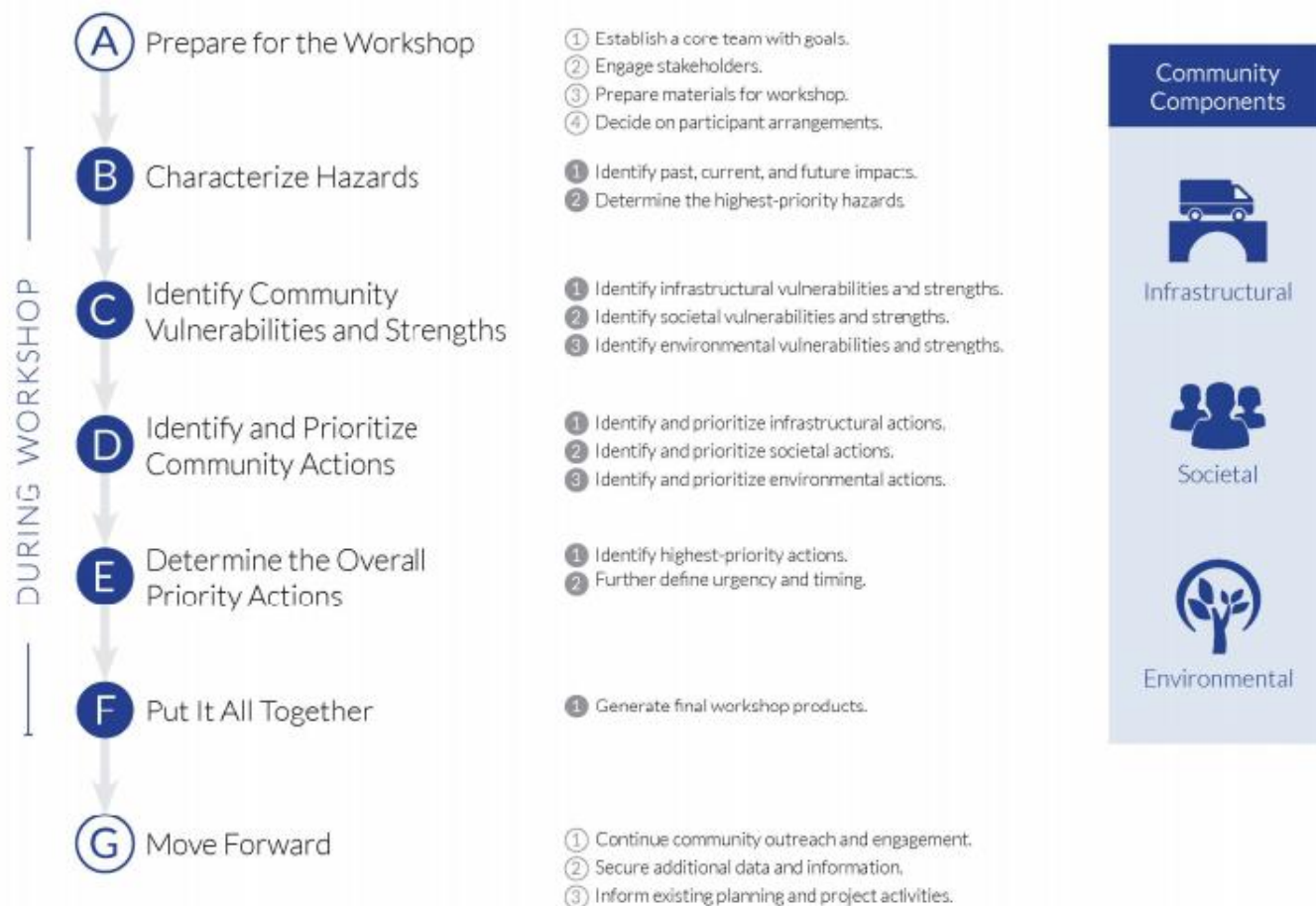
Engberg

How other non-profits benefit MVP

- Offer additional, diverse perspectives that may not otherwise be represented
- Share community understanding and support of resilience actions after the workshop



Overview of the Process (Steps & Tasks)





Bill Napolitano, SRPEDD, bnap@srpedd.org

Core Team and Stakeholders

Think about different sectors, be inclusive in the same way you would to do planning and updates

- Environmental
- Public Health
- Transportation
- Parks and Recreation
- Business and Financial Communities
- RPAs
 - Crunch census data
 - Health service
 - Transit needs



Alternatives for involvement

- Certified MVP Providers can be co-providers
- Assisting with facilitation
- Offering presentations on topic expertise
- Being a link to local stakeholders
- Improve cost-effectiveness for municipality by dividing work based on expertise and existing work
 - Existing relationships
 - Existing plans
 - Existing presentations, mapping, etc.
 - What's been done? What was successful? Lessons learned



Alternatives for involvement

Interested non-profits can assist with process

- Represent constituents, mission, etc. as stakeholder
- Act as scribe to take notes in small groups and contribute to creation of top tasks and final report
- Disseminate information to general public on importance of resilience building
- Participate in public forum at end of CRB process to improve public understanding and support of actions



Piloting & Sharing

- Norton, MA
- Resilience Roundtable offered resources and next steps
- Completed most tasks
- Kicked off other communities participating



A winter landscape photograph showing a snow-covered field or frozen body of water. In the foreground, there are bare, snow-dusted bushes and trees. The middle ground is a vast, flat expanse of snow. In the background, a line of trees, including evergreens and bare deciduous trees, stretches across the horizon under a cloudy sky. A small building is visible in the distance on the left side.

Eric Walberg, Manomet, ewalberg@manomet.org

Key Observed Climate Changes in MA



Temperature:



2.8°F

Since 1895

Growing Season:

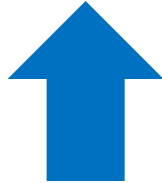


10 Days

Since 1950



Sea Level Rise:



10 inches

Since 1922

Strong Storms:



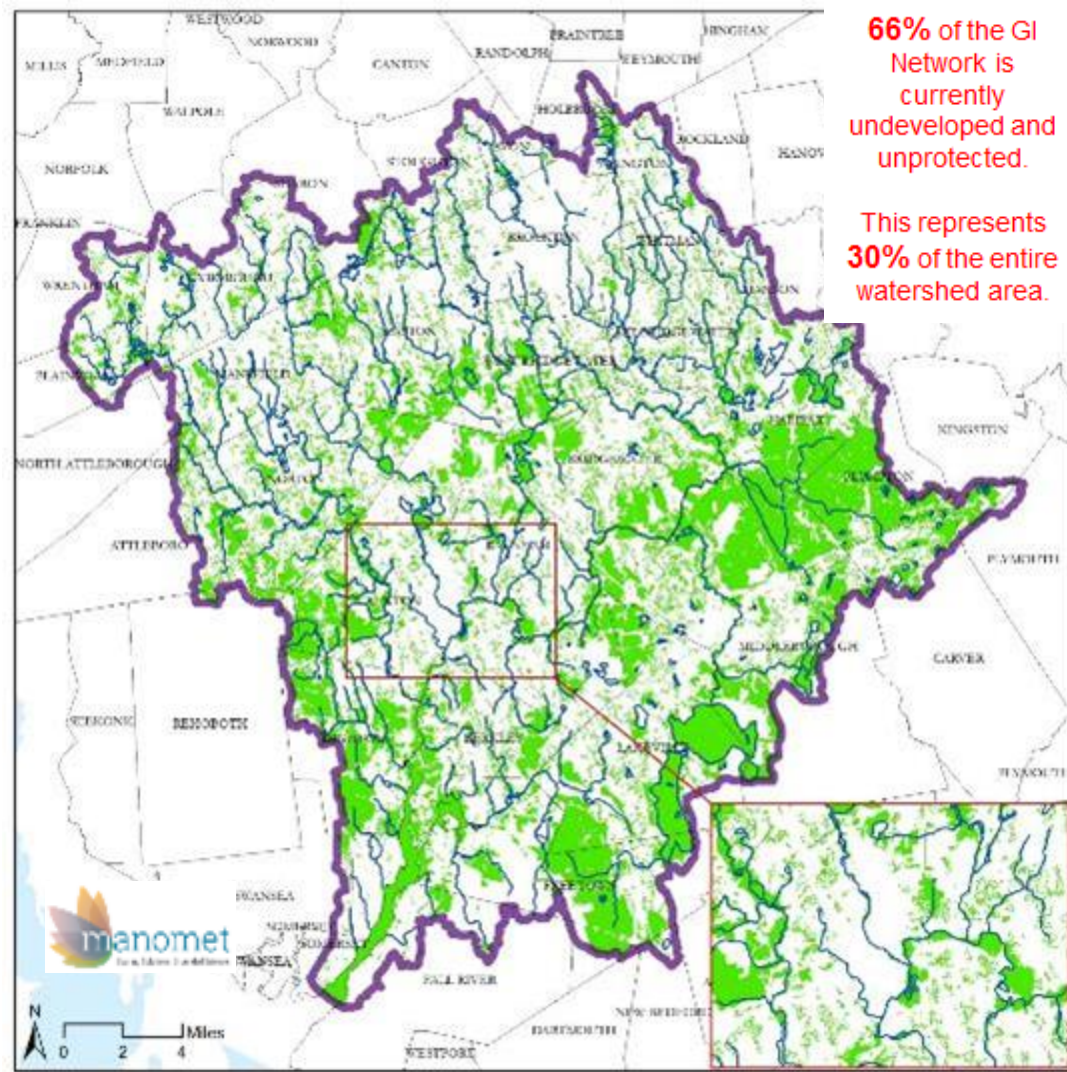
71%

Since 1958



An example of linking regional and local concerns

**Taunton Watershed
Undeveloped
&
Unprotected
(non
surface/wetland)
Green Infrastructure
Network**



Resources & Communicating Climate Change

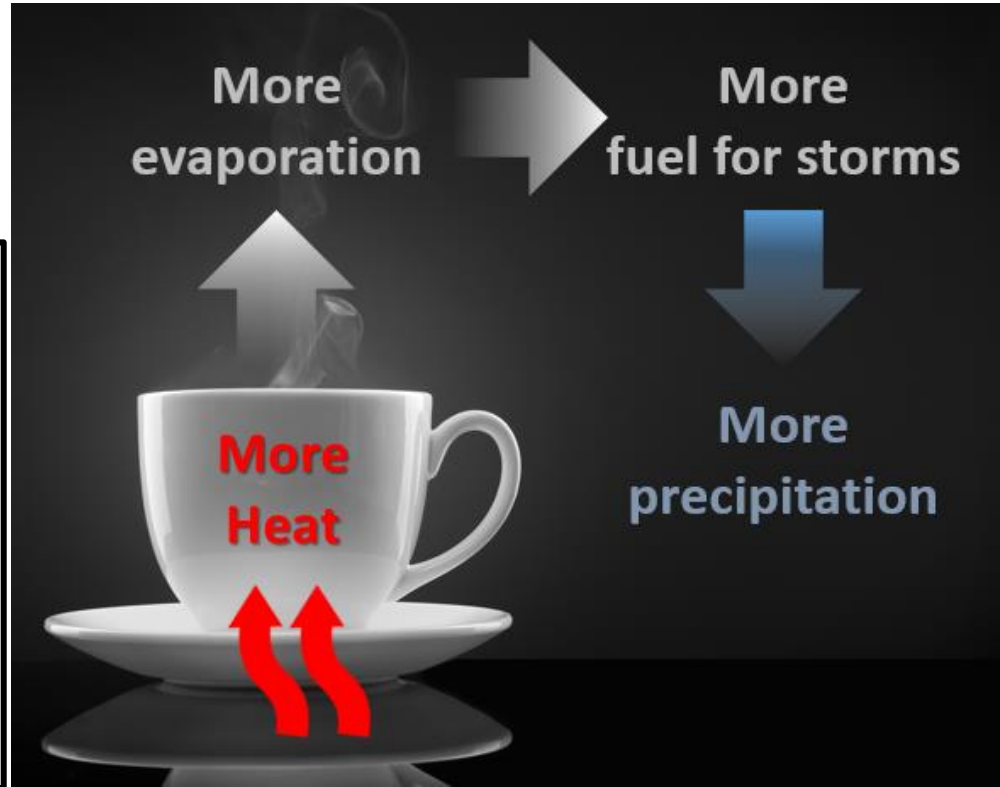
There are a lot of simple resources out there already; don't get overwhelmed

How Does Climate Change Work?

The heat-trapping blanket metaphor.



- The atmosphere is like a blanket that surrounds the earth.
- When we burn fossil fuels like coal and oil for energy, we add too much carbon dioxide to the atmosphere, which is like making the blanket thicker.
- The blanket has become too thick. It's trapping in too much heat, and the planet is warming up too fast.



How to frame climate change for any audience

Use Common Values:

- **Protect** our natural resources for *future generations* and *public health*.
- **Responsibly manage** our natural and fiscal resources.
- **Sense of place** encourages people to invest locally and overcome challenges.

Preparing for climate change through nature-based solutions satisfies each of those values.



Resources available: www.srpedd.org/rtnw

- Climate Resources 101
 - Science
 - Communication
 - Planning/LID
 - Mapping
- Mass Audubon's LID Fact Sheets
- 5 Things you can do to increase resilience
- Case studies of LID planning, implementation, financing, etc.
- GI Mapping of Taunton watershed
- Existing presentations





Sara Burns, TNC, sara.burns@tnc.org

Next steps: Communities

- See list of service providers for other nonprofits you may not have considered to include as providers, stakeholders, or co-providers
- We can share a list of which non-profits EEA and TNC have already reached out to
- Look to your neighbors and figure out if it makes sense to work together
 - Cost savings
 - Shared natural resources



Next steps: Non-profits

- We can share list of direct contacts of who applied within the municipality to reach out to
- Pick up the phone! This process is happening now. Find out where your municipality is and
- If your community is not currently involved, advocate for you community to apply in the second round of MVP communities



Local contacts for each community

<https://drive.google.com/file/d/1mXmMOXG7yLKZ4TdHXXG8kB7EqemqzwP6/view?usp=sharing>

MVP Community	Contract manager	Position	Street	Town	ZIP	Phone	email
Acton	Corey York	DPW Director/Town Engineer	472 Main Street	Acton	01720	978-929-7740	highway@acton-ma.gov
Adams	Donna E. Cesan	Community Development Director	8 Park Street	Adams	01220	413-743-8300 x131	dcesan@town.adams.ma.us
Arlington	Nat Strosberg	Senior Planner-Department of Planning & Community Development	730 Massachusetts Avenue	Arlington	02476	781-316-3093	nstrosberg@town.arlington.ma.us
Freetown	Lauren Moreau	Planning Technician	3 North Main Street	Assonet	02702	508-644-2270 x1402	lmoreau@freetownma.gov
Belchertown	Douglas Albertson	Town Planner	1 South Main Street	Belchertown	01007	413-323-0407	dalbertson@belchertown.org
Blackstone	Amy Sutherland	DPW, Administrative Assistant	15 St. Paul Street	Blackstone	01504	508-883-9331	asutherland@townofblackstone.org
Buckland	Andrea Llamas	Town Administrator	17 State Street	Buckland	01370	413-625-6330 x5	twadmin@town.buckland.ma.us
Newbury	Geoffrey H. Walker	Chair, Board of Selectmen	12 Kent Way	Byfield	01922	978-767-1050	hankwalkerdecyfurniture@comcast.net
Cambridge	John Richard Bolduc	Environmental Planner	344 Broadway	Cambridge	02139	617-349-4628	jbalduc@cambridgema.gov
Carver	Jack Hunter	Director of Planning and Community Development (Interim)	108 Main Street	Carver	02330	508-866-3450	jack.hunter@carverma.org
Charlemont	Peg Dean	Town Administrator	157 Main Street	Charlemont	01339	413-339-4335 x87	administrator@townofcharlemont.org
Charlton	Robin Craver	Town Administrator	37 Main Street	Charlton	01507	508-248-2206	robin.craver@townofcharlton.net
Chelsea	Alexander Train	Senior Urban Planner/Project Manager	500 Broadway	Chelsea	02105	617-466-4192	atrain@chelseama.gov
Chilmark	Tim Carooll	Director Emergency Management	401 Middle Road	Chilmark	02535	508-645-2101	emd@chilmarkma.gov
Cohasset	Brian Joyce	Director of Project Management and Planning	41 Highland Avenue	Cohasset	02025	781-383-3094	bjoyce@cohassetma.org
Colrain	Kevin Fox	Town Coordinantor	55 Main Road	Colrain	01340	413-624-6306	bos@colrain-ma.gov
Gosnold	Seth Garfield	Emergency Coordinator	28 Tower Hill Road	Cuttyhunk	02713	508-971-1120	oceanrancher@yahoo.com
Devens	Peter Lowitt	Director/Land Use Administrator for the Devens Enterprise Commission	33 Andrews parkway	Devens	01434	978-772-8831	peterlowitt@devensec.com
Essex	Brendhan Zubricki	Town Administrator	30 Martin Street	Essex	01929	978-768-6531	bzubricki@essexma.org
Falmouth	Julian M. Suso	Town Manager	59 Town Hall Square	Falmouth	02540	508-495-7320	jsuso@falmouthmass.us
Gloucester	Gregg Cademartori	Planning Director	3 Pond Road	Gloucester	01930	978-325-5242	gcademartori@gloucester-ma.gov

Thank you!

Sara Burns, Water Resource Specialist, The Nature Conservancy,
sara.burns@tnc.org

Bill Napolitano, Environmental Planner, Southeast Regional Planning and
Economic Development District (SRPEDD), bnap@srpedd.org

Stefanie Covino, Coordinator, Shaping the Future of Your Community
Program, Mass Audubon, scovino@massaudubon.org

Eric Walberg, Climate Services Director, Manomet, ewalberg@manomet.org