

B. General Access Conditions

DWSP has general conditions under which allowed activities must be conducted. These conditions are detailed below and summarized along with specific access conditions in Table 2. DWSP may close its properties to public access during weather, emergency, security, or other operational situations.

General Conditions

- It is the responsibility of the visitor to know and abide by the applicable rules, regulations, and conditions for access.
- General public access within DWSP lands in the Sudbury and Foss Reservoirs watershed is restricted to one hour before sunrise to one hour after sunset through gates or designated (posted) areas only, unless authorized by a permit from DWSP or its designee.
- Any activity which injures or defaces the property of the Commonwealth is strictly prohibited.
- Feeding wildlife is prohibited.
- Visitors are advised that active forestry harvest operations may be in progress on DWSP properties. Please avoid visiting such areas, entering harvest areas, or coming within three hundred feet of equipment.
- Visitors are asked to respect the rights of owners of adjacent property and not trespass on private lands.
- Because of the importance of protecting water quality, visitors are prohibited from depositing human waste on watershed lands by planning accordingly.
- Visitors are required to not wash objects in any watercourse.
- Visitors are asked to limit outdoor smoking activities to help prevent wildfires and carry out any refuse. No fires are allowed on DWSP properties.
- Please report any suspicious or dangerous activity on lands or waters by calling the MA State Police or 911. For areas around Sudbury Reservoir, the Open Channel and Crane Swamp contact MA State Police - Millbury Barracks at 508-929-3232. For areas around Foss Reservoir contact MA State Police - Framingham Barracks at 508-820-2250.
- Contact the Massachusetts Emergency Management Agency 24-hour dispatch center at 508-820-2000 for emergencies and Wachusett/Sudbury Watershed Ranger office at 978-365-3800 for any general questions regarding public access.

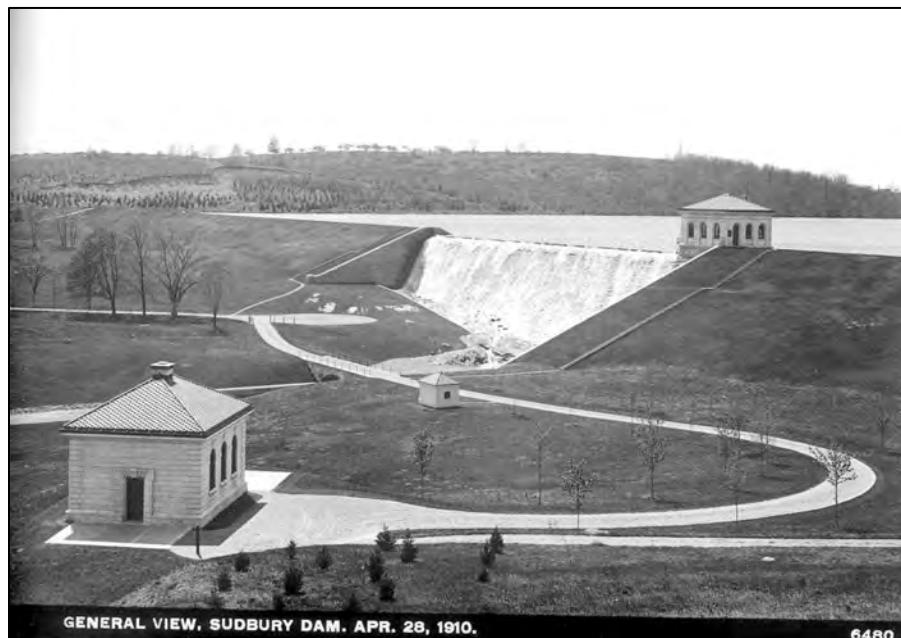


Table 2. DWSP Sudbury and Foss Reservoirs Public Access Policies – 2022

<i>Activity</i>	Crane Swamp “A”	Open Channel “B”	Sudbury Reservoir “C”	Foss Reservoir “D”
Advertising	⊘	⊘	⊘	⊘
Alcohol (possession of)	⊘	⊘	⊘	⊘
Bicycling	⊘ ¹	⊘ ²	⊘ ³	⊘
Boating, Canoeing, Kayaking, Boat Fishing, Paddleboarding	⊘	⊘	⊘	⊘
Camping	⊘	⊘	⊘	⊘
Commercial Activities	⊘ ⁴	⊘ ⁴	⊘ ⁴	⊘
Cross-country Skiing	□	□	□	□
Dogs/Other Animals	⊘	⊘	⊘	⊘
Fishing Derbies	⊘	⊘	⊘	⊘
Foraging	□ ⁵	□ ⁵	□ ⁵	□ ⁵
Geocaching and Related Activities	□ ⁶	□ ⁶	□ ⁶	□ ⁶
Group Activities (organized walks, tour buses, etc.)	□ ⁷	□ ⁷	□ ⁷	□ ⁴
Horseback Riding	⊘	⊘	⊘	⊘
Hunting	□ ⁸	□ ⁸	□ ⁸	⊘
Ice Fishing/Ice Skating	⊘	⊘	⊘	⊘
Marking or Cutting Trails/Roads	⊘	⊘	⊘	⊘
Metal Detecting/Magnet Fishing	⊘	⊘	⊘	⊘
Night Access	⊘	⊘	⊘	⊘
ORV (off road vehicle) Riding (including ATVs)	⊘	⊘	⊘	⊘
Organized Sports	⊘	⊘	⊘ ⁹	⊘
Shore and Stream Fishing	□	□	□	□
Sledding	⊘	⊘	⊘	⊘
Snowmobiling	⊘	⊘	⊘	⊘
Swimming	⊘	⊘	⊘	⊘
Target Shooting	⊘	⊘	⊘	⊘
Trapping	□ ⁸	□ ⁸	□ ⁸	⊘
Unmanned Aerial Vehicles/ Underwater Drones	⊘ ¹⁰	⊘ ¹⁰	⊘ ¹⁰	⊘ ¹⁰
Wading	⊘	⊘	⊘	⊘
Walking/Hiking/Snowshoeing	□	□	□	□
Wildlife/Bird Watching	□	□	□	□

⊘ Prohibited

□ Allowed - general restrictions

□[#] Specific Restrictions

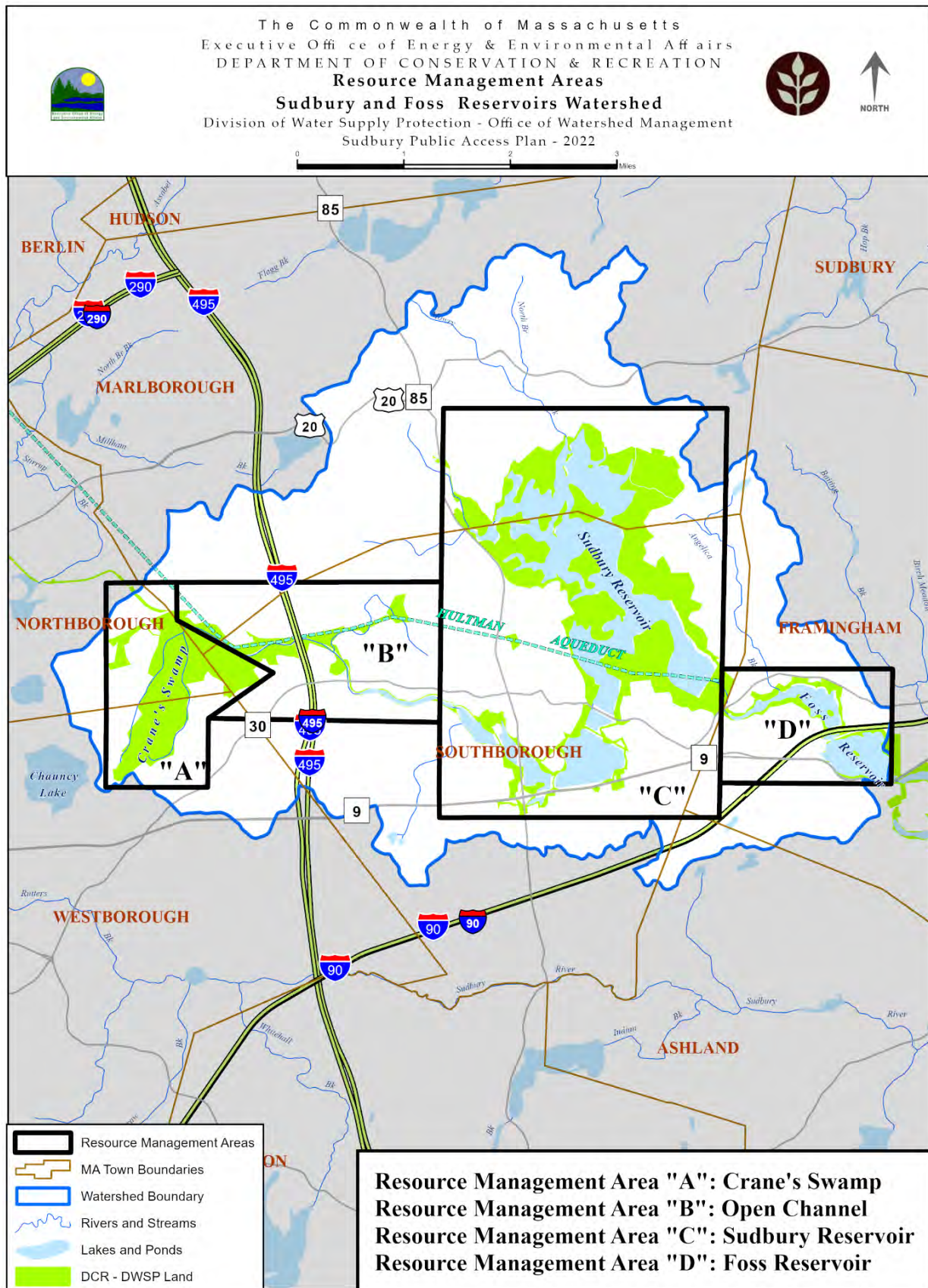
General Restrictions:

- ❑ General public access within the Sudbury and Foss Reservoirs Watershed System is restricted to one hour before sunrise to one hour after sunset through gates or designated (posted) areas only. Any activity which injures or defaces the property of the Commonwealth is strictly prohibited. This chart is based on the Watershed Protection Regulations 313 CMR 11.00. Littering is strictly prohibited. Carry in/Carry out. Do not feed wildlife. No dogs allowed.**

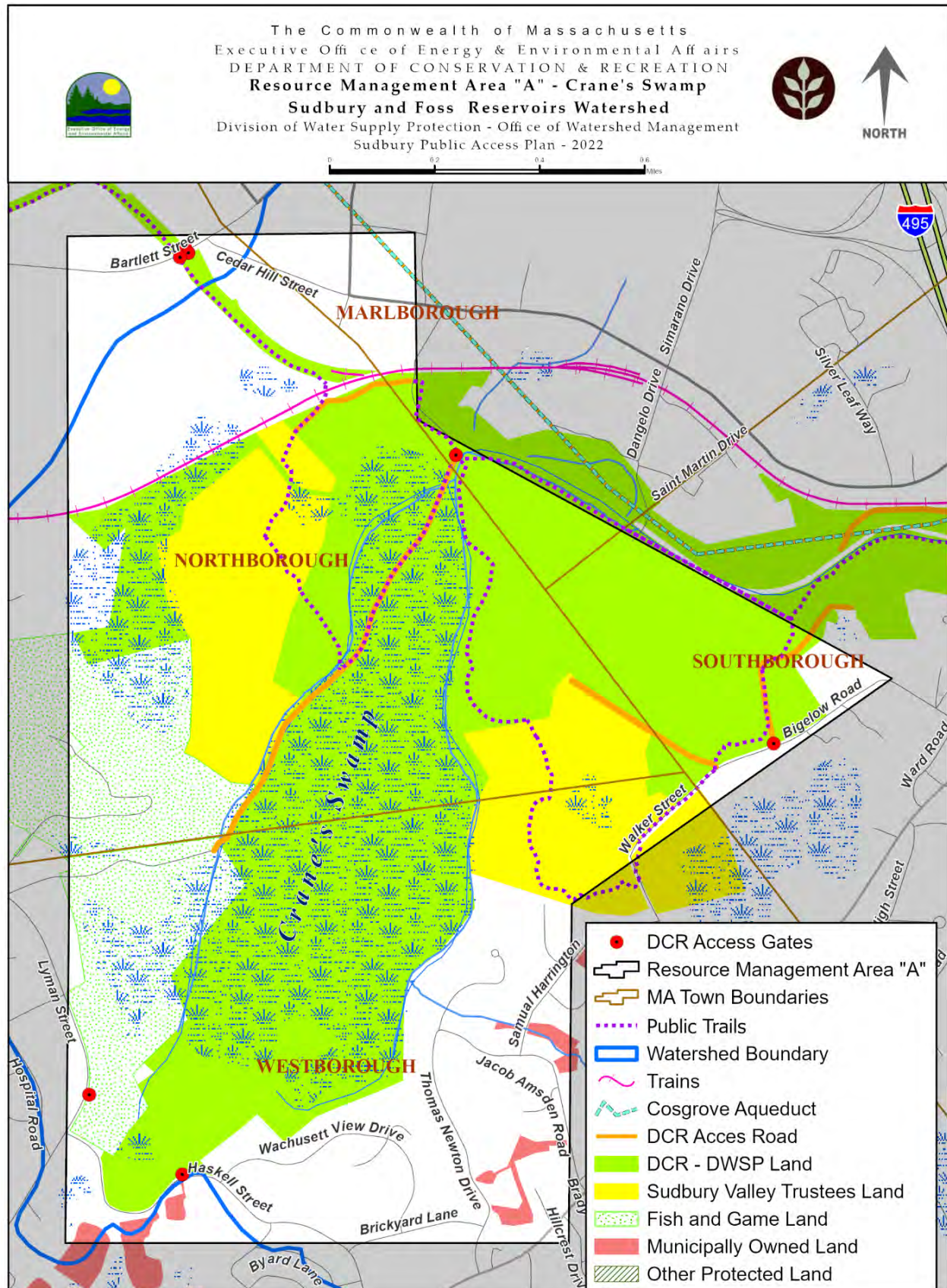
Specific Restrictions:

- ¹ The Boroughs Trail Loop and other public trails have been developed through an area within the Crane Swamp Public Access Management Area. Dogs and bicycles are not permitted on the sections of trail on DWSP land in this area.
- ² The Boroughs Trail Loop and other public trails have been developed along the Open Channel in the Open Channel Management Area. Dogs and bicycles are not permitted on the sections of trail on DWSP land in this area.
- ³ The Boroughs Trail Loop (Peninsula Trail) and other public trails have been developed in the Sudbury Reservoir Management Area. Dogs and bicycles are not permitted on the sections of trail on DWSP land in this area.
- ⁴ Prohibited except by written permission from DWSP.
- ⁵ Foraging is allowed only for the collection of edible plants, such as blueberries and mushrooms, in a non-disruptive manner and for non-commercial use.
- ⁶ Geocaching and Letterboxing are allowed provided DCR and DWSP guidelines are followed.
- ⁷ Allowed without a permit for groups of less than 25 individuals. Permit required for group of more than 25 people.
- ⁸ Hunting and trapping are allowed with a DCR Permit provided the activities are consistent with MassWildlife seasons and regulations. See www.mass.gov/info-details/sudbury-reservoir-watershed-deer-hunt for up-to-date information regarding permits.
- ⁹ Organized sports allowed at 911 Field through a lease with the Town of Southborough.
- ¹⁰ Takeoff or landing of Unmanned Aerial Vehicles from DWSP land prohibited except by written permission from DWSP. Underwater drones are prohibited.

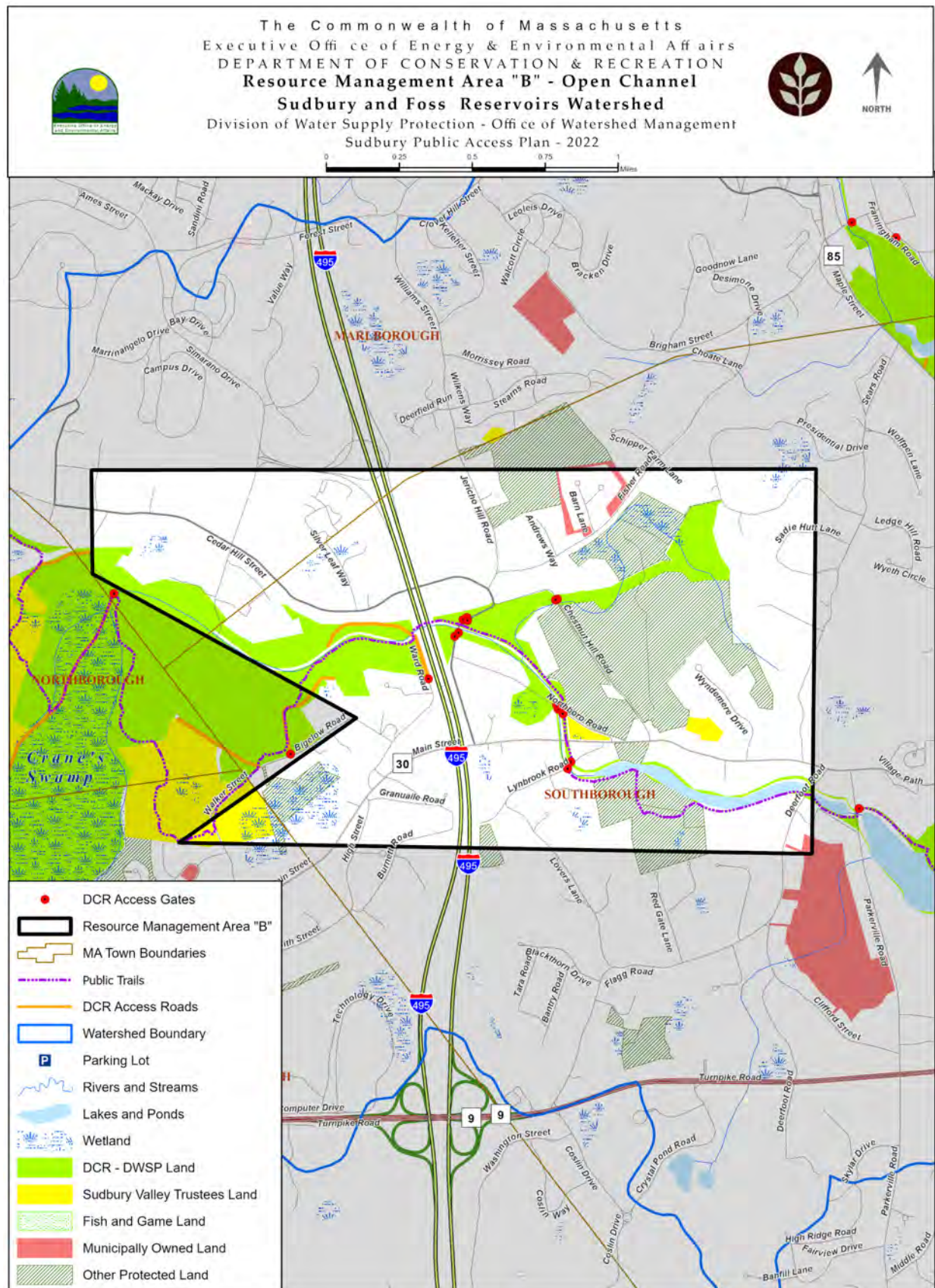
Map 3. Sudbury and Foss Reservoirs Resource Management Areas



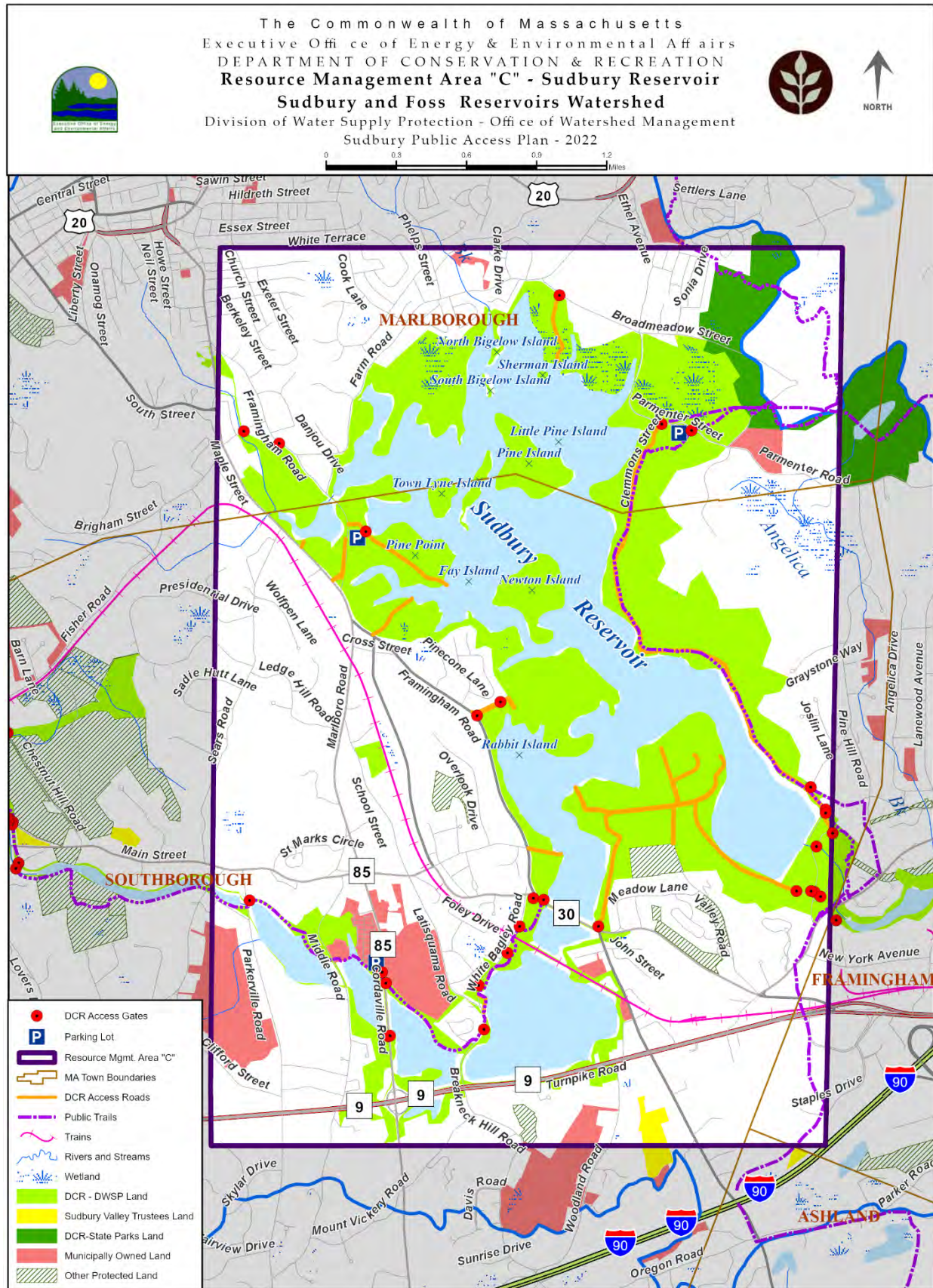
Map 4. Resource Management Area "A" – Crane Swamp



Map 5. Resource Management Area “B” – Open Channel



Map 6. Resource Management Area “C” – Sudbury Reservoir



Map 7. Resource Management Area “D” – Foss Reservoir

