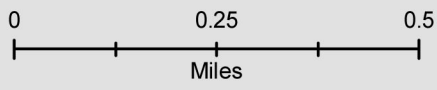


Shoreline Type

Ocean Aire Beach to Nameloc Heights

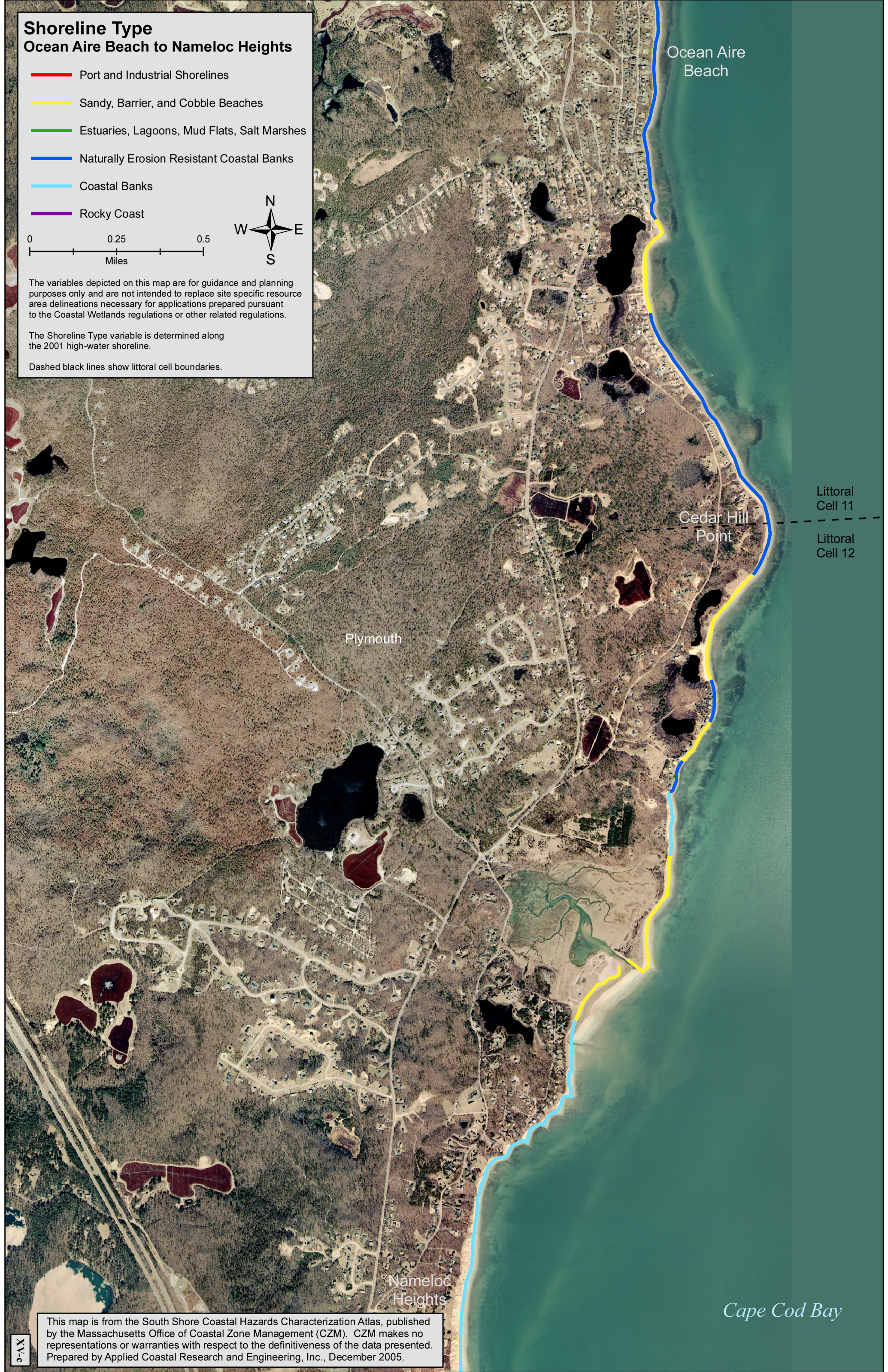
- Port and Industrial Shorelines
- Sandy, Barrier, and Cobble Beaches
- Estuaries, Lagoons, Mud Flats, Salt Marshes
- Naturally Erosion Resistant Coastal Banks
- Coastal Banks
- Rocky Coast



The variables depicted on this map are for guidance and planning purposes only and are not intended to replace site specific resource area delineations necessary for applications prepared pursuant to the Coastal Wetlands regulations or other related regulations.

The Shoreline Type variable is determined along the 2001 high-water shoreline.

Dashed black lines show littoral cell boundaries.



Ocean Aire Beach

Cedar Hill Point

Littoral Cell 11

Littoral Cell 12

Plymouth

Nameloc Heights

Cape Cod Bay

This map is from the South Shore Coastal Hazards Characterization Atlas, published by the Massachusetts Office of Coastal Zone Management (CZM). CZM makes no representations or warranties with respect to the definitiveness of the data presented. Prepared by Applied Coastal Research and Engineering, Inc., December 2005.